

2003 AUG 22 AM 9 05

CINDY MESSERSMITH  
 COUNTY RECORDER

TeKIPPE ENGINEERING, P.C., 128 South Vine Street, West Union, Iowa 52175 Phone (663) 422-6131

UNITED STATES PUBLIC LAND SURVEY CORNER CERTIFICATE

OF  
 Land Survey Monuments situated in Section 24, Township 94 North, Range  
11 West of the Fifth Principal Meridian, CHICKASAW County, Iowa.  
 Previously recorded in none in County Recorder's Office.  
(book, page, document number, etc.)

(Show reason for preparing this certificate, the evidence and detailed procedures used in establishing the corner positions and monumentation found or placed.)

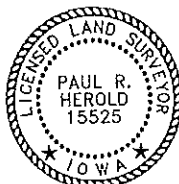
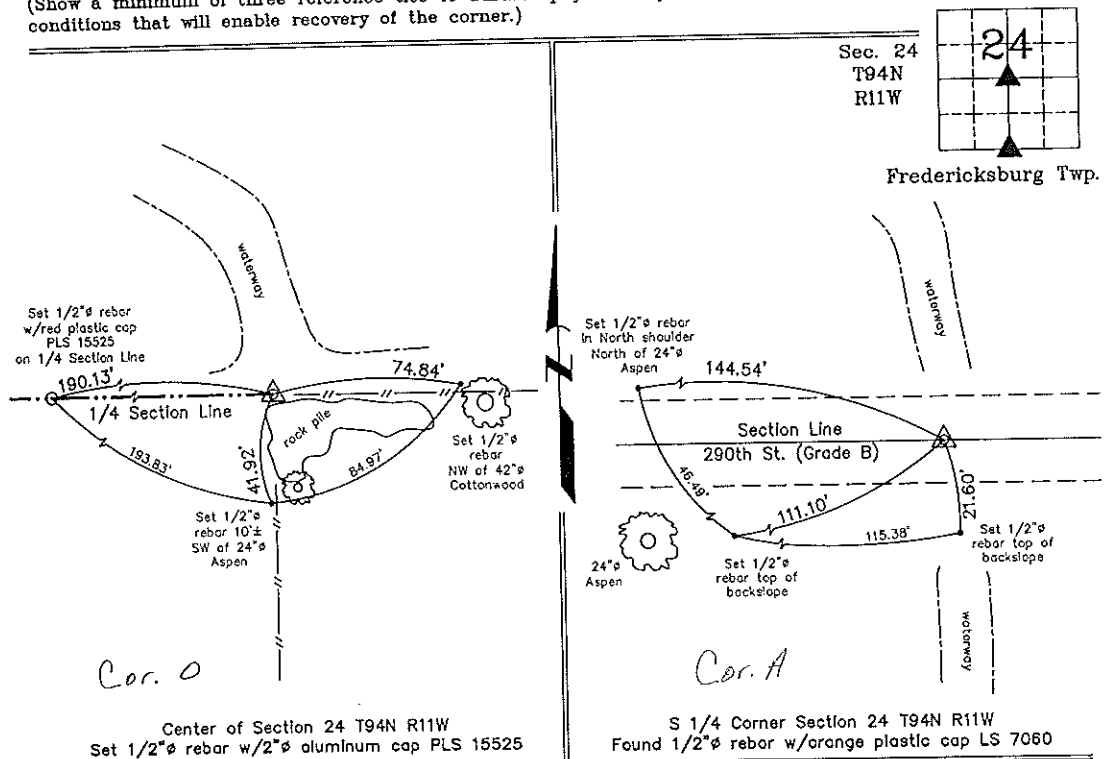
Monument Description and Remarks: **Center of Section 24 T94N R11W:** Set 1/2"  $\phi$  rebar w/2"  $\phi$  aluminum cap PLS 15525 at the intersection of the 1/4 Section Lines.

**S 1/4 Corner Section 24 T94N R11W:** Found 1/2"  $\phi$  rebar w/orange plastic cap LS 7060 with information obtained from a Survey and Plat made by Lyle G. TeKippe recorded in the Chickasaw County Recorder's Office August 30, 1989 in Deeds Book 143, Page 247.

PLAN - VIEW

Project Number 03157.LS  
 FB. 46K PG. 18-20

(Show a minimum of three reference ties to durable physical objects, relevant monuments and physical conditions that will enable recovery of the corner.)



I hereby certify that this land surveying document was prepared and the related survey work was performed by me or under my direct personal supervision and that I am a duly licensed Land Surveyor under the laws of the State of Iowa.

*Paul R. Herold* 8-21-03  
 Paul R. Herold Date  
 License number 15526  
 My license renewal date is December 31, 2004.  
 Sheets covered by this seal: Individual

List Corners to be Indexed			
Corners	Section	Twp.	Range
Center	24	94N	11W
S 1/4	24	94N	11W

Filed 9-18-03  
 X:\Section Corners\Sec. 24\24-94-11mw.dwg

County Engineer  
 Copy