

SHIMAK SURVEYING, P.L.L.C., 3212 335th Street, Cresco, Iowa 52136 Phone (563) 379-8899

UNITED STATES PUBLIC LAND SURVEY CORNER CERTIFICATE

OF

Land Survey Monuments situated in Section 26, Township 94 North, Range 11 West of the Fifth Principal Meridian, Chickasaw County, Iowa.

Previously recorded in 1.) 2011-1027 2.) Deed Bk. 186, Pg. 249 in County Recorder's Office.  
 (book, page, document number, etc.)

(Show reason for preparing this certificate, the evidence and detailed procedures used in establishing the corner positions and monumentation found or placed.)

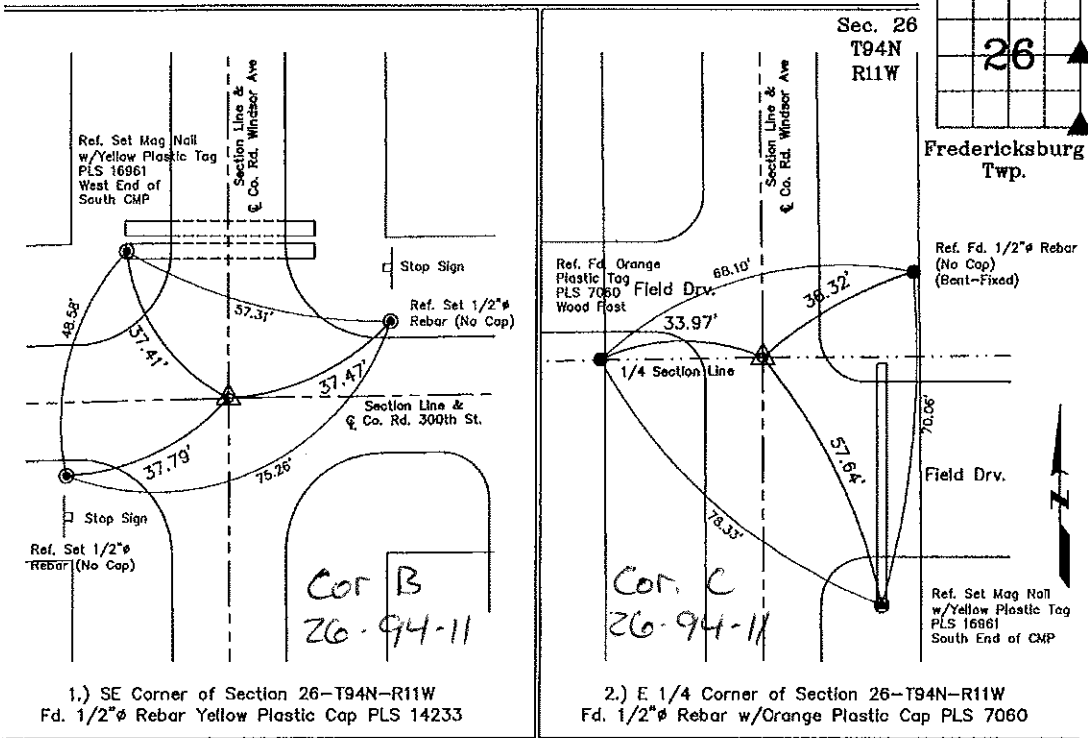
Monument Description and Remarks: 1.) **SE Corner of Section 26-T94N-R11W:**  
 Fd. 1/2"Ø Rebar. w/Yellow Plastic Cap PLS 14233. From Previous Section Corner Certificate.

One Tie is missing. Ties were Placed as Shown Below.

2.) **E 1/4 Corner of Section 26-T94N-R11W:**  
 Fd. 1/2"Ø Rebar w/Orange Plastic Cap PLS 7060. From Previous Section Corner Certificate.

All Ties are missing. Ties were Placed as Shown Below.

PLAN - VIEW



I hereby certify that this land surveying document was prepared and the related survey work was performed by me or under my direct personal supervision and that I am a duly licensed Land Surveyor under the laws of the State of Iowa.

*Michael J. Shimak* 5-31-2018  
 Michael J. Shimak Date:  
 License number 16961  
 My license renewal date is December 31, 2019.  
 Sheets covered by this seal: Sheet P1

| List Corners to be Indexed |         |      |       |
|----------------------------|---------|------|-------|
| Corners                    | Section | Twp. | Range |
| 1.) SE Corner              | 26      | 94N  | 11W   |
| 2.) E 1/4 Corner           | 26      | 94N  | 11W   |

Section 26-94-11  
As referred to in  
Engr. T.C. Book

TEKIPPE ENGINEERING, P.C., 128 South Vine Street, West Union, Iowa 52175 Phone (319) 422-5131

UNITED STATES PUBLIC LAND SURVEY CORNER CERTIFICATE

OF 26  
Land Survey Monuments situated in Section 25, Township 94 North, Range 11 West, of the Fifth Principal Meridian, CHICKASAW County, Iowa.  
Previously recorded in NONE in County Recorder's Office.

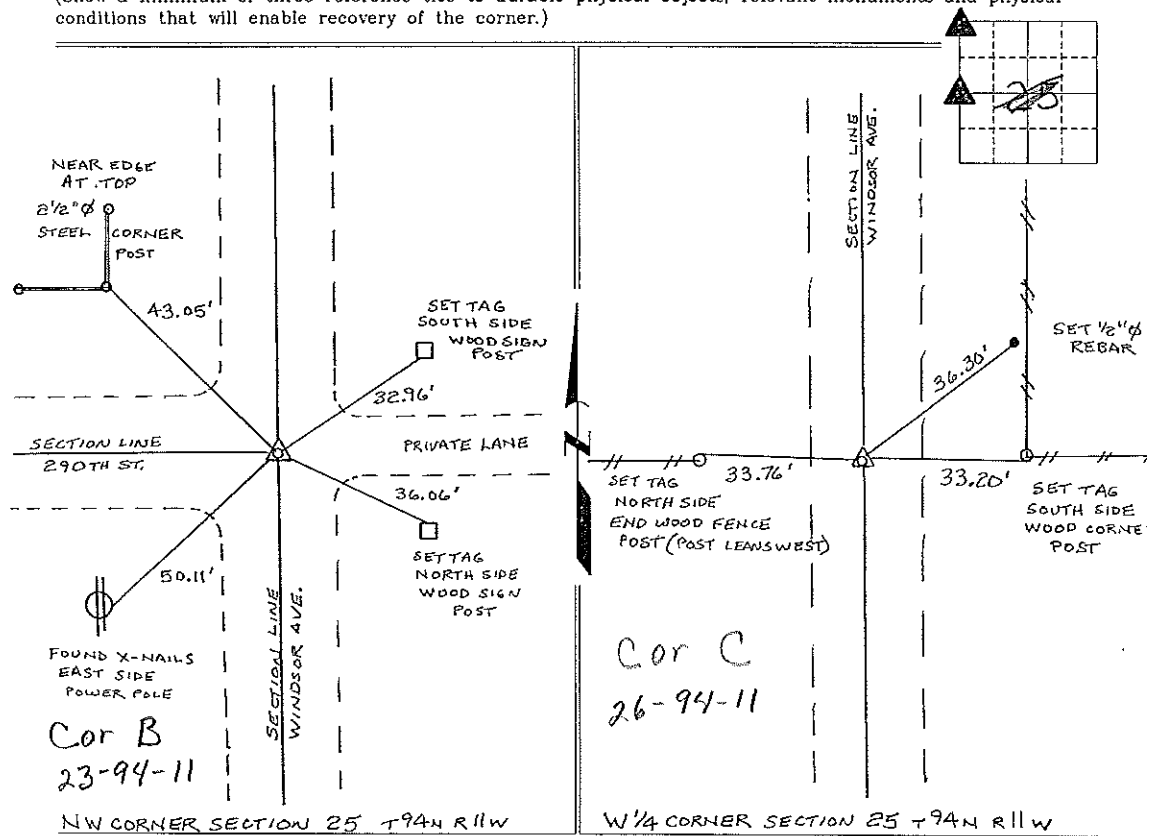
(book, page, document number, etc.)

(Show reason for preparing this certificate, the evidence and detailed procedures used in establishing the corner positions and monumentation found or placed.)

Monument Description and Remarks: NW CORNER SECTION 25 T94N R11W FOUND  
5/8" φ IRON PIN, AS SHOWN ON A SURVEY AND PLAT MADE BY LYLE G. TEKIPPE, RECORDED  
AUGUST 29, 1989, DEED BOOK 143, PAGES 246-247.  
W 1/4 CORNER SECTION 25 T94N R11W SET 1/2" φ REBAR W/CAP 7060, FROM INFORMATION  
OBTAINED FROM THE COUNTY ENGINEERS OFFICE, FIELD NOTES SHOW THAT A STONE WAS SET  
ON THE SPLIT OF THE FENCES, WE DUG BUT DID NOT FIND THE STONE, SET 1/2" φ REBAR  
W/CAP 7060 ON THE SPLIT OF THE LINE FENCES EAST AND WEST

PLAN - VIEW

(Show a minimum of three reference ties to durable physical objects, relevant monuments and physical conditions that will enable recovery of the corner.)



I hereby certify that this land surveying document was prepared and the related survey work was performed by me or under my direct personal supervision and that I am a duly licensed Land Surveyor under the laws of the State of Iowa.

*Lyle G. Tekippe* 12-18-97  
Lyle G. Tekippe Date  
License number 7060  
My license renewal date is December 31, 1998.  
Sheets covered by this seal Individual



List Corners to be Indexed

| Corners  | Section  | Twp. | Range |
|----------|----------|------|-------|
| NW       | 25       | 94N  | 11W   |
| W 1/4    | 25       | 94N  | 11W   |
| Corner C | 26-94-11 |      |       |