

UNITED STATES PUBLIC LAND SURVEY CORNER CERTIFICATE

OF

Land Survey Monuments situated in Section 26, Township 94 North, Range 11 West of the Fifth Principal Meridian, CHICKASAW County, Iowa. Previously recorded in none in County Recorder's Office. (book, page, document number, etc.)

(Show reason for preparing this certificate, the evidence and detailed procedures used in establishing the corner positions and monumentation found or placed.)

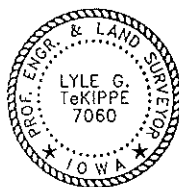
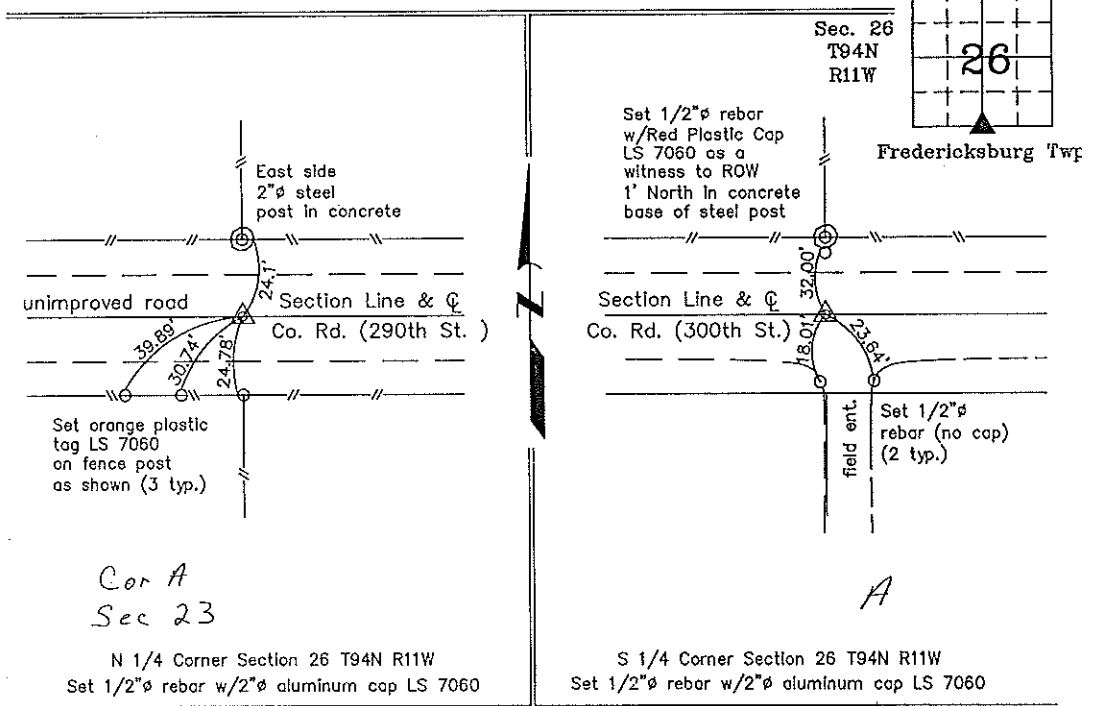
Monument Description and Remarks: N 1/4 Corner Section 26 T94N R11W: Set 1/2"Ø rebar w/2"Ø aluminum cap LS 7060 on the split of the R.O.W. on a line between the end posts of 1/4 Section Line fences as indicated in Chickasaw County ties obtained from the Chickasaw County Engineer's Office in the Field Book Fredericksburg Township, Corner A, Section 23.

S 1/4 Corner Section 26 T94N R11W: Set 1/2"Ø rebar w/2"Ø aluminum cap LS 7060 33.00' South of the North R.O.W. on the extension of a line from the N 1/4 Corner through a 1/4 Section Line fence.

PLAN - VIEW

Project Number 01045.LS
FR. 461 PG. 18-19

(Show a minimum of three reference ties to durable physical objects, relevant monuments and physical conditions that will enable recovery of the corner.)



I hereby certify that this land surveying document was prepared and the related survey work was performed by me or under my direct personal supervision and that I am a duly licensed Land Surveyor under the laws of the State of Iowa.

Lyle G. TeKippe 4-17-01
Lyle G. TeKippe Date
License number 7080
My license renewal date is December 31, 2002.
Sheets covered by this seal: Individual

List Corners to be Indexed			
Corners	Section	Twp.	Range
N 1/4	26	94N	11W
S 1/4	26	94N	11W

Entered 1-16-01