

Section 26-94-11
As referred to in
Engr. T.C. Book

TEKIPPE ENGINEERING, P.C., 128 South Vine Street, West Union, Iowa 52175 Phone (319) 422-5131

UNITED STATES PUBLIC LAND SURVEY CORNER CERTIFICATE

OF 26
Land Survey Monuments situated in Section 25, Township 94 North, Range 11 West, of the Fifth Principal Meridian, CHICKASAW County, Iowa.
Previously recorded in NONE in County Recorder's Office.

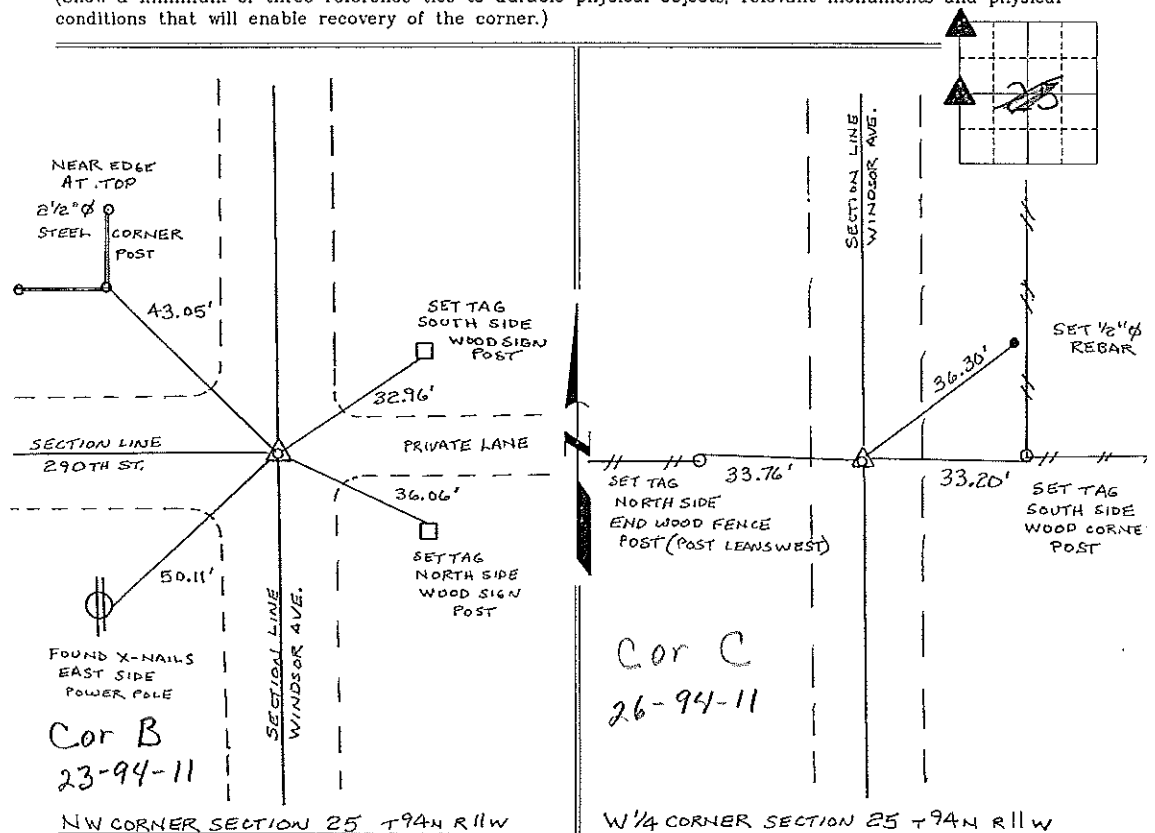
(book, page, document number, etc.)

(Show reason for preparing this certificate, the evidence and detailed procedures used in establishing the corner positions and monumentation found or placed.)

Monument Description and Remarks: NW CORNER SECTION 25 T94N R11W: FOUND
5/8" φ IRON PIN, AS SHOWN ON A SURVEY AND PLAT MADE BY LYLE G. TEKIPPE, RECORDED
AUGUST 29, 1989, DEED BOOK 143, PAGES 246-247.
W 1/4 CORNER SECTION 25 T94N R11W: SET 1/2" φ REBAR 1/4 CAP 7060, FROM INFORMATION
OBTAINED FROM THE COUNTY ENGINEERS OFFICE, FIELD NOTES SHOW THAT A STONE WAS SET
ON THE SPLIT OF THE FENCES, WE DUG BUT DID NOT FIND THE STONE, SET 1/2" φ REBAR
1/4 CAP 7060 ON THE SPLIT OF THE LINE FENCES EAST AND WEST

PLAN - VIEW

(Show a minimum of three reference ties to durable physical objects, relevant monuments and physical conditions that will enable recovery of the corner.)



I hereby certify that this land surveying document was prepared and the related survey work was performed by me or under my direct personal supervision and that I am a duly licensed Land Surveyor under the laws of the State of Iowa.

Lyle G. Tekippe 12-18-97
Lyle G. Tekippe Date
License number 7080
My license renewal date is December 31, 1998.
Sheets covered by this seal Individual



List Corners to be Indexed

Corners	Section	Twp.	Range
NW	25	94N	11W
W 1/4	25	94N	11W
Corner B	23-94-11		
Corner C	26-94-11		