



SHIMAK SURVEYING, P.L.L.C., 3212 335th Street, Cresco, Iowa 52138 Phone (683) 379-8899

UNITED STATES PUBLIC LAND SURVEY CORNER CERTIFICATE

OF 27

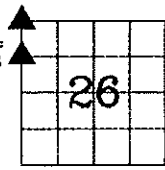
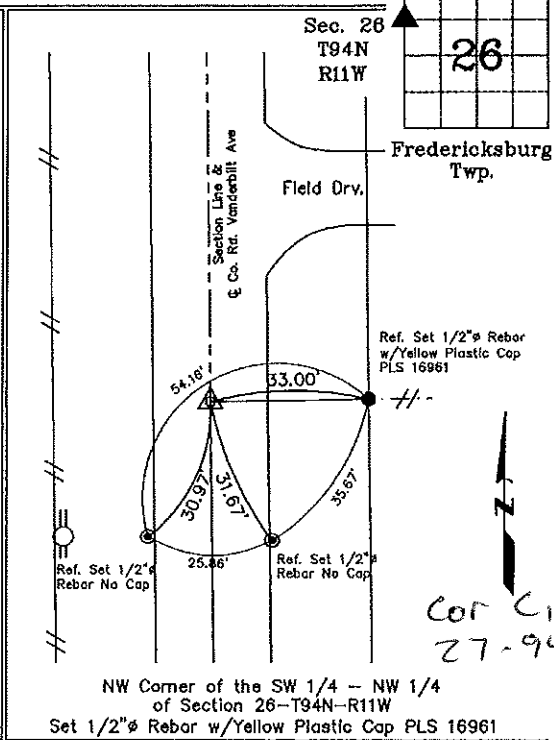
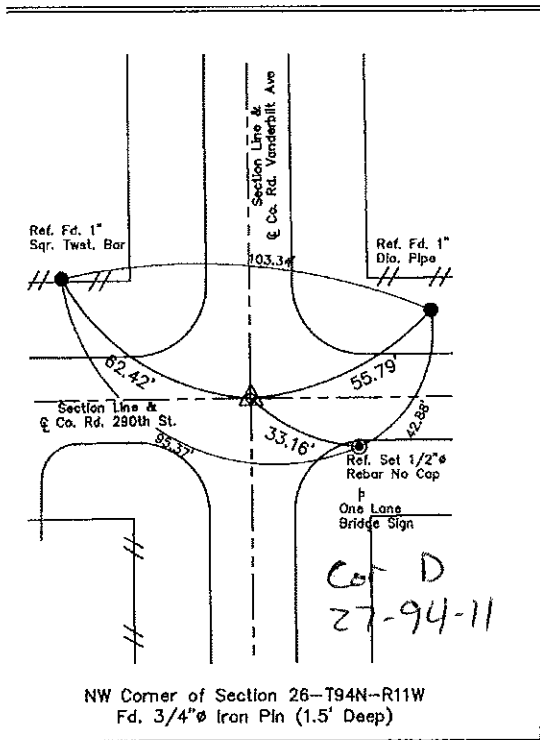
Land Survey Monuments situated in Section 26, Township 94 North, Range 11 West of the Fifth Principal Meridian, Chickasaw County, Iowa.
 Previously recorded in 1.) Fee Bk. 2011-0642 2.) None in County Recorder's Office.
 (book, page, document number, etc.)

(Show reason for preparing this certificate, the evidence and detailed procedures used in establishing the corner positions and monumentation found or placed.)

Monument Description and Remarks: 1.) NW Corner of Section 26-T94N-R11W:
Fd. 3/4"Ø Iron Pin. 1.5' Deep from Previous Section Corner Certificate.
One Tie is missing. Ties were Placed as Shown Below.

2.) NW Corner of the SW1/4-NW1/4 of Section 26-T94N-R11W:
Set 1/2"Ø Rebar w/Yellow Plastic Cap PLS 16961 at the intersection of the West Section Line and an existing East-West Fence after comparing to Warranty Deed and occupation lines.
One Tie is missing. Ties were Placed as Shown Below.

PLAN - VIEW



I hereby certify that this land surveying document was prepared and the related survey work was performed by me or under my direct personal supervision and that I am a duly licensed Land Surveyor under the laws of the State of Iowa.
Michael J. Shimok 5-21-2018
 Michael J. Shimok Date:
 License number 16961
 My license renewal date is December 31, 2019.
 Sheets covered by this seal: Sheet P1

List Corners to be Indexed			
Corners	Section	Twp.	Range
NW Corner	26	94N	11W
NW-SW-NW Cor.	26	94N	11W