



SHIMAK SURVEYING, P.L.L.C., 3212 335th Street, Cresco, Iowa 52136 Phone (563) 379-8899

UNITED STATES PUBLIC LAND SURVEY CORNER CERTIFICATE

OF

Land Survey Monuments situated in Section 26, Township 94 North, Range 11 West of the Fifth Principal Meridian, Chickasaw County, Iowa.

Previously recorded in 1.) Fee Bk. 2010-1490 2.) None in County Recorder's Office.
 (book, page, document number, etc.)

(Show reason for preparing this certificate, the evidence and detailed procedures used in establishing the corner positions and monumentation found or placed.)

Monument Description and Remarks: 1.) SW Corner of Section 26-T94N-R11W:
Fd. 1/2"Ø Rebar. w/Red Plastic Sleeve. The 2"Ø Alum. Cap is missing. From Previous Section Corner Certificate.

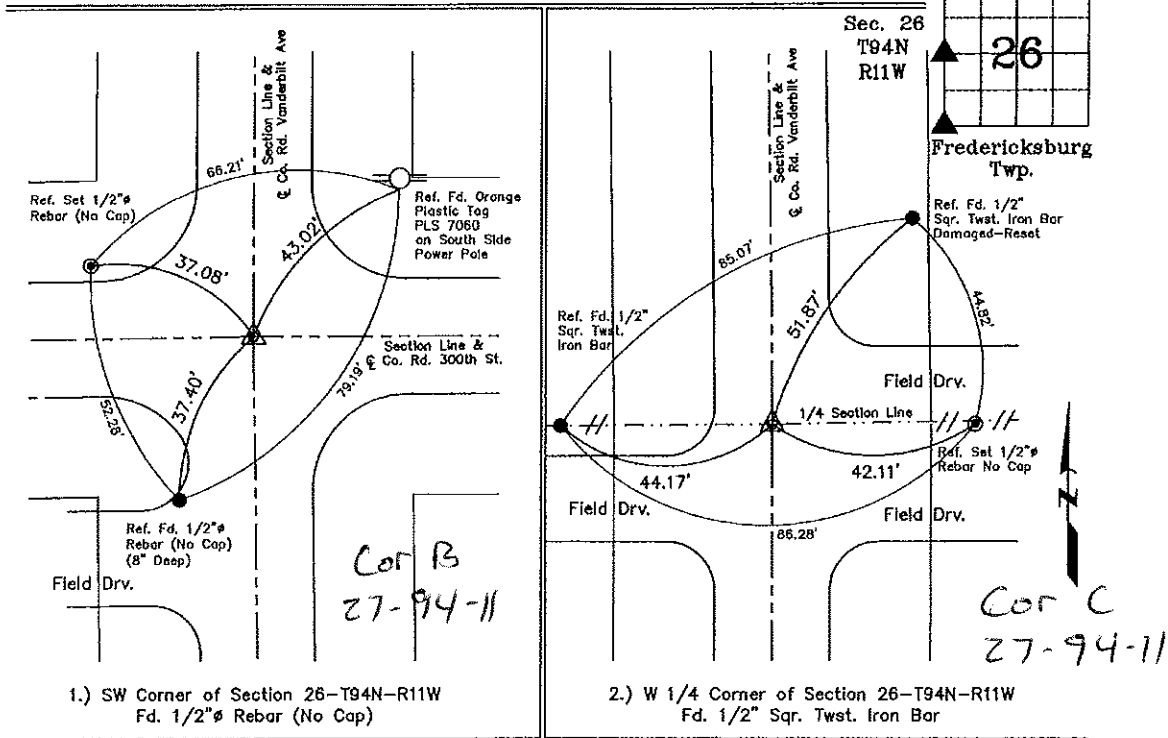
One Tie is missing. Ties were Placed as Shown Below.

2.) W 1/4 Corner of Section 26-T94N-R11W:

Fd. 1/2" Sqr. Twst. Iron Bar from County Engineer's Notes.

One Tie is missing. Ties were Placed as Shown Below.

PLAN - VIEW



1.) SW Corner of Section 26-T94N-R11W
 Fd. 1/2"Ø Rebar (No Cap)

2.) W 1/4 Corner of Section 26-T94N-R11W
 Fd. 1/2" Sqr. Twst. Iron Bar



I hereby certify that this land surveying document was prepared and the related survey work was performed by me or under my direct personal supervision and that I am a duly licensed Land Surveyor under the laws of the State of Iowa.

Michael J. Shimak 5-31-2018
 Michael J. Shimak Date:

License number 16961
 My license renewal date is December 31, 2019.
 Sheets covered by this seal: Sheet P1

List Corners to be Indexed

Corners	Section	Twp.	Range
1.) SW Corner	26	94N	11W
2.) W 1/4 Corner	26	94N	11W

Project Number: 18-07-18.1S
 FB. Howard/Chickasaw No. 1, Fgs. 5-10