

Section 20-94-11  
 As referred to in  
 Engr. Tie Book

FILED 2001-1797  
 RECORDER'S OFFICE  
 CHICKASAW COUNTY, IOWA  
 2001 AUG 21 AM 10 53  
 CINDY MESSERSMITH  
 COUNTY RECORDER

TeKIPPE ENGINEERING, P.C., 128 South Vine Street, West Union, Iowa 52176 Phone (563) 422-5131

UNITED STATES PUBLIC LAND SURVEY CORNER CERTIFICATE

OF <sup>20</sup>  
 Land Survey Monuments situated in Section 21, Township 94 North, Range  
11 West of the Fifth Principal Meridian, CHICKASAW County, Iowa.  
 Previously recorded in none in County Recorder's Office.  
(book, page, document number, etc.)

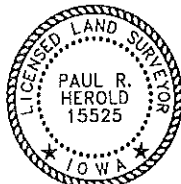
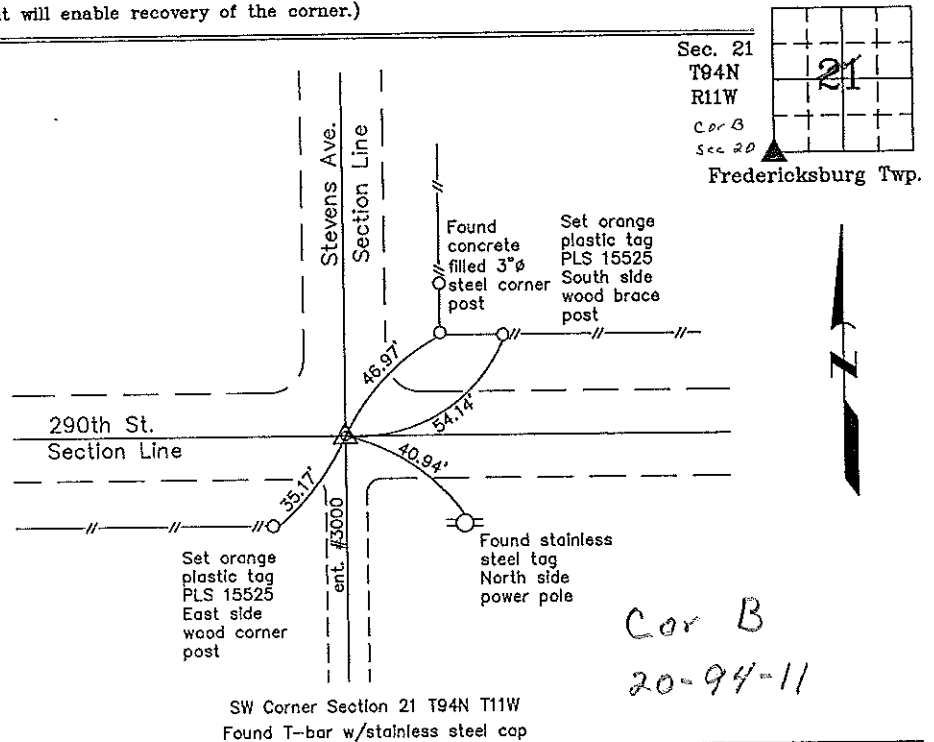
(Show reason for preparing this certificate, the evidence and detailed procedures used in establishing the corner positions and monumentation found or placed.)

Monument Description and Remarks: SW Corner Section 21 T94N R11W: Found T-bar w/stainless steel cap with information obtained from the Chickasaw County Engineer's Office in the Field Book Fredericksburg Twp. Corner Ties, Section 20, Corner B.

PLAN - VIEW

Project Number 0112115  
 FR. NRCS 2 PG. 4-8

(Show a minimum of three reference ties to durable physical objects, relevant monuments and physical conditions that will enable recovery of the corner.)



I hereby certify that this land surveying document was prepared and the related survey work was performed by me or under my direct personal supervision and that I am a duly licensed Land Surveyor under the laws of the State of Iowa.  
*Paul R. Herold* 8-20-01  
 Paul R. Herold Date  
 License number 15525  
 My license renewal date is December 31, 2002.  
 Sheets covered by this seal: Individual

List Corners to be Indexed			
Corners	Section	Twp.	Range
SW	21	94	11

Filed 10-10-01

County Engineers  
 Copy