

CINDY MESSERSMITH
 COUNTY RECORDER

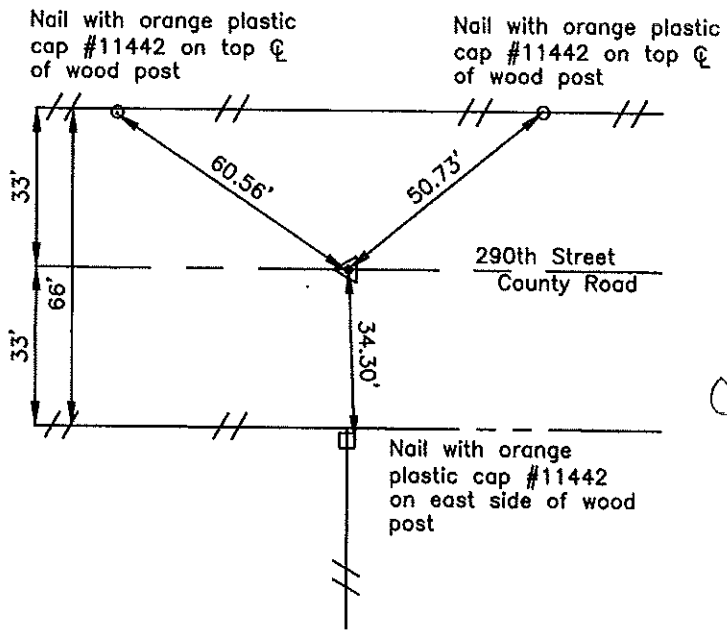
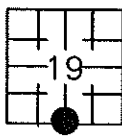
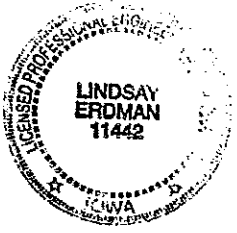
Prepared by: Erdman Engineering, P.C. 708 Commerce Drive, P.O. Box 246 Decorah, Iowa 52101,(563)382-4194

United States Public Land Survey Corner Certificate
 of

Land Survey Monuments situated in Section 19, Township 94, Range 11 West of
 the 5th Principal Meridian in Chickasaw County, Iowa. Previously recorded in
does not apply in the county Recorder's Office.

Monument Description and Remarks: This certificate is prepared in accordance with
 Section 193C of the Code of Iowa. No previous certificate has been filed for this
 corner location. Based on Chickasaw County Engineer's Reference ties we searched for
 the tie markers previously set. We did not find the ties as they appear to have been
 removed. We searched an area $\pm 25'$ north-south X $\pm 20'$ east-west with a magnetic
 locator, for the iron pin set previously. We did not find the iron pin as it appears to
 have been graded out. Based on this we set a $\frac{1}{2}$ " diameter steel bar with $1 \frac{1}{2}$ "
 aluminum cap #11442, at the center of the 66' wide county road right-of-way and in
 line with the fence line running south, as the S $\frac{1}{4}$ Corner of Section 19, Township 94
 North, Range 11 West.

Plan-View



Cor A

I hereby certify that the survey work was completed
 and this certificate was prepared by me or under my
 direct supervision and that I am a duly registered
 land surveyor under the laws of the State of Iowa.

Signature Lindsay Erdman
 Lindsay Erdman, P.E. and L.S.
 Date: 2/4/03 Reg. No. 11442

My license renewal date is December 31, 2004

Corner(s) to be Indexed

Corner	Section	Township	Range
S 1/4	19	94	11