



Prepared by & Return to Herold - Reicks Surveying, 10 East Main Street, New Hampton, IA 50659, Ph. 641-394-2725

United States Public Land Survey Corner Certificate

Land Survey Monument situated in
 Section 19, Township 94 North, Range 11 West of the Fifth Principal Meridian, Chickasaw County, Iowa.
 Not on file in the County Recorder's office.

This certificate is being prepared in compliance with Iowa Code Chapter 355.11 because:



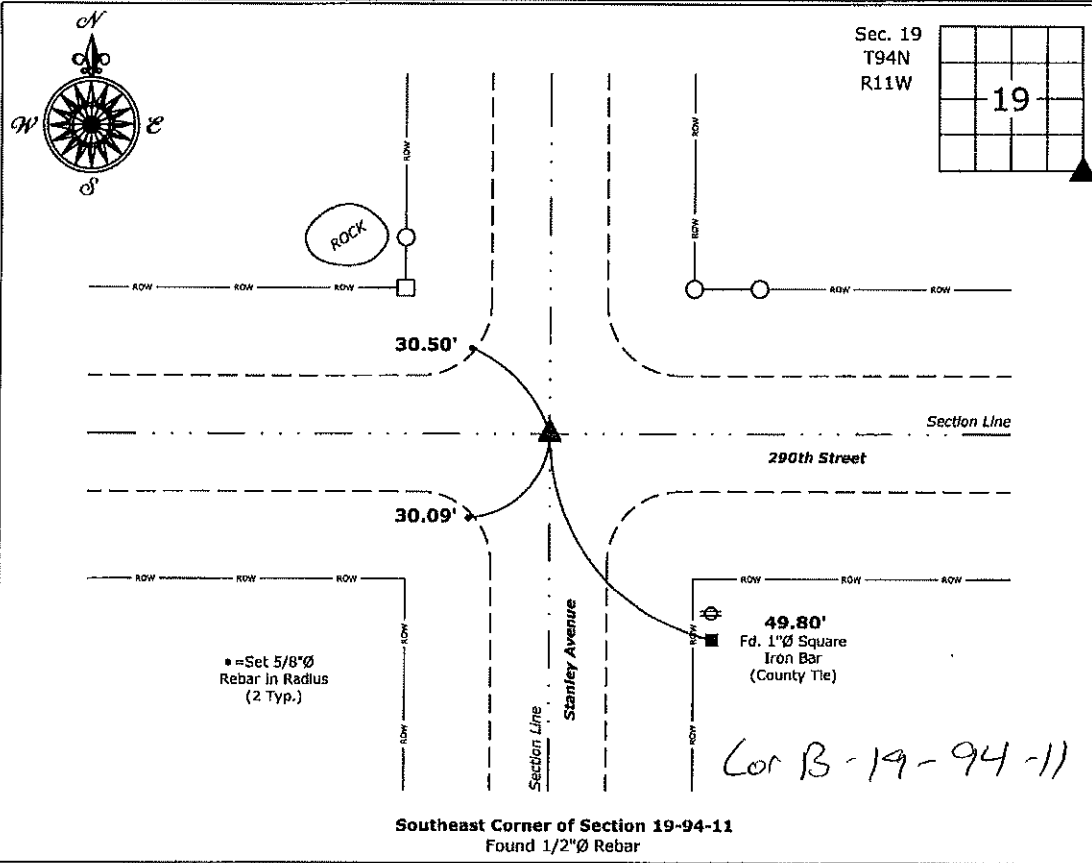
- There is no certificate on file for this corner.
- There are no longer three valid ties of record.
- There are changes to reference ties of record.
- There is change of monumentation of record.
- To clarify description of record monument (ties).

Monument Description and Remarks:

Southeast Corner: Found 1/2"Ø Rebar with information obtained from the County Engineer's Office in Field Book Fredericksburg Township Corner Ties, Section 19, Corner "B".

Plan View

(Show a minimum of three reference ties to durable physical objects, relevant monuments and physical conditions that will enable recovery of the corner.)



I hereby certify that this land surveying document was prepared and the related survey work was performed by me or under my direct personal supervision and that I am a duly licensed Land Surveyor under the laws of the State of Iowa.

Kirk D. Reicks 5-26-2020
 Kirk D. Reicks Date:
 License number 19211
 My license renewal date is December 31, 2020.
 Sheets covered by this seal: Individual sheet only

List Corner to be Indexed			
Corner	Section	Twp.	Range
SE	19	94	11
Project Number: 2020-038			
FB: Chickasaw 10, Pgs. 22-23			

File: S:\Projects - NHO\County Control Systems - NHO\CHICKASAW\CHICK-51\CHICK-51 - 2020.dwg, 5/26/2020 7:25:33 AM