

Instr. Number: E13-0123
 Recorded: 6/14/2013 at 2:37:00.0 PM
 Fee Amount: \$7.00
 Revenue Tax:
 Cindy Messersmith RECORDER
 Chickasaw County, Iowa

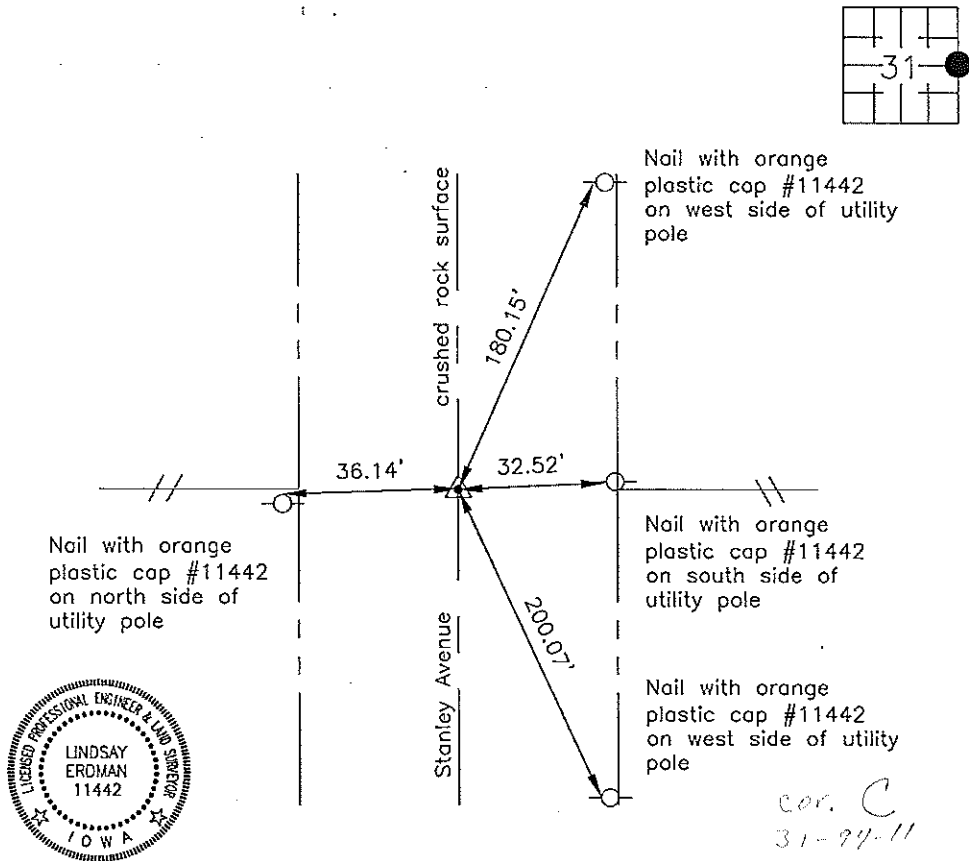
Prepared by: Erdman Engineering, P.C., 708 Commerce Drive, P.O. Box 246, Decorah, Iowa 52101 (563) 382-4194

United States Public Land Survey Corner Certificate

of
 Land Survey Monuments situated in Section 31, Township 94, Range 11 West of
 the 5th Principal Meridian in Chickasaw County, Iowa. Previously recorded in
does not apply in the county Recorder's Office.

Monument Description and Remarks: This certificate is prepared in accordance with
 Section 355.11 of the Code of Iowa. No previous certificate has been filed for this
 corner location. E 1/4 Corner: Chickasaw County Engineer's Reference Ties show that a
 stone and brick were found in 1952. No other reference is made to the E 1/4 Corner.
 We found a 5/8" diameter steel bar down ±1.5' below the existing crushed rock surface
 at the approximate centerline of the county road and in line with the fence lines
 running east and west. We used the steel bar as the E 1/4 Corner of Section 31,
 Township 94 North, Range 11 West and set a 1/2" diameter steel bar with 1 1/2" diameter
 aluminum cap #11442 over top of the monument.

Plan-View



I hereby certify that this land surveying document was prepared and the related survey work was performed by me or under my direct personal supervision and that I am a duly licensed Land Surveyor under the laws of the State of Iowa.

Signature Lindsay Erdman
 Lindsay Erdman, P.E. and P.L.S. Iowa License Number 11442

Date: 6/12/13

My license renewal date is December 31, 2014

Corner(s) to be Indexed

Corner	Section	Township	Range
E 1/4	31	94	11