

Instr. Number: 2021-2888  
 Recorded: 12/27/2021 at 3:35:47.0 PM  
 Pages 1  
 County Recording Fee: \$7.00  
 Iowa E-Filing Fee: \$3.00  
 Combined Fee: \$10.00  
 Revenue Tax:  
 Shirley Troyna RECORDER  
 Chickasaw County, Iowa

Prepared by & Return to: Herald - Reicks Surveying, 2206 East Bremer Avenue, Waverly, IA 50677, Ph. 319-483-5107

### United States Public Land Survey Corner Certificate

Land Survey Monument situated in  
 Section 31, Township 94 North, Range 11 West of the Fifth Principal Meridian, Chickasaw County, Iowa.  
 Not on file in the County Recorder's office.

This certificate is being prepared in compliance with Iowa Code Chapter 355.11 because:

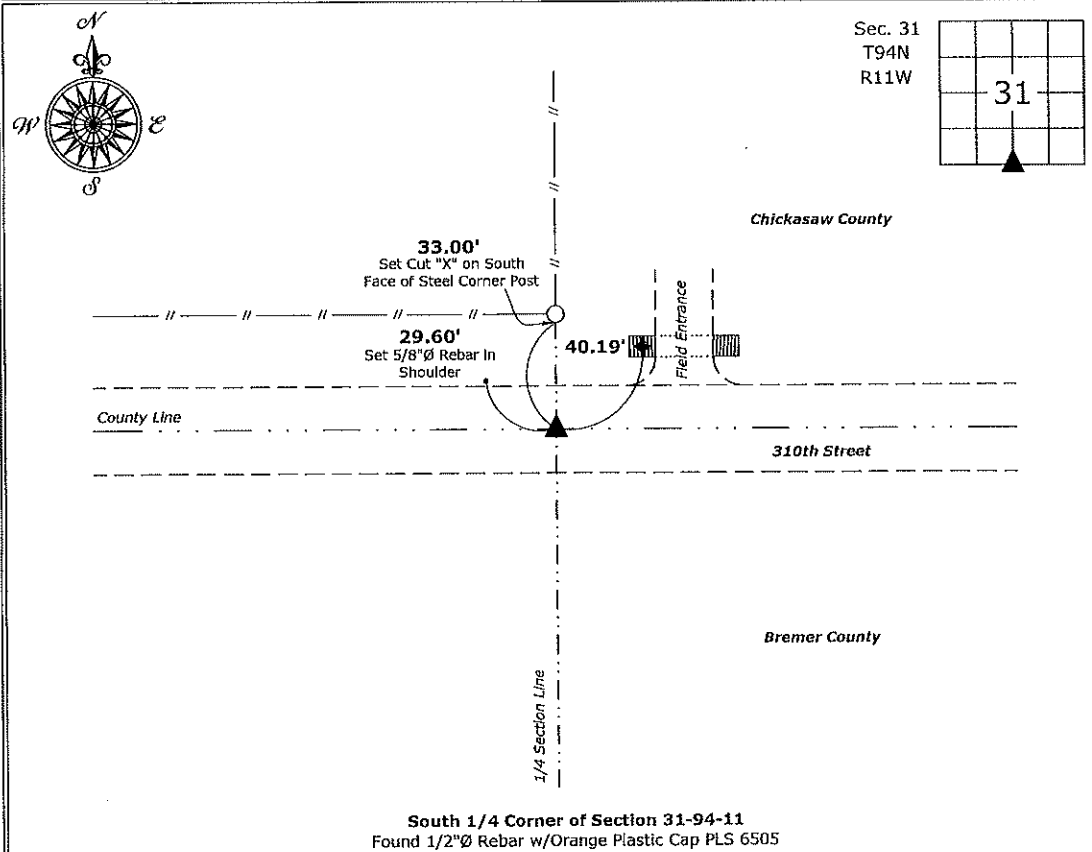
- There is no certificate on file for this corner.
- There are no longer three valid ties of record.
- There are changes to reference ties of record.
- There is change of monumentation of record.
- To clarify description of record monument (ties).

**Monument Description and Remarks:**

**North 1/4 Corner:** Found 1/2"Ø Rebar w/Orange Plastic Cap PLS 6505 with information obtained from the previously recorded Section Corner Certificate, as recorded in Document #1994-1302, on file in the Bremer County Recorder's Office, Waverly Iowa.

### Plan View

(Show a minimum of three reference ties to durable physical objects, relevant monuments and physical conditions that will enable recovery of the corner.)



Cor A  
 31-94-11

**South 1/4 Corner of Section 31-94-11**  
 Found 1/2"Ø Rebar w/Orange Plastic Cap PLS 6505



I hereby certify that this land surveying document was prepared and the related survey work was performed by me or under my direct personal supervision and that I am a duly licensed Land Surveyor under the laws of the State of Iowa.

*Isaiah M. Reicks 12-21-21*  
 Isaiah M. Reicks Date:  
 License number 22468  
 My license renewal date is December 31, 2023.  
 Sheets covered by this seal: Individual sheet only

List Corner to be Indexed			
Corner	Section	Twp.	Range
S 1/4	31	94	11

Project Number: 2021-577  
 FB: Bremer 16, Pgs. 30

File: I:\Projects - WO\County Control Systems\WO\BREMER\BREMER-4\BREMER-4.dwg, 12/21/2021 12:11:40 PM