

Section 30-94-11
 As referred to in
 Engr. Tie Book

Prepared by: Erdman Engineering, P.C. 708 Commerce Drive, P.O. Box 246, Decorah, Iowa 52101
 Phone (319)382-4194, Fax (319)382-3623

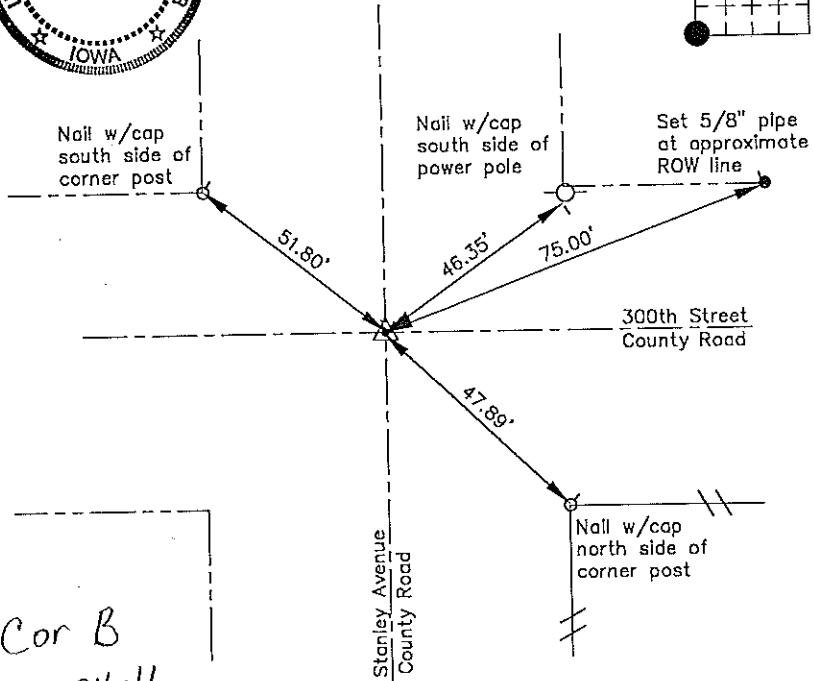
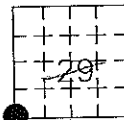
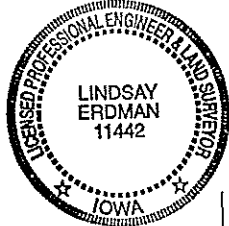
United States Public Land Survey Corner Certificate

30 of

Land Survey Monuments situated in Section 29 Township, 94 Range, 11 of the Fifth Principle Meridian,
 Chickasaw County, Iowa. Previously recorded in does not apply in County Records Office.

Monument Description and Remarks: This certificate is prepared in accordance with Section 355.11
 of the 1995 Code of Iowa. No previous certificate has been filed for this corner location. Based on
 Chickasaw County Engineer's Reference Ties we found a corner post that had been used previously
 as a tie marker. From this remaining tie we found a 5/8" bar at the approximate centerline
 centerline intersection of the county road that matches the description of the monument previously
 used at the SW Corner of Section 29, Township 94 North, Range 11 West.

Plan-View



Cor B
 30-94-11

I hereby certify that the survey work was completed
 and this certificate was prepared by me or under my
 direct supervision and that I am a duly registered
 land surveyor under the laws of the State of Iowa.

Signature Lindsay Erdman
 Lindsay Erdman, P.E. and L.S.
 Date: 12/22/99 Reg. No. 11442

My license renewal date is December 31, 2000

Corners	Section	Twp.	Range
SW	29	94	11