

Prepared by & Return to: Herold - Reicks Surveying, 10 East Main Street, New Hampton, IA 50659, Ph. 641-394-2725

UNITED STATES PUBLIC LAND SURVEY CORNER CERTIFICATE

Land Survey Monuments situated in Section 33, Township 94 North, Range 11 West of the Fifth Principal Meridian, Chickasaw County, Iowa. Not previously recorded in the County Recorder's office.

This certificate is being prepared in compliance with Iowa Code Chapter 355.11 because:

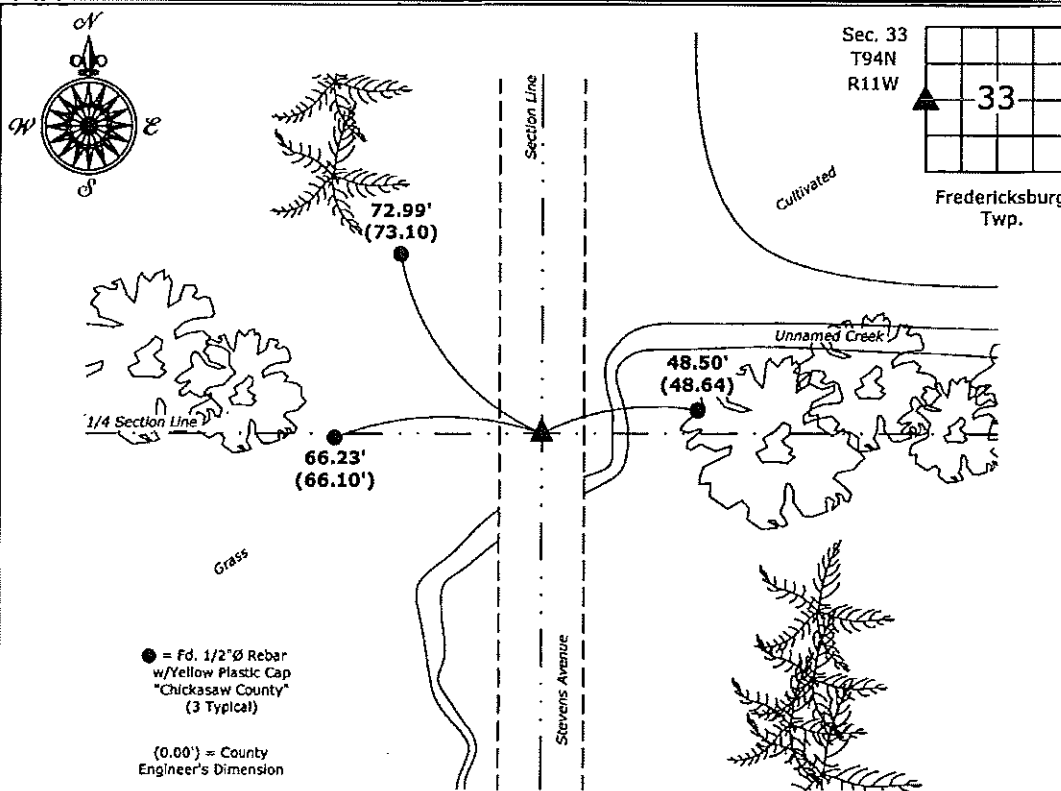
- There is no certificate on file for this corner.
- There are no longer three valid ties of record.
- There are changes to reference ties of record.
- There is change of monumentation of record.
- To clarify description of record monument (ties).

Monument Description and Remarks:

West 1/4 Corner: Fd. 1/2"Ø rebar w/Yellow Plastic Cap "Chickasaw County" at the Centerline of Stevens Avenue Right-of-Way with information obtained from the County Engineer's office. Excavation of the site produced several native stones, accepted the rebar with cap as the true corner.

PLAN - VIEW

(Show a minimum of three reference ties to durable physical objects, relevant monuments and physical conditions that will enable recovery of the corner.)



West 1/4 Corner Section 33-94-11
 Fd. 1/2"Ø rebar w/Yellow Plastic Cap "Chickasaw County"



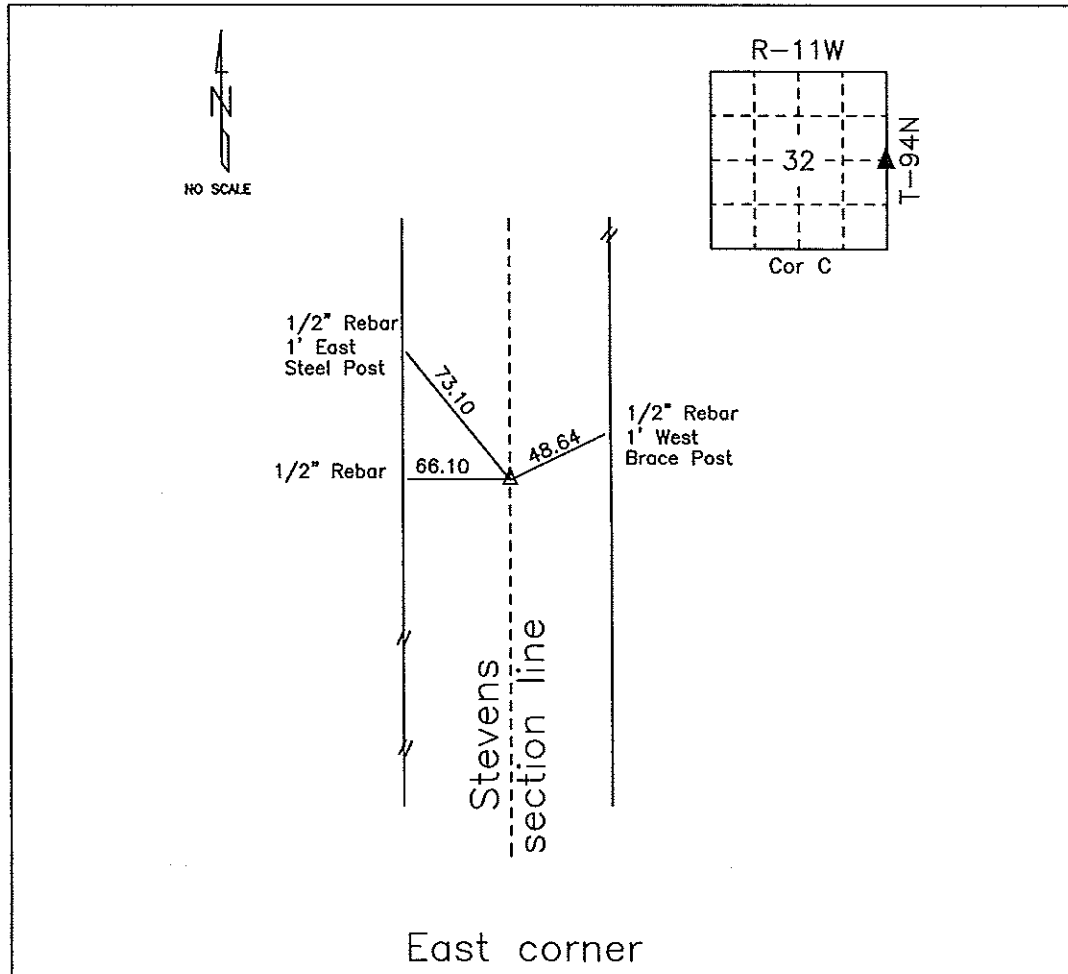
I hereby certify that this land surveying document was prepared and the related survey work was performed by me or under my direct personal supervision and that I am a duly licensed Land Surveyor under the laws of the State of Iowa.
Kirk D. Reicks 12-4-14
 Kirk D. Reicks Date:
 License number 19211
 My license renewal date is December 31, 2014.
 Sheets covered by this seal: Individual sheet only

List Corners to be Indexed			
Corners	Section	Twp.	Range
W 1/4	33	94	11
Project Number: 2014-238			
FB: Chickasaw County 7, Pg. 17			

File: S:_CAD Projects\County Control Systems\CHICKASAW\CHICK-51.dwg, 12/3/2014 4:33:06 PM

COUNTY ENGINEER'S SECTION CORNER PRESERVATION RECORD

LAND SURVEY MONUMENT LOCATED IN SECTION 32, TOWNSHIP 94 N
NORTH, RANGE 11 W, OF THE 5TH P.M. Chickasaw COUNTY, IOWA
PREVIOUSLY RECORDED COUNTY ENGINEER'S OFFICE



MONUMENT DESCRIPTION AND NARRATIVE Found 07/29/2009.

Found bent spike close to surface from 8/25/56. Doug 3.5' hole & found large rock that was flat on west side below nail. Set 1/2" rebar on west side of rock for const. only. All ties are slope chained.

I AM NOT A REGISTERED LAND SURVEYOR UNDER THE LAWS OF THE STATE OF IOWA.

JIM FOSTER CHICKASAW CO. DATE: 07/29/09