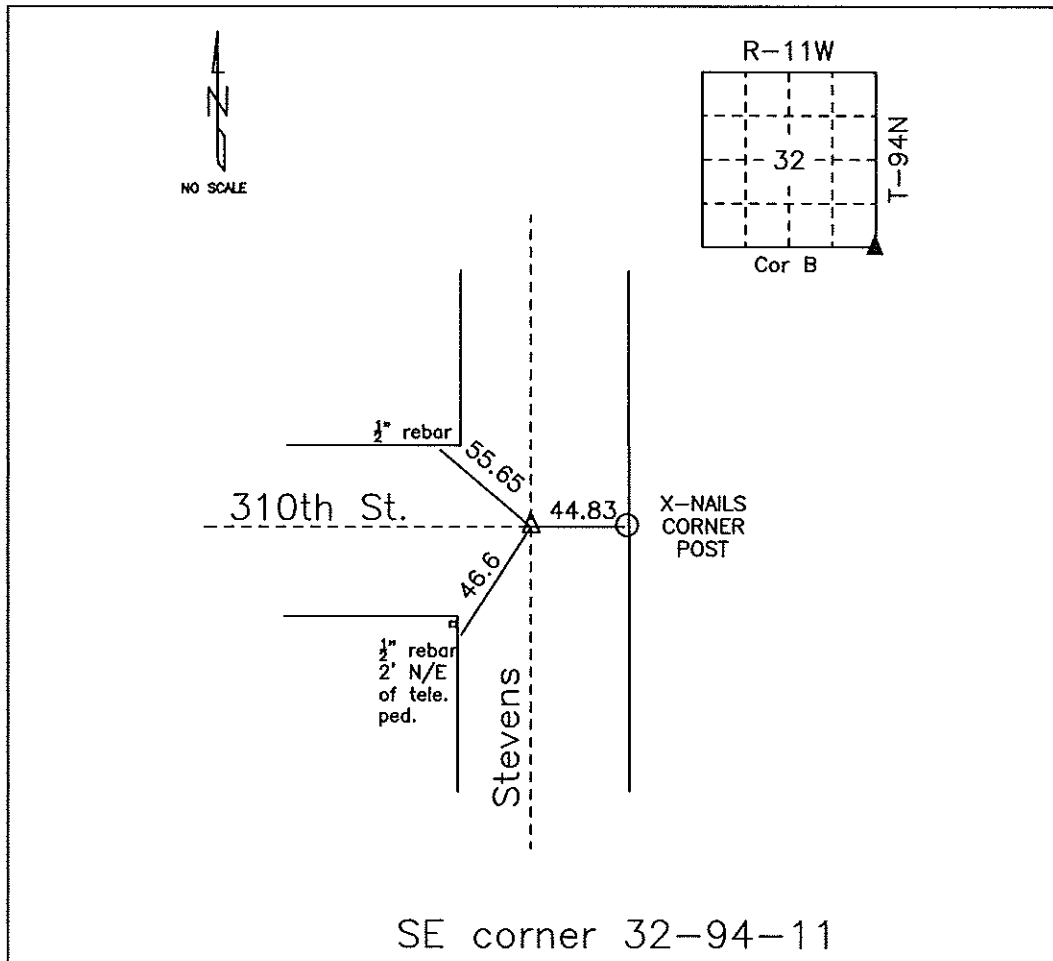


# COUNTY ENGINEER'S SECTION CORNER PRESERVATION RECORD

LAND SURVEY MONUMENT LOCATED IN SECTION 32, TOWNSHIP 94 N  
NORTH, RANGE 11 W, OF THE 5TH P.M. Chickasaw COUNTY, IOWA  
PREVIOUSLY RECORDED COUNTY ENGINEER'S OFFICE



MONUMENT DESCRIPTION AND NARRATIVE Found 07/29/2009

Set Iron Pin for construction only, 5-25-1956.

All ties are slope chained.

I AM NOT A REGISTERED LAND SURVEYOR UNDER THE LAWS OF THE STATE OF IOWA.

JIM FOSTER CHICKASAW CO. DATE: 07/29/09