

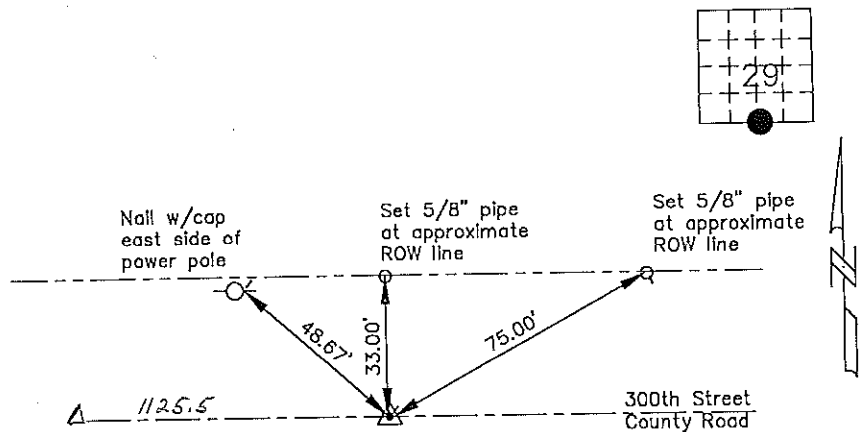
Prepared by: Erdman Engineering, P.C. 708 Commerce Drive, P.O. Box 246, Decorah, Iowa 52101
 Phone (319)382-4194, Fax (319)382-3623

United States Public Land Survey Corner Certificate of

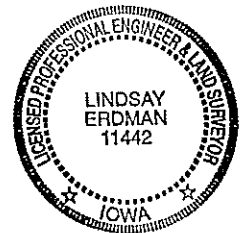
Land Survey Monuments situated in Section 29 Township 94 Range 11 of the Fifth Principle Meridian,
 Chickasaw County, Iowa. Previously recorded in does not apply in County Recorders Office.

Monument Description and Remarks: This certificate is prepared in accordance with Section 355.11 of the 1995 Code of Iowa. No previous certificate has been filed for this corner location. Based on the plat of survey recorded in Book 141 page 134 in the Chickasaw County Recorder's Office we searched for the number 5 rebar that had been previously set. We did not find the rebar as it appears to have been graded out. We found the SW Corner of Section 29 and a number 5 rebar that had been set on line between the S 1/4 Corner and the SW Corner, at the SW corner of a parcel described by metes and bounds recorded in Book 141 page 134 in the Chickasaw County Recorder's Office. From these corners we set a 1/2" bar w/cap Iowa RLS #11442 on the extension of a line from the SW Corner through the rebar at the SW corner of said recorded parcel at the platted distance of 1125.5' from the rebar at the S 1/4 Corner of Section 29, Township 94 North, Range 11 West. The corner falls a the approximate centerline of the county road. No other evidence of the corner was found.

Plan-View



Cor A



I hereby certify that the survey work was completed and this certificate was prepared by me or under my direct supervision and that I am a duly registered land surveyor under the laws of the State of Iowa.

Signature: Lindsay Erdman
 Lindsay Erdman, P.E. and L.S.
 Date: 12/22/93 Reg. No. 11442

My license renewal date is December 31, 2000

List Corners to be Indexed			
Corners	Section	Twp.	Range
S 1/4	29	94	11