

Chickasaw Co. Recorder  
 Cindy Messersmith  
**Fee Book 2013-2085**  
 12/20/2013 @0320PM  
 SCC: SEC COR CERT  
 Book: Page: # Pages: 1  
 Total Fees: \$7.00

Prepared by & Return to: Herald - Reicks Surveying, 10 East Main Street, New Hampton, IA 50659, Ph. 641-394-2725

**UNITED STATES PUBLIC LAND SURVEY CORNER CERTIFICATE**

Land Survey Monuments situated in Section 32, Township 94 North, Range 11 West of the Fifth Principal Meridian, Chickasaw County, Iowa. 1., 2.) Not previously recorded in the County Recorder's office.

This certificate is being prepared in compliance with Iowa Code Chapter 355.11 because:

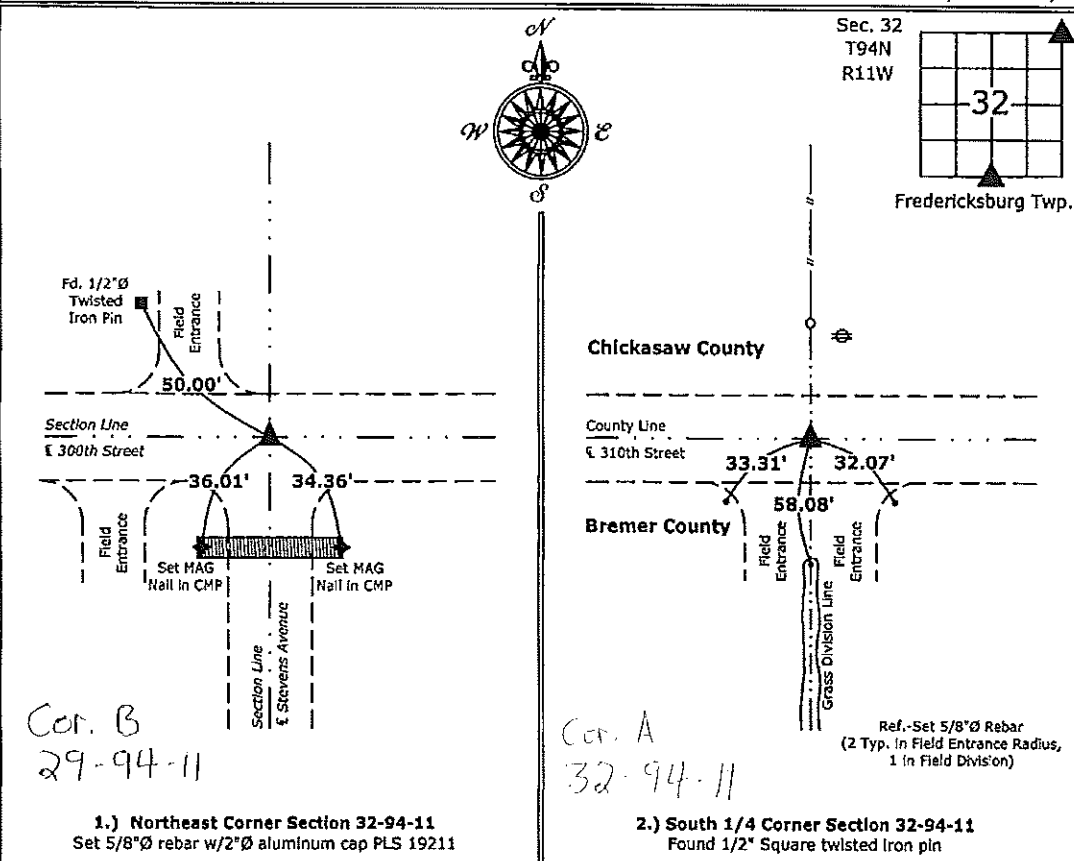
- 1 & 2  There is no certificate on file for this corner.  
 There are no longer three valid ties of record.  
 There are changes to reference ties of record.  
 There is change of monumentation of record.  
 To clarify description of record monument (ties).

Monument Description and Remarks:

- Northeast Corner:** Set 5/8"Ø rebar w/2"Ø aluminum cap PLS 19211 at record distance from remaining tie with from information obtained from the County Engineers office in Corner Reference Field Book, Corner "B", Section 29.
- South 1/4 Corner:** Found 1/2" Square twisted iron pin with information obtained from the previous Section Corner Certificate, Document #1994-3691, on file in Bremer County Recorders office, Waverly, Iowa.

**PLAN - VIEW**

(Show a minimum of three reference ties to durable physical objects, relevant monuments and physical conditions that will enable recovery of the corner.)



Cor. B  
29-94-11

Cor. A  
32-94-11

1.) **Northeast Corner Section 32-94-11**  
Set 5/8"Ø rebar w/2"Ø aluminum cap PLS 19211

2.) **South 1/4 Corner Section 32-94-11**  
Found 1/2" Square twisted iron pin



I hereby certify that this land surveying document was prepared and the related survey work was performed by me or under my direct personal supervision and that I am a duly licensed Land Surveyor under the laws of the State of Iowa.  
*Kirk D. Reicks* 12-20-13  
 Kirk D. Reicks Date:  
 License number 19211  
 My license renewal date is December 31, 2014.  
 Sheets covered by this seal: Individual sheet only

| List Corners to be Indexed |         |      |       |
|----------------------------|---------|------|-------|
| Corners                    | Section | Twp. | Range |
| NE                         | 32      | 94   | 11    |
| S 1/4                      | 32      | 94   | 11    |

Project Number: 2013-182  
 FB: Chickasaw 6, Pgs. 11-12

File: S:\\_CSD Projects\2013\2013-182\2013-182.dwg, 12/20/2013 10:19:42 AM