

Prepared by/Return to: FEHR GRAHAM, 128 S. Vine Street, West Union IA 52175 - Ph: (563)422-5131

UNITED STATES PUBLIC LAND SURVEY CORNER CERTIFICATE

Land Survey Monuments situated in Section 34³³ OF 33, Township 94 North, Range 11 West of the Fifth Principal Meridian, Chickasaw County, Iowa.
 Previously recorded in none in County Recorder's Office.
 (book, page, document number, etc.)

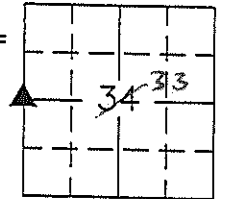
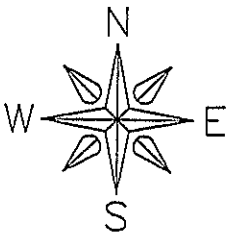
(Show reason for preparing this certificate, the evidence and detailed procedures used in establishing the corner positions and monumentation found or placed.)

Monument Description and Remarks: W1/4 Corner of Section 34-T94N-R11W:
Re-established corner position from Chickasaw County Engineer's ties. Placed Cut X as the W1/4 Corner of Section 34.

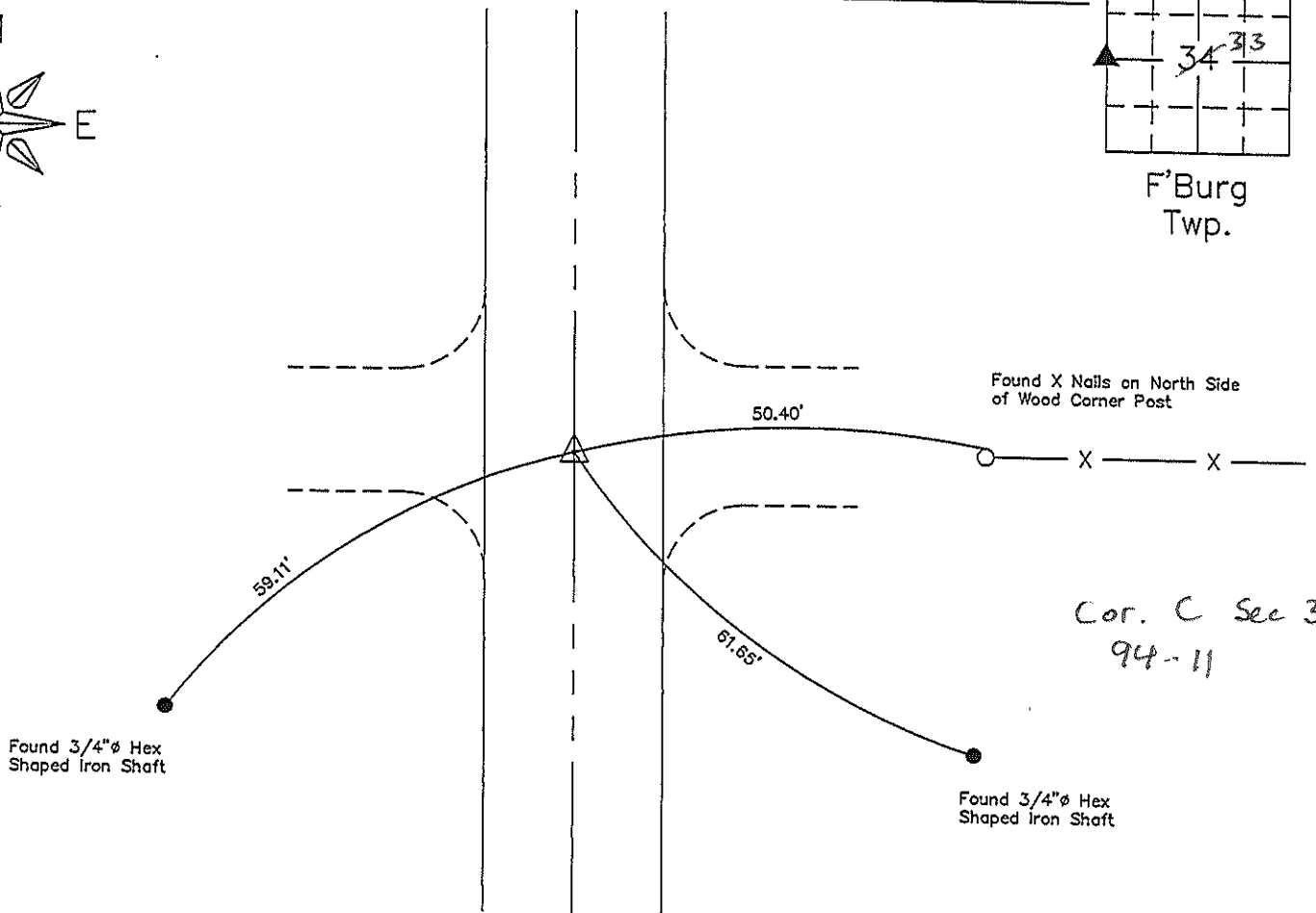
PLAN VIEW

Project Number 14-734

Show a minimum of three reference ties to durable physical objects, relevant monuments and physical conditions that will enable recovery of the corner.

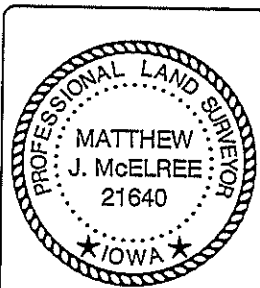


F'Burg Twp.



Cor. C Sec 33
94-11

W1/4 Corner of Sec. 34-T94N-R11W
 Placed Cut X



I hereby certify that this land surveying document was prepared and the related survey work was performed by me or under my direct personal supervision and that I am a duly licensed Land Surveyor under the laws of the State of Iowa.

Matthew J. McElree 8-27-14
 Matthew J. McElree, P.L.S. Date
 License Number: 21640
 My license renewal date is December 31, 2014.
 Sheets covered by this seal: This Sheet Only

List Corners to be Indexed			
Corners	Section	Twp.	Range
W1/4	34	94N	11W

X:\Section Corners\Sec. 34 COUNTY ENGINEER'S COPY