

Prepared by & Return to: Kirk D. Reicks, HRS, LLC, 10 East Main Street, New Hampton, IA 50659, Phone 641-394-2725

United States Public Land Survey Corner Certificate

Land Survey Monument situated in
 Section 33, Township 94 North, Range 11 West of the Fifth Principal Meridian, Chickasaw County, Iowa.
 Not on file in the County Recorder's Office.

This certificate is being prepared in compliance with Iowa Code Chapter 355.11 because:

- There is no certificate on file for this corner.
- There are no longer three valid ties of record.
- There are changes to reference ties of record.
- There is change of monumentation of record.
- To clarify description of record monument (ties).

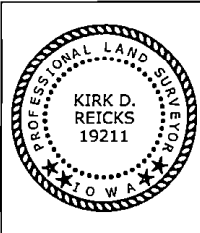
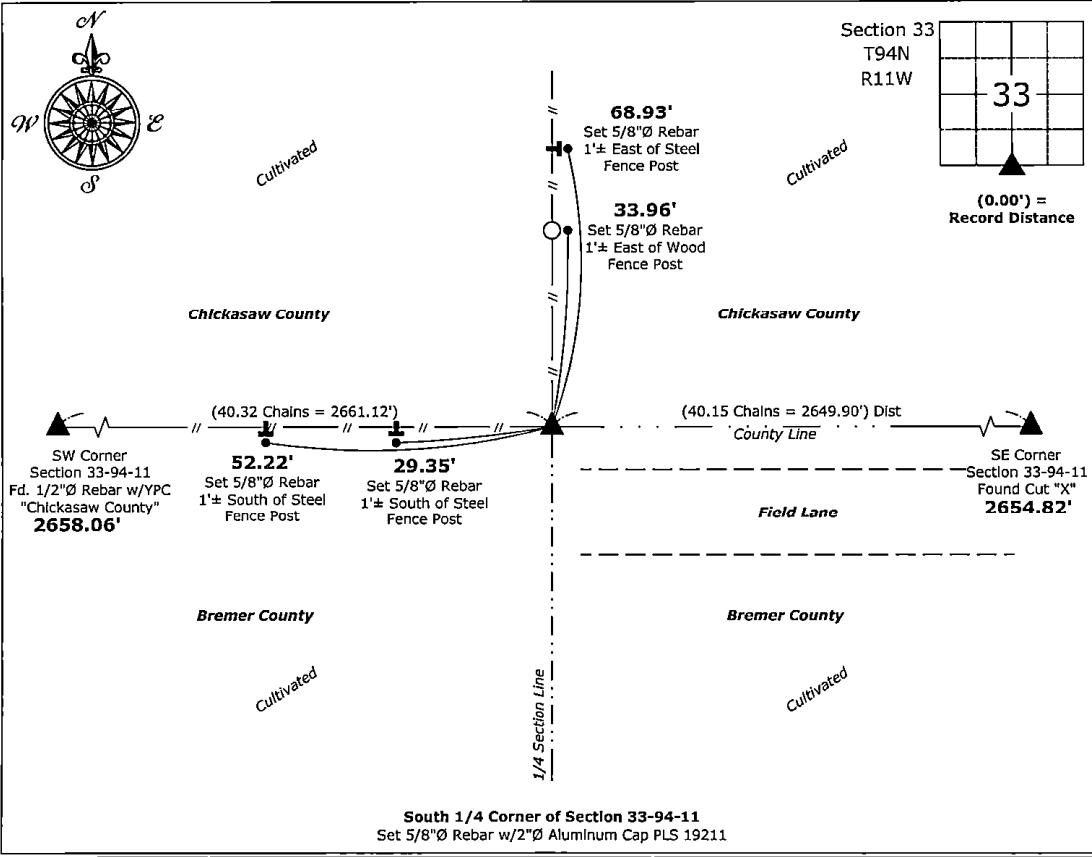
Monument Description and Remarks:

South 1/4 Corner:

Bremer County Engineer's Field Notes indicate a stone (No Size or Type noted) at 40.15 Chains from the Northeast Corner of Section 4-93-11 and 40.32 Chains from the Northwest Corner of Section 4-93-11. Searched with a metal locator and probed a 20' Radius at both Record Chain distances and found several native granite stones. However, no particular stone could be accepted as the true corner. Set 5/8"Ø Rebar w/2"Ø Aluminum Cap PLS 19211 at the Southeast Side of an existing wood corner post. This position matches local field evidence and occupation.

Plan View - Not to Scale

(Show a minimum of three reference ties to durable physical objects, relevant monuments and physical conditions that will enable recovery of the corner.)



I hereby certify that this land surveying document was prepared and the related survey work was performed by me or under my direct personal supervision and that I am a duly licensed Land Surveyor under the laws of the State of Iowa.

Kirk D. Reicks 12-2-2025
 Kirk D. Reicks Date:
 License Number 19211
 My license renewal date is December 31, 2026.
 Sheets covered by this seal: Individual sheet only

List Corner to be Indexed			
Corner	Section	Township	Range
S 1/4	33	94	11
Project Number: 2025-104			
FB: Chickasaw 14, Page(s) 25-26			