

UNITED STATES PUBLIC LAND SURVEY CORNER CERTIFICATE

OF
 Land Survey Monuments situated in Section 34, Township 94 North, Range 11 West of the Fifth Principal Meridian, CHICKASAW County, Iowa.
 Previously recorded in none in County Recorder's Office.
(book, page, document number, etc.)

(Show reason for preparing this certificate, the evidence and detailed procedures used in establishing the corner positions and monumentation found or placed.)

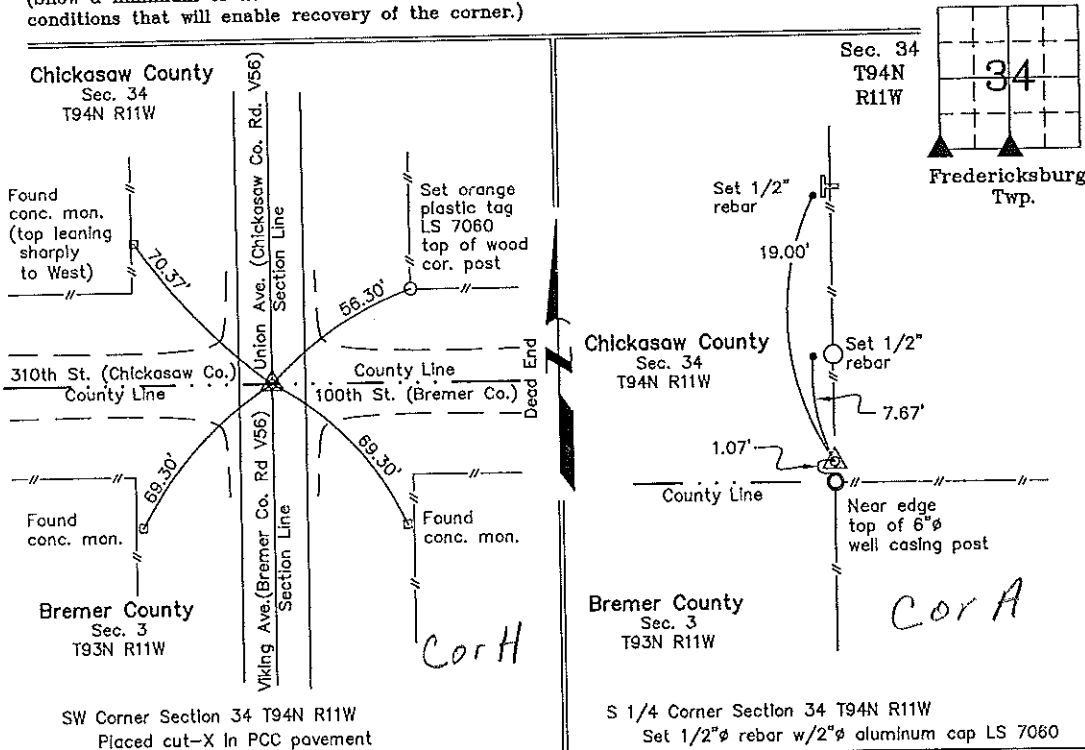
Monument Description and Remarks: SW Corner Section 34 T94N R11W: Placed cut-X in PCC pavement using county ties obtained from the Bremer County Engineer's Office in the Section Corner Ties file.

S 1/4 Corner Section 34 T94N R11W: Set 1/2"Ø rebar w/2"Ø aluminum cap LS 7060 by extending a line from the S 1/4 Corner Section 3-93-11 through the Quarter Section Line fence and intersecting the Section Line between the NE Corner and the NW Corner, Section 3-93-11.

PLAN - VIEW

Project Number 00228.15
 FH 46H PG. 42-44

(Show a minimum of three reference ties to durable physical objects, relevant monuments and physical conditions that will enable recovery of the corner.)



I hereby certify that this land surveying document was prepared and the related survey work was performed by me or under my direct personal supervision and that I am a duly licensed Land Surveyor under the laws of the State of Iowa.

Lyle G. TeKippe 1-12-01
 Lyle G. TeKippe Date
 License number 7060
 My license renewal date is December 31, 2002.
 Sheets covered by this seal: Individual

List Corners to be Indexed			
Corners	Section	Twp.	Range
SW	34	94N	11W
Cor B	Sec 33		
S 1/4	34	94N	11W
Entered in tiebook 1-18-01			

County Engineer's Copy