

Instr. Number: 2019-1332  
 Recorded: 9/9/2019 at 4:00:32.0 PM  
 Pages 1  
 County Recording Fee: \$7.00  
 Iowa E-Filing Fee: \$3.00  
 Combined Fee: \$10.00  
 Revenue Tax:  
 Shirley Troyna RECORDER  
 Chickasaw County, Iowa

Prepared by & Return to: Herold - Reicks Surveying, 2206 East Bremer Avenue, Waverly, IA 50677, Ph. 319-483-5187

### United States Public Land Survey Corner Certificate

Land Survey Monument situated in  
 Section 34, Township 94 North, Range 11 West of the Fifth Principal Meridian, Chickasaw County, Iowa.  
 On file in Document #2001-0077 in the County Recorder's office.

This certificate is being prepared in compliance with Iowa Code Chapter 355.11 because:



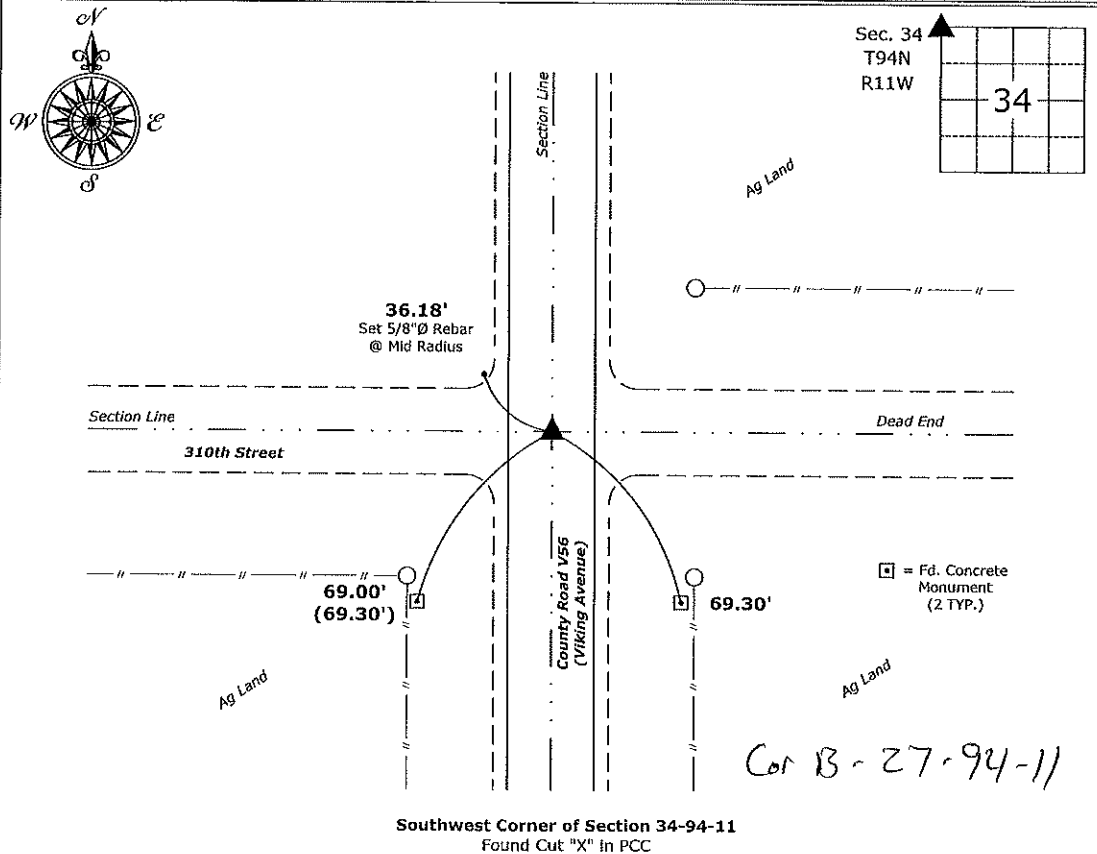
- There is no certificate on file for this corner.
- There are no longer three valid ties of record.
- There are changes to reference ties of record.
- There is change of monumentation of record.
- To clarify description of record monument (ties).

**Monument Description and Remarks:**

**Southwest Corner:** Found Cut "X" in PCC with information obtained from the previously recorded Section Corner Certificate.

### Plan View

(Show a minimum of three reference ties to durable physical objects, relevant monuments and physical conditions that will enable recovery of the corner.)



Southwest Corner of Section 34-94-11  
 Found Cut "X" in PCC



I hereby certify that this land surveying document was prepared and the related survey work was performed by me or under my direct personal supervision and that I am a duly licensed Land Surveyor under the laws of the State of Iowa.  
*Isaiah M. Reicks* 9-3-19  
 Isaiah M. Reicks Date:  
 License number 22468  
 My license renewal date is December 31, 2019.  
 Sheets covered by this seal: Individual sheet only

List Corner to be Indexed			
Corner	Section	Twp.	Range
SW	34	94	11

Project Number: 2019-Bremer-4  
 FB: Bremer 14, Pgs. 25-26

File: I:\\_Projects - WO\County Control Systems\WO\BREMER\BREMER-4\BREMER-4.dwg, 9/3/2019 5:14:49 PM

Prepared by/Return to: FEHR GRAHAM/TeKippe Engineering, 128 S Vine Street, West Union, Iowa 52176 Ph. (663)422-6131

**UNITED STATES PUBLIC LAND SURVEY CORNER CERTIFICATE**

OF 28  
 Land Survey Monuments situated in Section 27, Township 94 North, Range 11 West of the Fifth Principal Meridian, Chickasaw County, Iowa.  
 Previously recorded in Bk. 2009, Pg. 1773 in County Recorder's Office.  
 (book, page, document number, etc.)

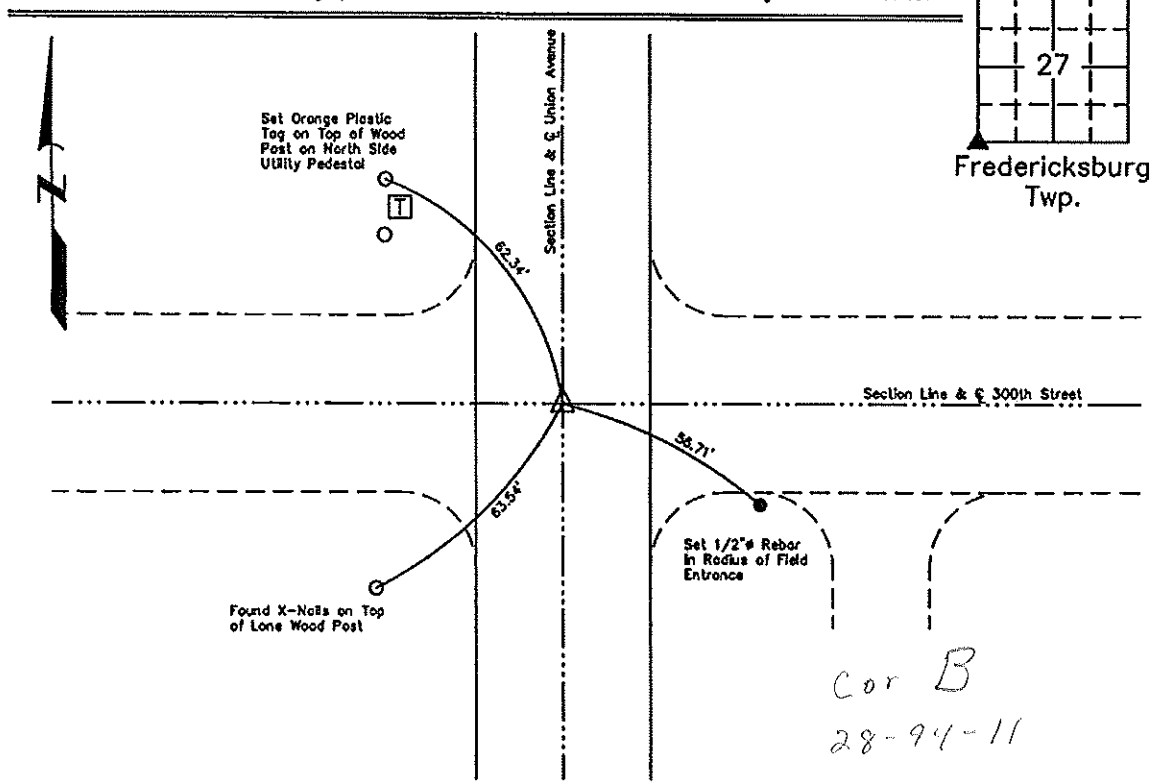
(Show reason for preparing this certificate, the evidence and detailed procedures used in establishing the corner positions and monumentation found or placed.)

Monument Description and Remarks: SW Corner of Section 27-T94N-R11W:  
 Found cut X 1.55 feet West of Centerline in pavement per survey of record as the corner. Updating certificate because two ties of record were missing and added two new ties.

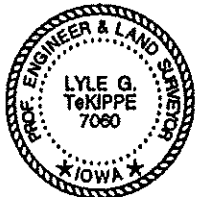
**PLAN VIEW**

Project Number 13-297  
 Field Book: 46N, Page 1

Show a minimum of three reference ties to durable physical objects, relevant monuments and physical conditions that will enable recovery of the corner.



(1) SW Corner of Sec. 27-T94N-R11W  
 Found Cut X In Pavement

	I hereby certify that this land surveying document was prepared and the related survey work was performed by me or under my direct personal supervision and that I am a duly licensed Land Surveyor under the laws of the State of Iowa.	<b>List Corners to be Indexed</b>							
	Lyle G. TeKippe, P.E. & P.L.S. Date 2-20-13 License Number 7060 My license renewal date is December 31, 2014. Sheets covered by this seal: This Sheet Only	<table border="1"> <thead> <tr> <th>Corners</th> <th>Section</th> <th>Twp.</th> <th>Range</th> </tr> </thead> <tbody> <tr> <td>SW</td> <td>27</td> <td>94N</td> <td>11W</td> </tr> </tbody> </table>	Corners	Section	Twp.	Range	SW	27	94N
Corners	Section	Twp.	Range						
SW	27	94N	11W						

Prepared by/Return to: FEHR GRAHAM/TeKippe Engineering, 128 S Vine Street, West Union, Iowa 52176 Ph. (663)422-6131

**UNITED STATES PUBLIC LAND SURVEY CORNER CERTIFICATE**

OF 28  
 Land Survey Monuments situated in Section 27, Township 94 North, Range 11 West of the Fifth Principal Meridian, Chickasaw County, Iowa.  
 Previously recorded in Bk. 2009, Pg. 1773 in County Recorder's Office.  
 (book, page, document number, etc.)

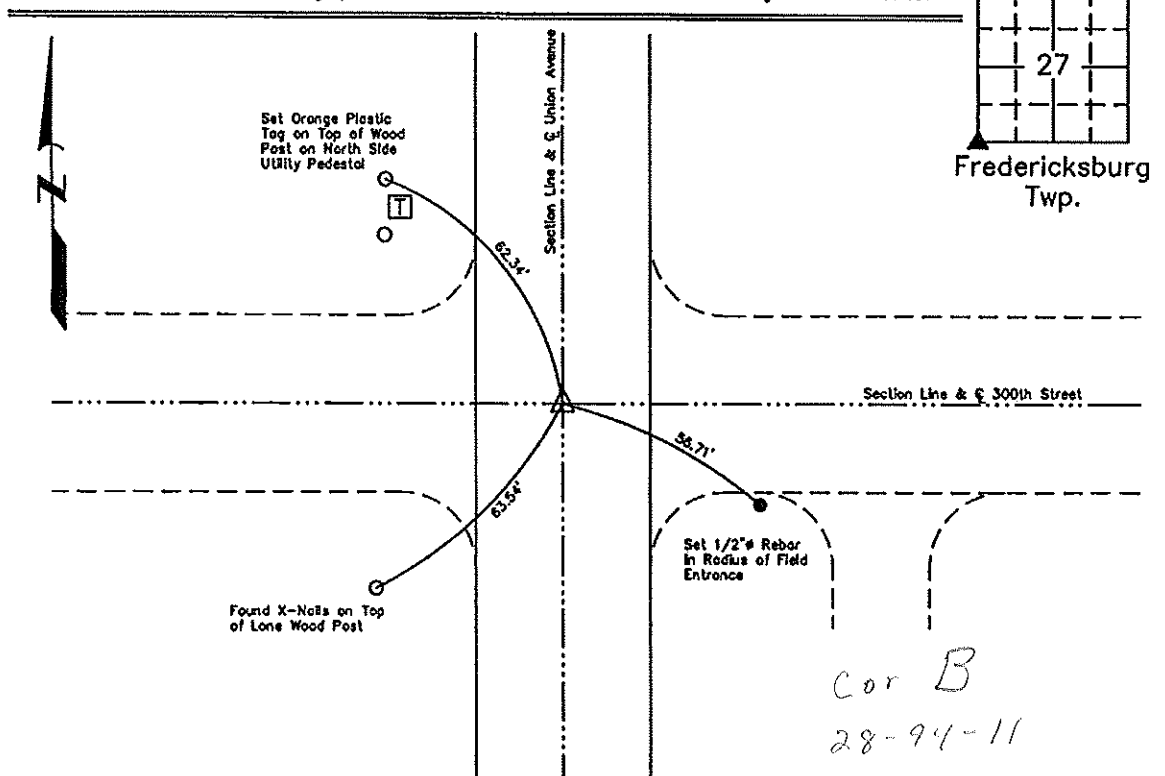
(Show reason for preparing this certificate, the evidence and detailed procedures used in establishing the corner positions and monumentation found or placed.)

Monument Description and Remarks: SW Corner of Section 27-T94N-R11W:  
 Found cut X 1.55 feet West of Centerline in pavement per survey of record as the corner. Updating certificate because two ties of record were missing and added two new ties.

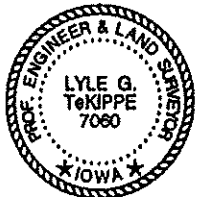
**PLAN VIEW**

Project Number 13-297  
 Field Book: 46N, Page 1

Show a minimum of three reference ties to durable physical objects, relevant monuments and physical conditions that will enable recovery of the corner.



(1) SW Corner of Sec. 27-T94N-R11W  
 Found Cut X In Pavement

	I hereby certify that this land surveying document was prepared and the related survey work was performed by me or under my direct personal supervision and that I am a duly licensed Land Surveyor under the laws of the State of Iowa.	<b>List Corners to be Indexed</b>							
	Lyle G. TeKippe, P.E. & P.L.S. Date 2-20-13 License Number 7060 My license renewal date is December 31, 2014. Sheets covered by this seal: This Sheet Only	<table border="1"> <thead> <tr> <th>Corners</th> <th>Section</th> <th>Twp.</th> <th>Range</th> </tr> </thead> <tbody> <tr> <td>SW</td> <td>27</td> <td>94N</td> <td>11W</td> </tr> </tbody> </table>	Corners	Section	Twp.	Range	SW	27	94N
Corners	Section	Twp.	Range						
SW	27	94N	11W						

Sec. 28-94-11  
 AS referred to  
 IN Engr. Tie Book

Chickasaw Co. Recorder  
 Cindy Messersmith  
**Fee Book 2009-1773**  
 09/09/2009 @1040AM  
 SCC SEC COR CERT  
 Book: Page: # Pages: 1  
 Total Fees: \$9.00

Herold - Reicks Surveying, 25 1/2 East Main Street, Suite 204, New Hampton, IA 50658, Ph. 641-394-2725

**UNITED STATES PUBLIC LAND SURVEY CORNER CERTIFICATE**

Land Survey Monuments situated in Section <sup>28</sup> 33, Township 94 North, Range 11 West of the Fifth Principal Meridian, Chickasaw County, Iowa. Previously not recorded in the County Recorder's office.

This certificate is being prepared in compliance with Iowa Code Chapter 355.11 because:

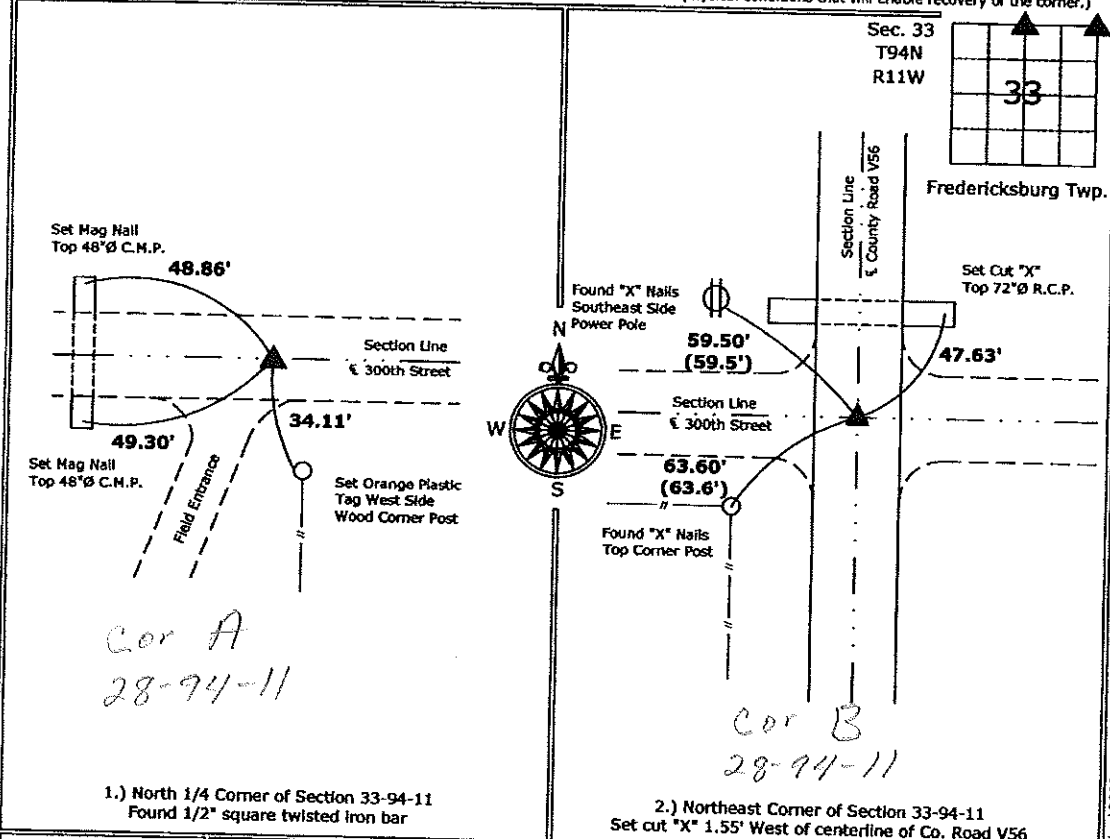
- 1., 2.  There is no certificate on file for this corner.  
 There are no longer three valid ties of record.  
 There are changes to reference ties of record.  
 There is change of monumentation of record.  
 To clarify description of record monument (ties).

**Monument Description and Remarks:**

- 1.) **North 1/4 Corner:** Found 1/2" square twisted bar from information obtained from the County Engineer's office in book "Section Ties", Fredericksburg Township, Section 28, Corner "A".  
 2.) **Northeast Corner:** Set cut "X" in PCC roadway from information obtained from the County Engineer's office in book "Section Ties", Fredericksburg Township, Section 28, Corner "B".

**PLAN - VIEW**

(Show a minimum of three reference ties to durable physical objects, relevant monuments and physical conditions that will enable recovery of the corner.)



Cor A  
 28-94-11

Cor B  
 28-94-11

1.) North 1/4 Corner of Section 33-94-11  
 Found 1/2" square twisted iron bar

2.) Northeast Corner of Section 33-94-11  
 Set cut "X" 1.55' West of centerline of Co. Road V56



I hereby certify that this land surveying document was prepared and the related survey work was performed by me or under my direct personal supervision and that I am a duly licensed Land Surveyor under the laws of the State of Iowa.  
*Kirk D. Reicks* 9-9-09  
 Kirk D. Reicks Date:  
 License number 19211  
 My license renewal date is December 31, 2010.  
 Sheets covered by this seal: Individual sheet only

List Corners to be Indexed			
Corners	Section	Twp.	Range
N 1/4	33	94	11
NE	33	94	11

Project Number: 2009-104  
 FB: Chickasaw County 1, Pgs. 17-18

File: S:\Projects\2009-104\wing\2009-104.dwg, 9/9/2009 5:20:55 AM