

FILED 2002 - 0711
 RECORDER'S OFFICE
 CHICKASAW COUNTY, IOWA
see 4600
 2002 MAR 18 AM 9 39
 CINDY MESSERSMITH
 COUNTY RECORDER

COPY

TEKIPPE ENGINEERING, P.C., 128 South Vine Street, West Union, Iowa 52176 Phone (563) 422-5131

UNITED STATES PUBLIC LAND SURVEY CORNER CERTIFICATE

OF
 Land Survey Monuments situated in Section 34, Township 94 North, Range
11 West of the Fifth Principal Meridian, CHICKASAW County, Iowa.
 Previously recorded in none in County Recorder's Office.
 (book, page, document number, etc.)

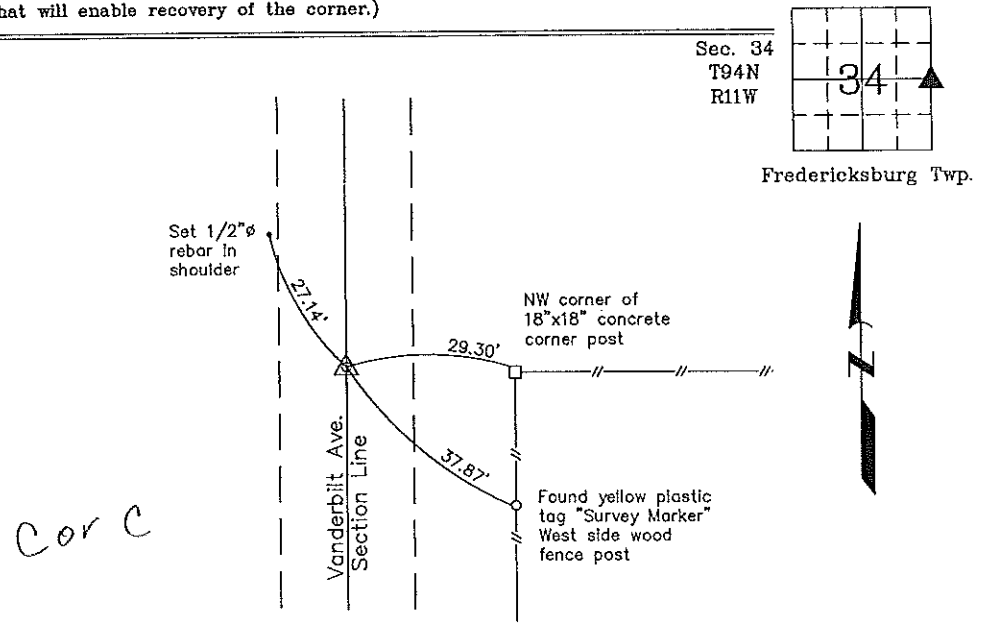
(Show reason for preparing this certificate, the evidence and detailed procedures used in establishing the corner positions and monumentation found or placed.)

Monument Description and Remarks: E 1/4 Corner Section 34 T94N R11W: Found 30d nail with information obtained from a Survey and Plat made by Steve Busse recorded in the Chickasaw County Recorder's Office July 24, 1997 in Deeds Book 164, Page 426. Replaced the 30d nail with 1/2"Ø rebar w/2"Ø aluminum cap PLS 15525.

PLAN - VIEW

349411o.dwg Project Number 02039.1S
 FB. 461 PG. 44-45

(Show a minimum of three reference ties to durable physical objects, relevant monuments and physical conditions that will enable recovery of the corner.)



E 1/4 Corner Section 34 T94N R11W
 Found 30d nail. Replaced nail with
 1/2"Ø rebar w/2"Ø aluminum cap PLS 15525



I hereby certify that this land surveying document was prepared and the related survey work was performed by me or under my direct personal supervision and that I am a duly licensed Land Surveyor under the laws of the State of Iowa.
Paul R. Herold 3-12-02
 Paul R. Herold Date
 License number 15525
 My license renewal date is December 31, 2002.
 Sheets covered by this seal: Individual

Corners	Section	Twp.	Range
E 1/4	34	94N	11W

Filed 3-20-02

County Engineer's Copy