

UNITED STATES PUBLIC LAND SURVEY CORNER CERTIFICATE

OF

Land Survey Monuments situated in Section 35, Township 94 North, Range 11 West, of the Fifth Principal Meridian, CHICKASAW County, Iowa. Previously recorded in NONE in County Recorder's Office.

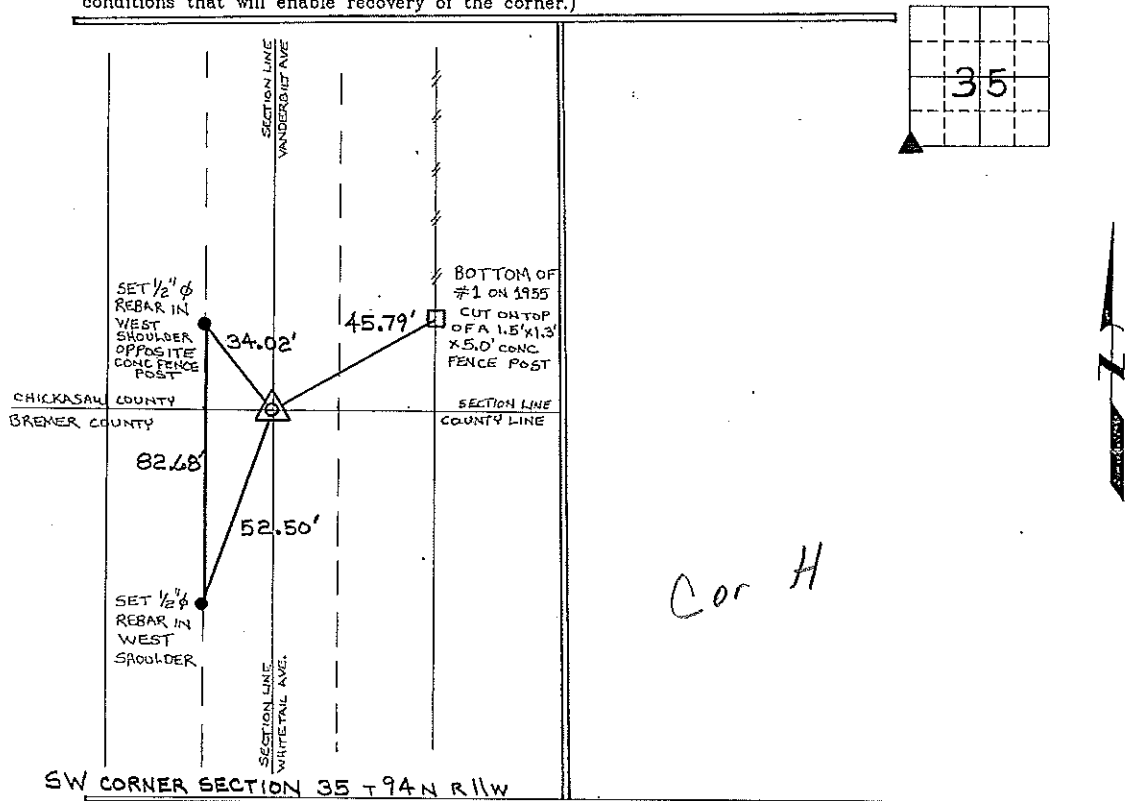
(book, page, document number, etc.)

(Show reason for preparing this certificate, the evidence and detailed procedures used in establishing the corner positions and monumentation found or placed.)

Monument Description and Remarks: SW CORNER SECTION 35 T94N R11W
FOUND 1/2" SQUARE-TWISTED IRON BAR, E OF WHITE TAIL AVE./VANDERBILT AVE.
ON THE CHICKASAW/BREMER COUNTY LINE.

PLAN - VIEW

(Show a minimum of three reference ties to durable physical objects, relevant monuments and physical conditions that will enable recovery of the corner.)

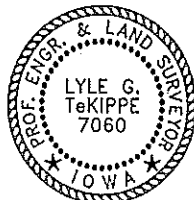


SW CORNER SECTION 35 T94N R11W

I hereby certify that the survey work was completed and this certificate was prepared by me or under my direct personal supervision and, that I am a duly registered land surveyor under the laws of the state of Iowa.

Signature: Lyle G. TeKippe
 Lyle G. TeKippe
 Date: 9-22-95 Reg. No. 7060
 My Registration Renewal Date is December 31, 1996

Seal



List Corners to be Indexed			
Corners	Section	Twp.	Range
SW	35	94N	11W

Placed in the Book 9/28/95

"County Engineer's Copy"