

TEKIPPE ENGINEERING, P.C., 128 South Vine Street, West Union, Iowa 52176 Phone (563) 422-6131

UNITED STATES PUBLIC LAND SURVEY CORNER CERTIFICATE
 OF

Land Survey Monuments situated in Section 27, Township 94, North, Range 11 West of the Fifth Principal Meridian, Chickasaw County, Iowa.
 Previously recorded in (1) none (2) Doc. #2001-0739 in County Recorder's Office.
 (book, page, document number, etc.)

(Show reason for preparing this certificate, the evidence and detailed procedures used in establishing the corner positions and monumentation found or placed.)

Monument Description and Remarks: (1) S1/4 Corner of Section 27-T94N-R11W:

Found 5/8" iron pin from information obtained from Chickasaw County Engineer's files on file in the Chickasaw County Engineer's office, New Hampton, Iowa. Accepted the found monument as the S1/4 Corner of the Section.

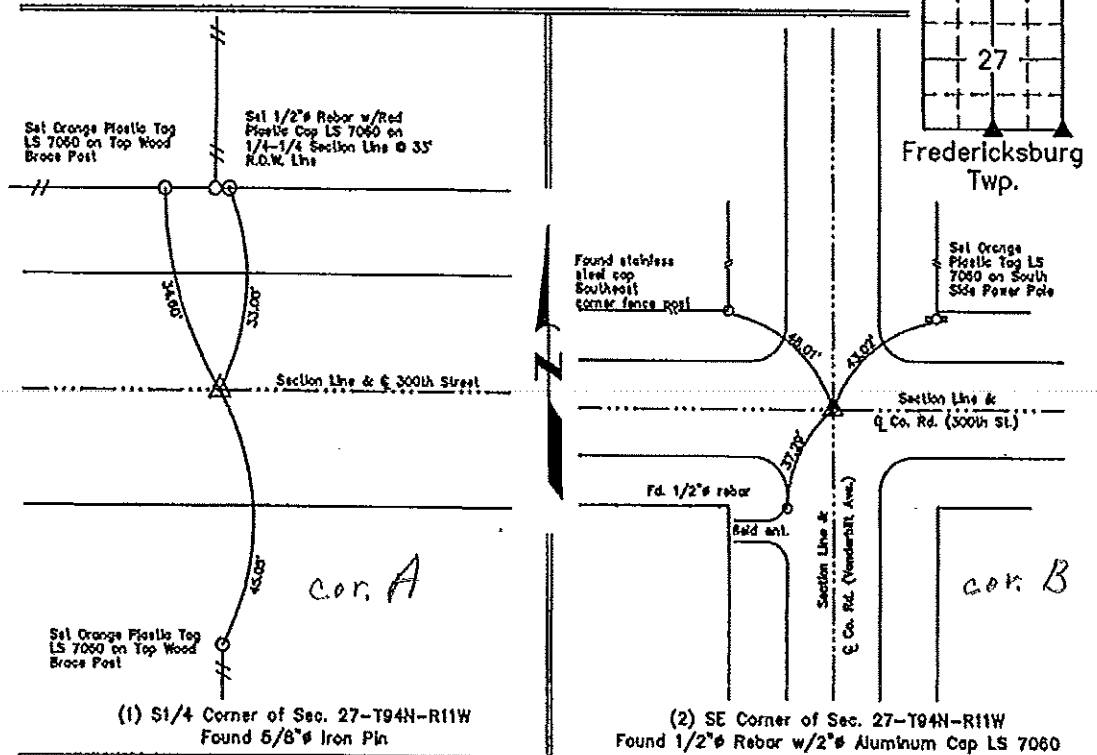
(2) SE Corner of Section 27-T94N-R11W:

Found 1/2" rebar with 2" aluminum cap LS 7060 from two remaining ties of record. Updating certificate because one tie of record was missing, so added one new tie.

PLAN VIEW

Project Number 101008.LS
 Field Book: 46M, Page 71

Show a minimum of three reference ties to durable physical objects, relevant monuments and physical conditions that will enable recovery of the corner.



I hereby certify that this land surveying document was prepared and the related survey work was performed by me or under my direct personal supervision and that I am a duly licensed Land Surveyor under the laws of the State of Iowa.

LYLE O. TEKIPPE
 License Number 7060
 My license renewal date is December 31, 2010.
 Sheets covered by this set: Individual

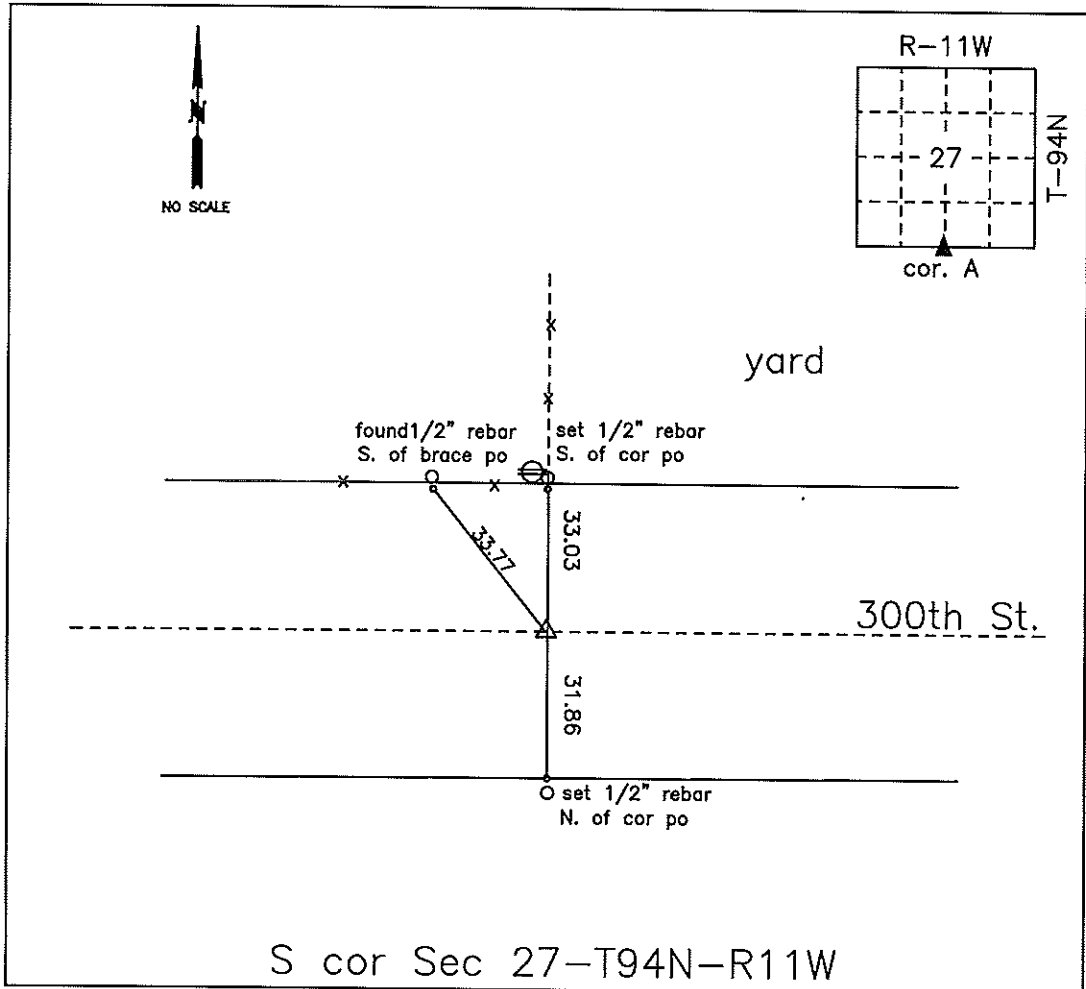
Lyle O. Tekippe 9-29-10
 Lyle O. Tekippe Date

List Corners to be Indexed			
Corners	Section	Twp.	Range
S1/4	27	94N	11W
SE	27	94N	11W

X:\Section Corners\Sec. 27\27-94-11W.dwg

COUNTY ENGINEER'S SECTION CORNER PRESERVATION RECORD

LAND SURVEY MONUMENT LOCATED IN SECTION 27, TOWNSHIP 94 N
NORTH, RANGE 11 W, OF THE 5TH P.M. CHICKASAW COUNTY, IOWA
PREVIOUSLY RECORDED none



MONUMENT DESCRIPTION AND NARRATIVE Found iron pin in center of road in line with
road east and west from county engineer tie book. 2 ties were missing. Set 2 rebar w/caps

All ties are GPS surveyed.

I AM NOT A REGISTERED LAND SURVEYOR UNDER THE LAWS OF THE STATE OF IOWA

JIM FOSTER CHICKASAW CO. DATE: 11/05/13