



SHIMAK SURVEYING, P.L.L.C., 3212 335th Street, Cresco, Iowa 52136 Phone (563) 379-8899

UNITED STATES PUBLIC LAND SURVEY CORNER CERTIFICATE

OF

Land Survey Monuments situated in Section 26, Township 94 North, Range 11 West of the Fifth Principal Meridian, Chickasaw County, Iowa.

Previously recorded in 1.) Fee Bk. 2010-1490 2.) None in County Recorder's Office.
 (book, page, document number, etc.)

(Show reason for preparing this certificate, the evidence and detailed procedures used in establishing the corner positions and monumentation found or placed.)

Monument Description and Remarks: 1.) SW Corner of Section 26-T94N-R11W:
Fd. 1/2"Ø Rebar. w/Red Plastic Sleeve. The 2"Ø Alum. Cap is missing. From Previous Section Corner Certificate.

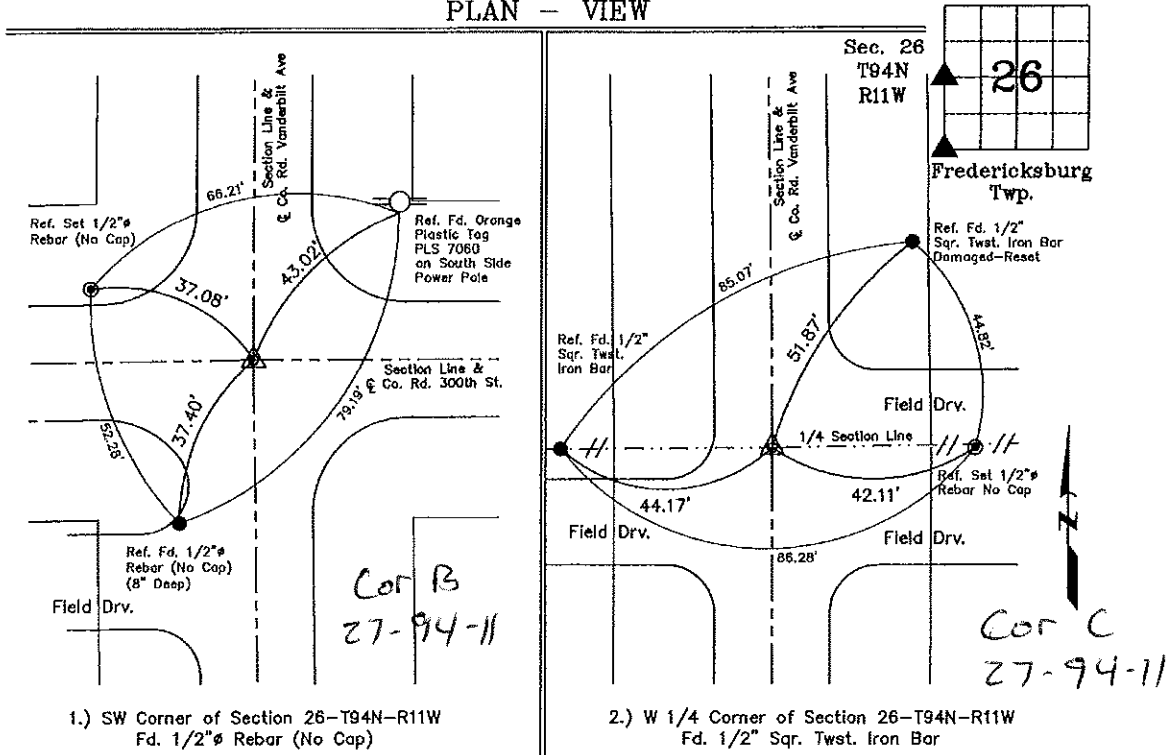
One Tie is missing. Ties were Placed as Shown Below.

2.) W 1/4 Corner of Section 26-T94N-R11W:

Fd. 1/2" Sqr. Twst. Iron Bar from County Engineer's Notes.

One Tie is missing. Ties were Placed as Shown Below.

PLAN - VIEW



1.) SW Corner of Section 26-T94N-R11W
 Fd. 1/2"Ø Rebar (No Cap)

2.) W 1/4 Corner of Section 26-T94N-R11W
 Fd. 1/2" Sqr. Twst. Iron Bar



I hereby certify that this land surveying document was prepared and the related survey work was performed by me or under my direct personal supervision and that I am a duly licensed Land Surveyor under the laws of the State of Iowa.

Michael J. Shimak 5-31-2018
 Michael J. Shimak Date:

License number 16961
 My license renewal date is December 31, 2019.
 Sheets covered by this seal: Sheet P1

List Corners to be Indexed

Corners	Section	Twp.	Range
1.) SW Corner	26	94N	11W
2.) W 1/4 Corner	26	94N	11W

Project Number: 18-07-18.15
 FB. Howard/Chickasaw No. 1, Fgs. 5-10

TEKIPPE ENGINEERING, P.C., 128 South Vine Street, West Union, Iowa 52175 Phone (563) 422-6131

UNITED STATES PUBLIC LAND SURVEY CORNER CERTIFICATE
 OF

Land Survey Monuments situated in Section 27, Township 94, North, Range 11 West of the Fifth Principal Meridian, Chickasaw County, Iowa.
 Previously recorded in (1) none (2) Doc. #2001-0739 in County Recorder's Office.
(book, page, document number, etc.)

(Show reason for preparing this certificate, the evidence and detailed procedures used in establishing the corner positions and monumentation found or placed.)

Monument Description and Remarks: (1) S1/4 Corner of Section 27-T94N-R11W:

Found 5/8" iron pin from information obtained from Chickasaw County Engineer's files on file in the Chickasaw County Engineer's office, New Hampton, Iowa. Accepted the found monument as the S1/4 Corner of the Section.

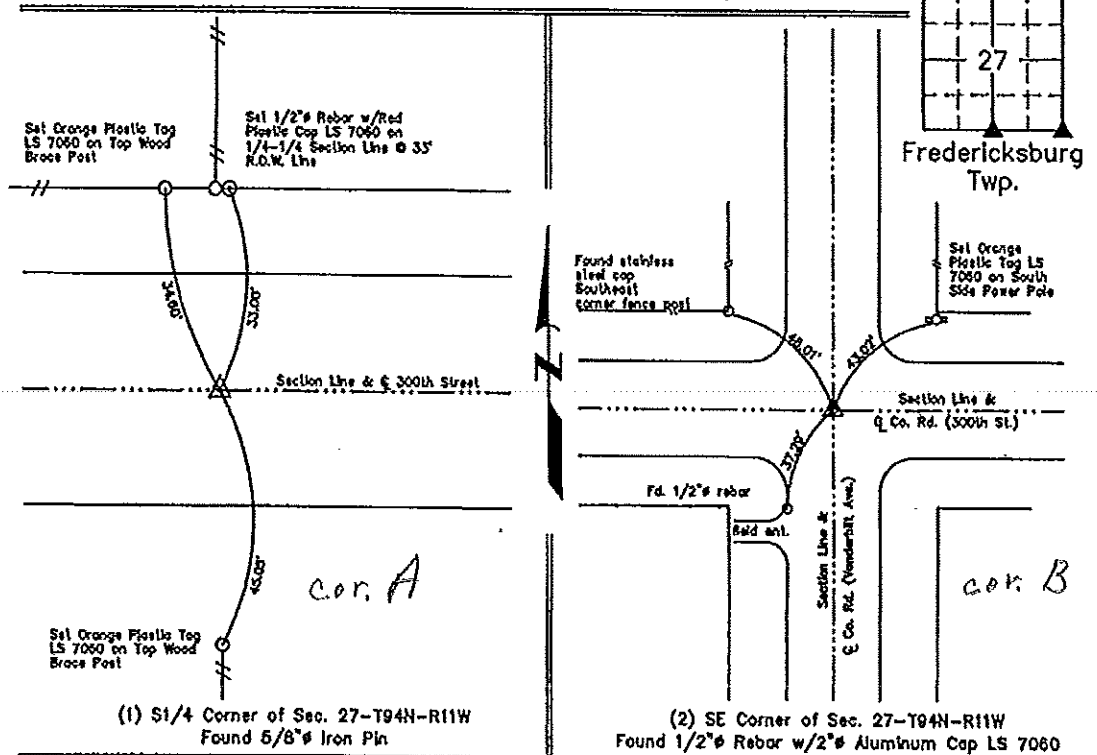
(2) SE Corner of Section 27-T94N-R11W:

Found 1/2" rebar with 2" aluminum cap LS 7060 from two remaining ties of record. Updating certificate because one tie of record was missing, so added one new tie.

PLAN VIEW

Project Number 101008.LS
 Field Book: 48M, Page 71

Show a minimum of three reference ties to durable physical objects, relevant monuments and physical conditions that will enable recovery of the corner.



I hereby certify that this land surveying document was prepared and the related survey work was performed by me or under my direct personal supervision and that I am a duly licensed Land Surveyor under the laws of the State of Iowa.

LYLE G. TEKIPPE
 License Number 7060
 My license renewal date is December 31, 2010.
 Sheets covered by this set: Individual

Lyle G. Tekippe 9-29-10
 Lyle G. Tekippe Date

List Corners to be Indexed			
Corners	Section	Twp.	Range
S1/4	27	94N	11W
SE	27	94N	11W

X:\Section Corners\Sec. 27\27-94-11WY.dwg

Section 27-94-11
 As referred to in
 Eng. Tie Book

TeKIPPE ENGINEERING, P.C., 128 South Vine Street, West Union, Iowa 52175 Phone (319) 422-5131

UNITED STATES PUBLIC LAND SURVEY CORNER CERTIFICATE

OF 27

Land Survey Monuments situated in Section 26, Township 94 North, Range 11 West of the Fifth Principal Meridian, CHICKASAW County, Iowa. Previously recorded in none in County Recorder's Office.
(book, page, document number, etc.)

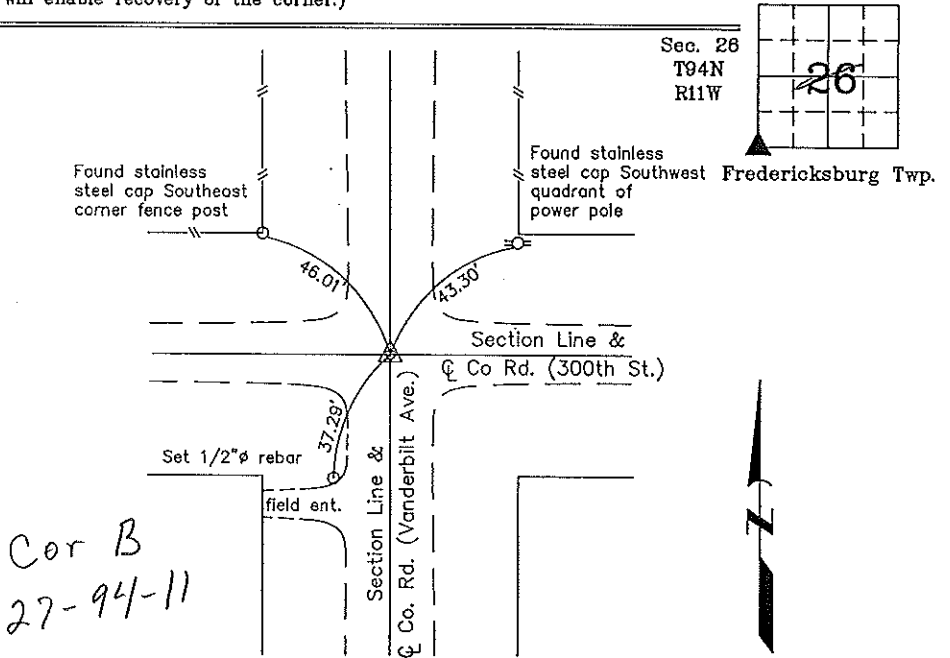
(Show reason for preparing this certificate, the evidence and detailed procedures used in establishing the corner positions and monumentation found or placed.)

Monument Description and Remarks: SW Corner Section 26 T94N R11W: Set 1/2"Ø rebar w/2"Ø aluminum cap LS 7060 with Chickasaw County ties obtained from the Chickasaw County Engineer's Office in the Field Book Fredericksburg Township, Corner B, Section 27. Two reference ties were missing. One reference tie was added.

PLAN - VIEW

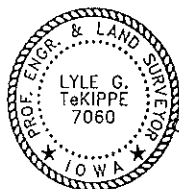
Project Number 01045.1S
 FR 481 PG. 18-19

(Show a minimum of three reference ties to durable physical objects, relevant monuments and physical conditions that will enable recovery of the corner.)



Cor B
 27-94-11

SW Corner Section 26 T94N R11W
 Set 1/2"Ø rebar w/2"Ø aluminum cap LS 7060



I hereby certify that this land surveying document was prepared and the related survey work was performed by me or under my direct personal supervision and that I am a duly licensed Land Surveyor under the laws of the State of Iowa.

Lyle G. TeKippe 4-17-01
 Lyle G. TeKippe Date
 License number 7060
 My license renewal date is December 31, 2002.
 Sheets covered by this seal: Individual

List Corners to be Indexed			
Corners	Section	Twp.	Range
SW	26	94N	11W

Filed