

Prepared By: Andrew J. Smith, Veenstra & Kimm, Inc. 2800 Fourth St. SW, Mason City, Iowa (641) 421-8008

UNITED STATES PUBLIC LAND SURVEY CORNER CERTIFICATE

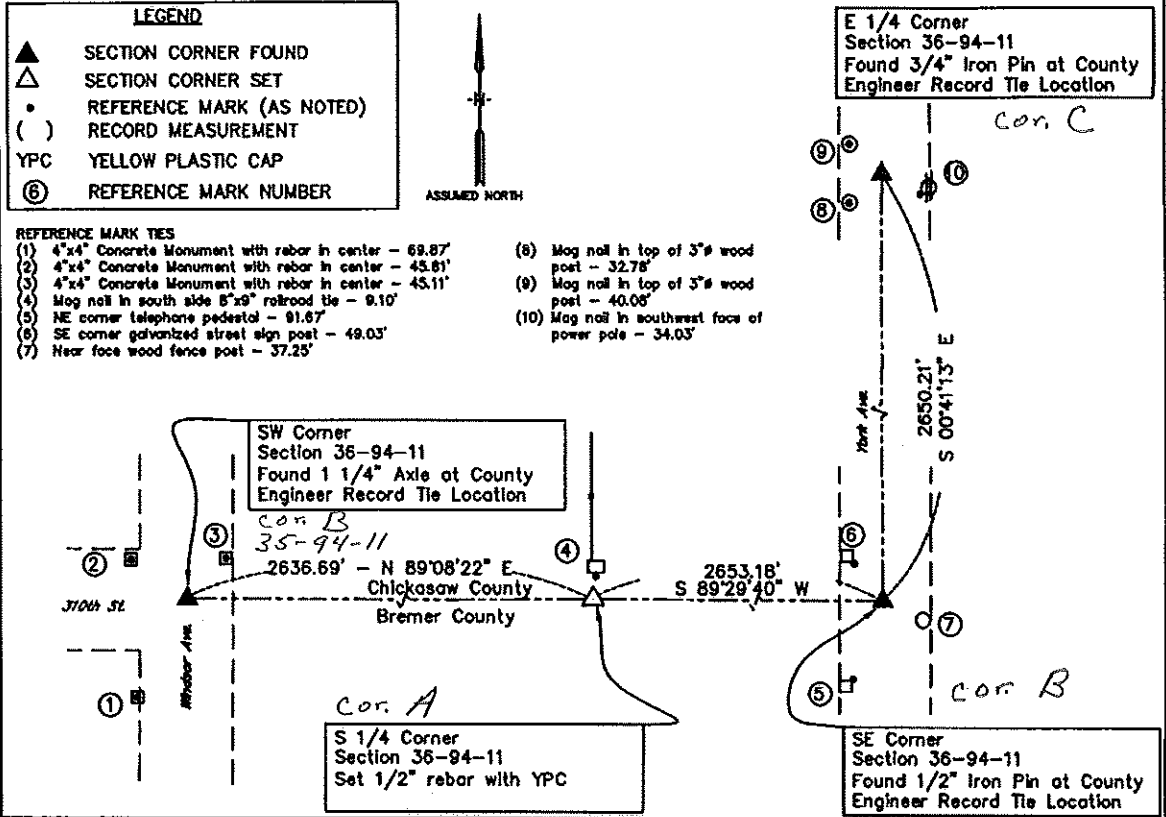
3rd OF

Land Survey Monuments situated in Section 36, Township 94N, Range 11W, of the Fifth Principal Meridian,
 Chickasaw County, Iowa. Previously recorded in Doc. # N/A In County Recorder's Office.

Monument Description and Remarks: SW Corner: Found 1 1/4" axle 3" +/- deep at County Engineer Record Location. No corner tie certificate on file, re-tied.
S 1/4 Corner: Used metal locator and dug for iron pin and found none. Set 1/2" rebar with YPC at intersection of fence line to the north and line extended between SW Corner and intersection of lines created by intersecting corners of bridge located 1230 feet west of S 1/4 Corner. No monument found and no corner tie certificate on file, re-tied.
SE Corner: Found 1/2" iron pin 4" deep +/- at County Engineer Record Location. No ties remaining and no corner tie certificate on file, re-tied.
E 1/4 Corner: Found 3/4" iron pin 8" deep +/- at County Engineer Record Location. No ties remaining and no corner tie certificate on file, re-tied.

PLAN - VIEW

(Show a minimum of three reference ties to durable physical conditions that will enable recovery of the corner.)



I hereby certify that this Land Surveying document was prepared and the related survey work was performed by me or under my direct personal supervision and that I am a duly licensed Land Surveyor under the laws of the State of Iowa.

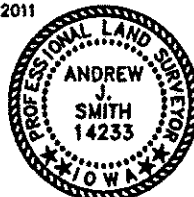
Andrew J. Smith 6/19/11
 Andrew J. Smith Date

License Number 14233
 My license renewal date is December 31, 2011



VEENSTRA & KIMM, INC.

PROJECT NO.: Cohoy - 36-94-11
 SHEET 1 OF 1



LAND CORNER TO BE INDEXED

Corners	Sections	Twp	Range
SW	36	94N	11W
S 1/4	36	94N	11W
SE	36	94N	11W
E 1/4	36	94N	11W

