

SHIMAK SURVEYING, P.L.L.C., 3212 335th Street, Cresco, Iowa 52136 Phone (563) 379-8899

UNITED STATES PUBLIC LAND SURVEY CORNER CERTIFICATE

OF

Land Survey Monuments situated in Section 26, Township 94 North, Range 11 West of the Fifth Principal Meridian, Chickasaw County, Iowa.

Previously recorded in 1.) 2011-1027 2.) Deed Bk. 186, Pg. 249 in County Recorder's Office.
 (book, page, document number, etc.)

(Show reason for preparing this certificate, the evidence and detailed procedures used in establishing the corner positions and monumentation found or placed.)

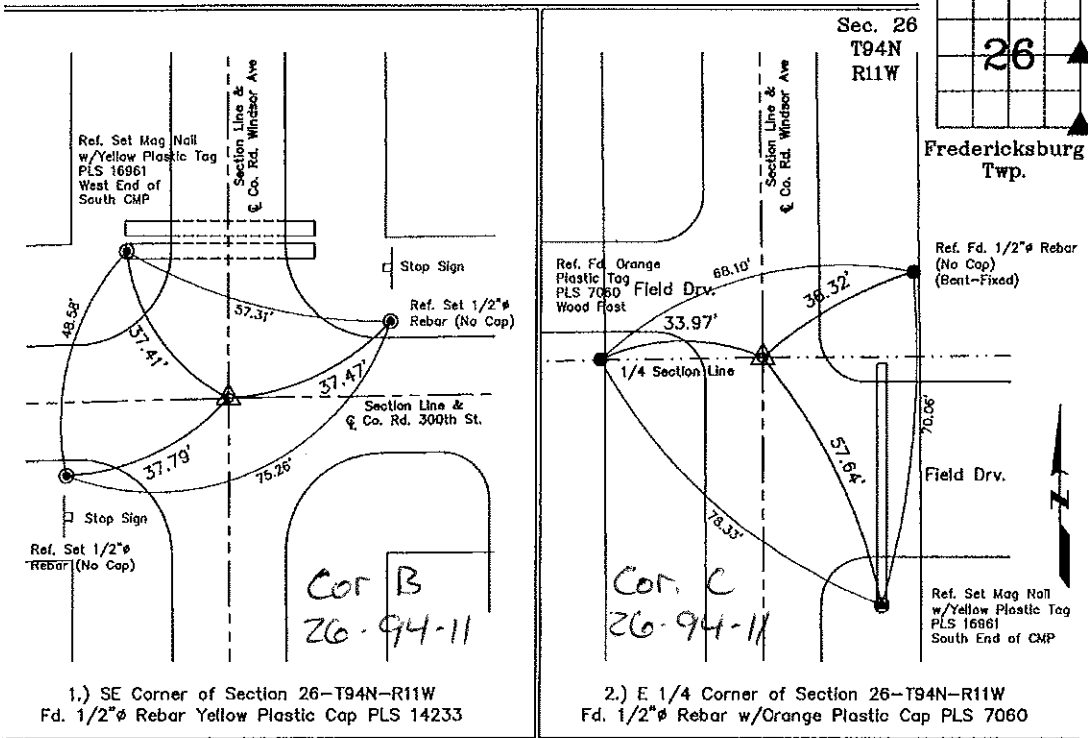
Monument Description and Remarks: 1.) **SE Corner of Section 26-T94N-R11W:**
 Fd. 1/2"Ø Rebar. w/Yellow Plastic Cap PLS 14233. From Previous Section Corner Certificate.

One Tie is missing. Ties were Placed as Shown Below.

2.) **E 1/4 Corner of Section 26-T94N-R11W:**
 Fd. 1/2"Ø Rebar w/Orange Plastic Cap PLS 7060. From Previous Section Corner Certificate.

All Ties are missing. Ties were Placed as Shown Below.

PLAN - VIEW



I hereby certify that this land surveying document was prepared and the related survey work was performed by me or under my direct personal supervision and that I am a duly licensed Land Surveyor under the laws of the State of Iowa.

Michael J. Shimak 5-31-2018
 Michael J. Shimak Date:
 License number 16961
 My license renewal date is December 31, 2019.
 Sheets covered by this seal: Sheet P1

List Corners to be Indexed

Corners	Section	Twp.	Range
1.) SE Corner	26	94N	11W
2.) E 1/4 Corner	26	94N	11W

Prepared By: Andrew J. Smith, Veenstra & Kimm, Inc. 2800 Fourth St. SW, Mason City, Iowa (641) 421-8008

UNITED STATES PUBLIC LAND SURVEY CORNER CERTIFICATE

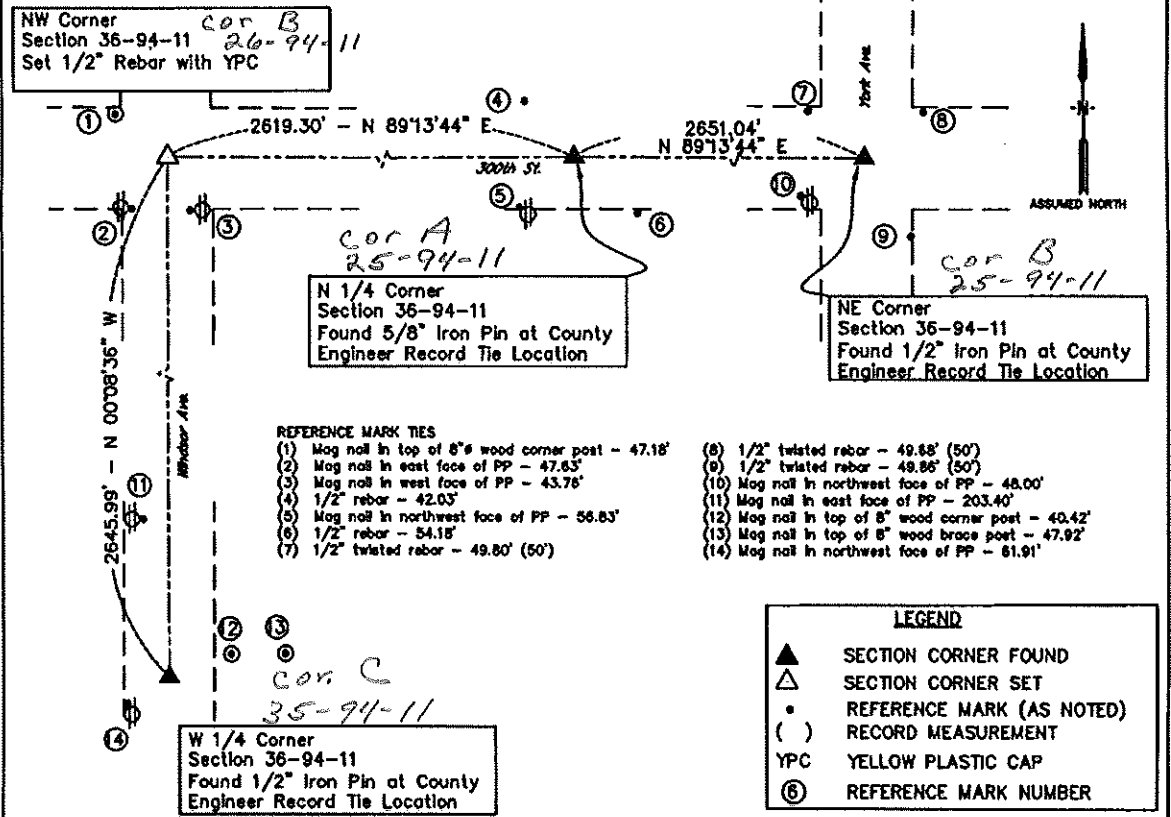
36 OF

Land Survey Monuments situated in Section 36, Township 94N, Range 11W, of the Fifth Principal Meridian,
 Chickasaw County, Iowa. Previously recorded in Doc. # N/A in County Recorder's Office.

Monument Description and Remarks: NW Corner: Dug and probed for stone, no monument found, no County Engineers Ties remaining, and no corner tie certificate on file. Set 1/2" iron rod with YPC at intersection of line extended between NE corner and N 1/4 corner and splitting existing fences to the south. Corner falls near centerline of roads north, south, east and west.
N 1/4 Corner: Found 5/8" iron pin 12" +/- deep at County Engineer Record Location. No ties remaining and no corner tie certificate on file, re-tied.
NE Corner: Found 1/2" iron pin at County Engineer Record Location. No corner tie certificate on file, re-tied.
W 1/4 Corner: Found 1/2" iron pin at County Engineer Record Location. No ties remaining and no corner tie certificate on file, re-tied.

PLAN - VIEW

(Show a minimum of three reference ties to durable physical conditions that will enable recovery of the corner.)

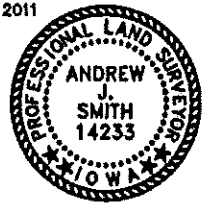


I hereby certify that this Land Surveying document was prepared and the related survey work was performed by me or under my direct personal supervision and that I am a duly licensed Land Surveyor under the laws of the State of Iowa.

Andrew J. Smith 6/14/11
 Andrew J. Smith Date

License Number 14233
 My license renewal date is December 31, 2011

V&K
VEENSTRA & KIMM, INC.
 PROJECT NO.: Cahoy - 36-94-11
 SHEET 1 OF 1



LAND CORNER TO BE INDEXED

Corners	Sections	Twp	Range
NW	36	94N	11W
N 1/4	36	94N	11W
NE	36	94N	11W
W 1/4	36	94N	11W

