



Prepared By / Return To: Fayette County Engineer, West Union, Iowa (563)-422-3552

UNITED STATES PUBLIC LAND SURVEY CORNER CERTIFICATE

OF
 Land Survey Monuments situated in Section 36, Township 94 North, Range 11 West
 of the Fifth Principal Meridian, Chickasaw County, Iowa.
 Previously recorded in (1) 2011-1027 (2) 2011-1028 in County Recorders's Office.
 (book, page, document number, etc.)

(Show reason for preparing this certificate, the evidence and detailed procedures used in establishing the corner positions and monumentation found or placed.)

Monument Description and Remarks: (1) NE Corner of Section 36-T94N-R11W:

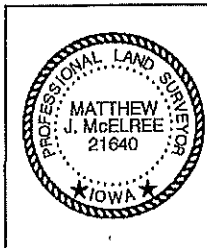
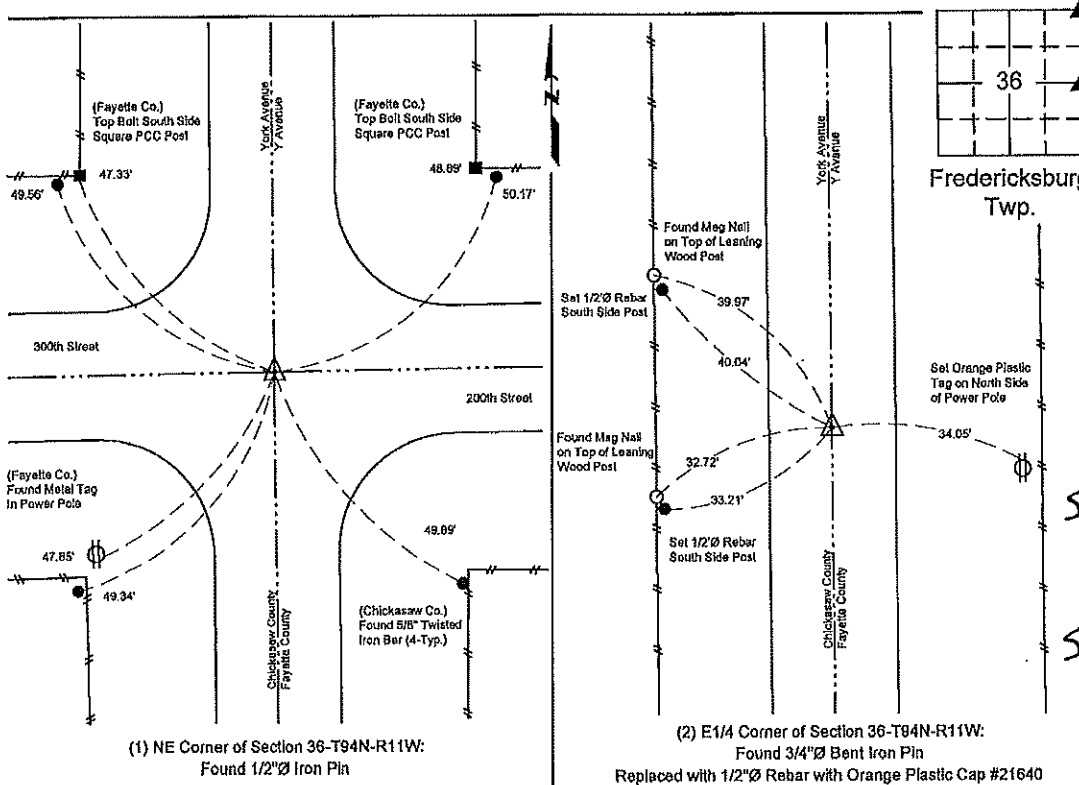
Found 1/2"Ø iron pin matching ties per Chickasaw County record 2011-1027, Chickasaw County Engineer's ties and Fayette County Engineer's ties in Field Book 63F, Page 70. Accepted found monument as the corner. Updating certificate to reflect ties on file for both Fayette and Chickasaw Counties.

(2) E1/4 Corner of Section 36-T94N-R11W:

Found 3/4"Ø bent iron pin matching closely to two remaining ties per Chickasaw County record 2011-1028. Replaced existing bent pin with 1/2"Ø rebar with orange plastic cap #21640. Updating certificate because the monument of record has changed and three new ties were added.

PLAN VIEW

Show a minimum of three reference ties to durable physical objects, relevant monuments and physical conditions that will enable recovery of the corner.



I hereby certify that this land surveying document was prepared and the related survey work was performed by me or under my direct personal supervision and that I am a duly licensed Land Surveyor under the laws of the State of Iowa.

Matthew J. McElree 3-15-21
 Date

Matthew J. McElree, P.L.S.
 License Number 21640
 My license renewal date is December 31, 2022.
 Sheets covered by this seal: This Sheet Only

List Corners to be Indexed			
Corners	Section	Twp.	Range
NE	36	94N	11W
E1/4	36	94N	11W