

Section 34-96-11
 As referred to in
 Engr. Trk. Book

FILED 2004 - 1352
 RECORDER'S OFFICE
 CHICKASAW COUNTY, IOWA
 2004 JUN 14 AM 9 30
 CINDY MESSERSMITH
 COUNTY RECORDER

TEKIPPE ENGINEERING, P.C., 128 South Vine Street, West Union, Iowa 52175 Phone (563) 422-6131

UNITED STATES PUBLIC LAND SURVEY CORNER CERTIFICATE

OF 96
 Land Survey Monuments situated in Section 3, Township 94 North, Range
11 West of the Fifth Principal Meridian, CHICKASAW County, Iowa.
 Previously recorded in none in County Recorder's Office.
(book, page, document number, etc.)

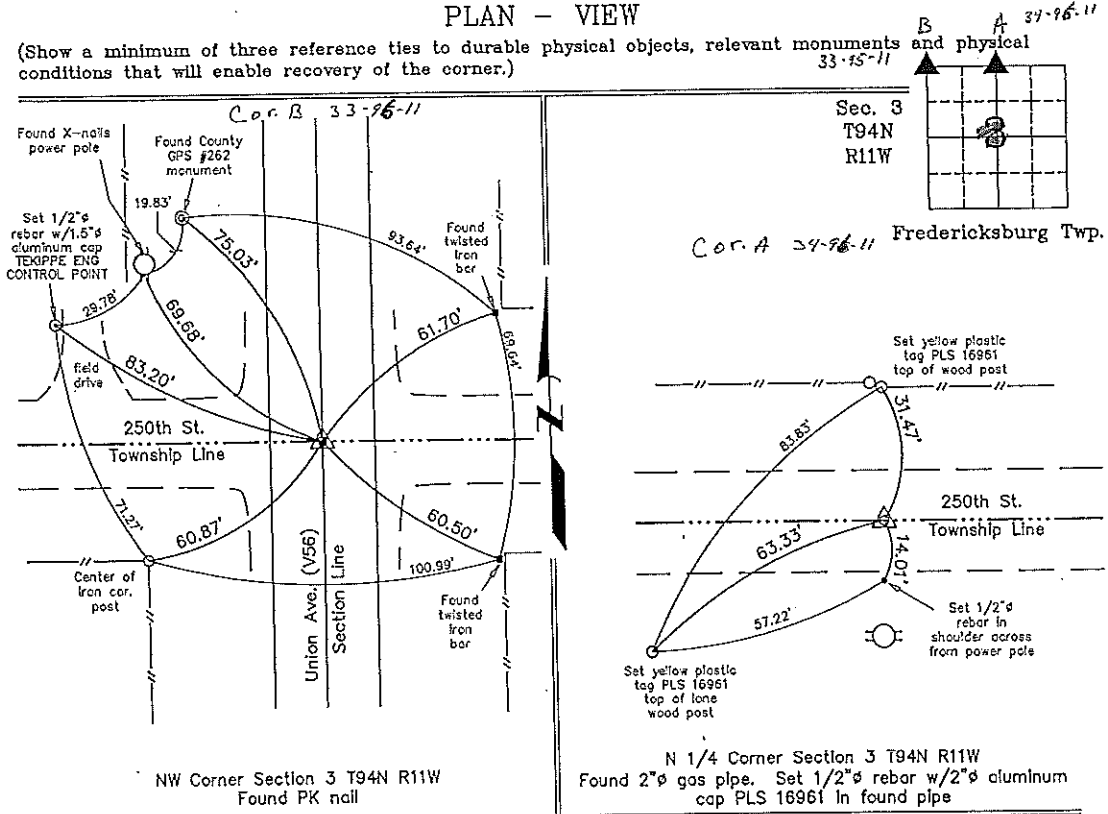
(Show reason for preparing this certificate, the evidence and detailed procedures used in establishing the corner positions and monumentation found or placed.)

Monument Description and Remarks: NW Corner Section 3 T94N R11W: Found PK nail with information obtained from the Chickasaw County Engineer's Office in Field Book Stapleton Twp., Section 33, Corner 'B'.

N 1/4 Corner Section 3 T94N R11W: Found 2" gas pipe with information obtained from the Chickasaw County Engineer's Office in Field Book Stapleton Twp., Section 34, Corner 'A'. Set 1/2" rebar w/2" aluminum cap PLS 16961 in found pipe.

PLAN - VIEW

(Show a minimum of three reference ties to durable physical objects, relevant monuments and physical conditions that will enable recovery of the corner.)



NW Corner Section 3 T94N R11W
 Found PK nail

N 1/4 Corner Section 3 T94N R11W
 Found 2" gas pipe. Set 1/2" rebar w/2" aluminum cap PLS 16961 in found pipe



I hereby certify that this land surveying document was prepared and the related survey work was performed by me or under my direct personal supervision and that I am a duly licensed Land Surveyor under the laws of the State of Iowa.
 Michael J. Shimak June 13, 2004
 Michael J. Shimak Date
 License number 16961
 My license renewal date is December 31, 2005.
 Sheets covered by this seal: Individual

List Corners to be Indexed			
Corners	Section	Twp.	Range
NW	3	94N	11W
N 1/4	3	94N	11W

X:\Section Corners\Sec. 03\3-94-11ac.dwg
 Project Number 04107.LS
 FB 46L PG. 3-5

COUNTY ENGINEER'S COPY