

Prepared by & Return to: Herold - Reicks Surveying, 10 East Main Street, New Hampton, IA 50653, Ph. 641-394-2725

UNITED STATES PUBLIC LAND SURVEY CORNER CERTIFICATE

Land Survey Monuments situated in Section 6, Township 94 North, Range 11 West of the Fifth Principal Meridian, Chickasaw County, Iowa. 1.) Previously recorded in Bk. 160, Pg. 419 in the County Recorder's office. 2.) Previously recorded in Bk. 160, Pg. 418 in the County Recorder's office.

This certificate is being prepared in compliance with Iowa Code Chapter 355.11 because:

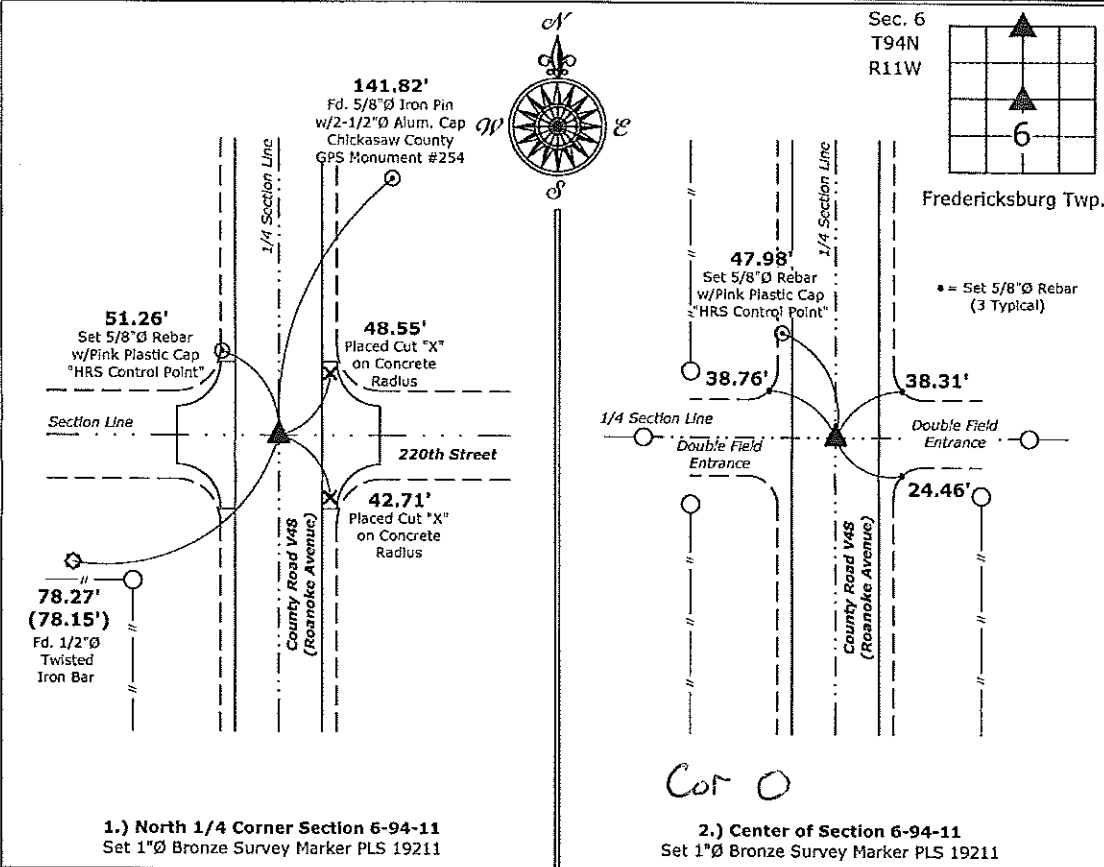
- There is no certificate on file for this corner.
- There are no longer three valid ties of record.
- There are changes to reference ties of record.
- There is change of monumentation of record.
- To clarify description of record monument (ties).

Monument Description and Remarks:

- 1.) North 1/4 Corner:** Set 1"Ø Bronze Survey Marker PLS 19211 at previous location (Found 1/2"Ø Iron Pin) with coordinates obtained prior to highway reconstruction, Project #STP-S-CO19(94)--5E-19.
- 2.) Center:** Set 1"Ø Bronze Survey Marker PLS 19211 at previous location (Found PK Nail) with coordinates obtained prior to highway reconstruction, Project #STP-S-CO19(94)--5E-19.

PLAN - VIEW

(Show a minimum of three reference ties to durable physical objects, relevant monuments and physical conditions that will enable recovery of the corner.)



1.) North 1/4 Corner Section 6-94-11
 Set 1"Ø Bronze Survey Marker PLS 19211

2.) Center of Section 6-94-11
 Set 1"Ø Bronze Survey Marker PLS 19211



I hereby certify that this land surveying document was prepared and the related survey work was performed by me or under my direct personal supervision and that I am a duly licensed Land Surveyor under the laws of the State of Iowa.

Kirk D. Reicks 7-29-15
 Kirk D. Reicks Date:
 License number 19211
 My license renewal date is December 31, 2016.
 Sheets covered by this seal: Individual sheet only

| List Corners to be Indexed | | | |
|----------------------------|---------|------|-------|
| Corners | Section | Twp. | Range |
| N 1/4 | 6 | 94 | 11 |
| CTR | 6 | 94 | 11 |

Project Number: 2015-001
 FB: Chickasaw County 7, Pg. 24