

FILED 2002-2-2469  
 RECORDER'S OFFICE  
 CHICKASAW COUNTY, IOWA  
*Dec 16 2002*  
 2002 OCT 16 AM 8 38  
 GIBBY MEUGERSMITH  
 COUNTY RECORDER

TeKIPPE ENGINEERING, P.C., 128 South Vine Street, West Union, Iowa 52175 Phone (563) 422-5131

UNITED STATES PUBLIC LAND SURVEY CORNER CERTIFICATE

OF

Land Survey Monuments situated in Section 7, Township 94 North, Range 11 West of the Fifth Principal Meridian, CHICKASAW County, Iowa.  
 Previously recorded in Deeds Book 148, Page 355 in County Recorder's Office.  
 (book, page, document number, etc.)

(Show reason for preparing this certificate, the evidence and detailed procedures used in establishing the corner positions and monumentation found or placed.)

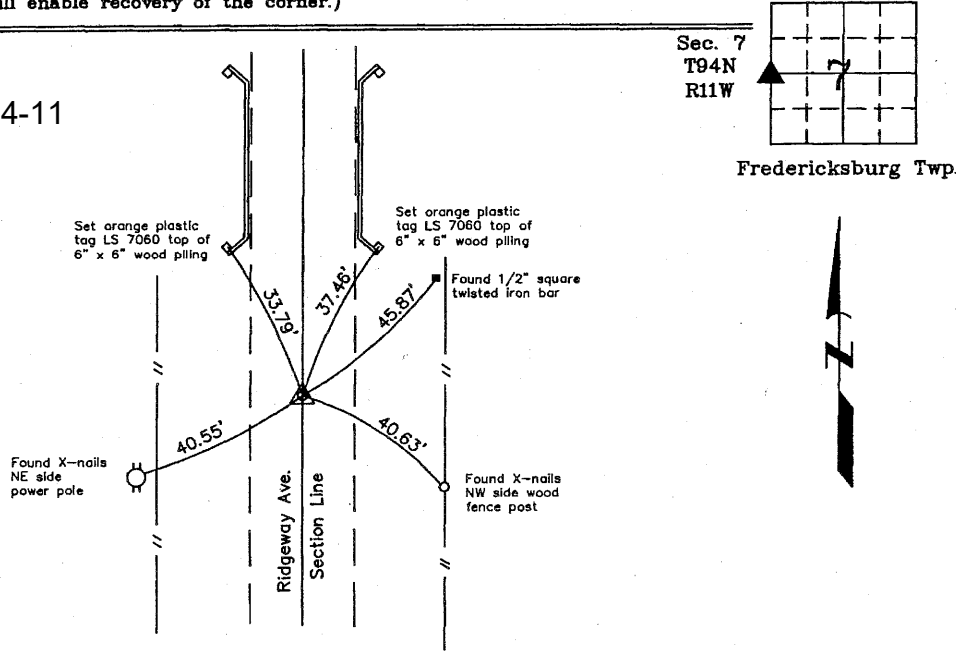
Monument Description and Remarks: W 1/4 Corner Section 7 T94N R11W: Found 1/2"Ø rebar w/orange plastic cap LS 7060, 3' deep, with information obtained from the previous Section Corner Certificate recorded in the Chickasaw County Recorder's Office January 15, 1992 in Deeds Book 148, Page 355. Set 1/2"Ø rebar w/2"Ø aluminum cap LS 7060 over previous monument.

PLAN - VIEW

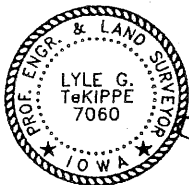
Project Number 02046.LS

(Show a minimum of three reference ties to durable physical objects, relevant monuments and physical conditions that will enable recovery of the corner.)

Cor. G 7-94-11



W 1/4 Corner Section 7 T94N R11W  
 Set 1/2"Ø rebar w/2"Ø aluminum cap LS 7060



I hereby certify that this land surveying document was prepared and the related survey work was performed by me or under my direct personal supervision and that I am a duly licensed Land Surveyor under the laws of the State of Iowa.

*Lyle G. TeKippe* 10-15-02  
 Lyle G. TeKippe Date  
 License number 7060  
 My license renewal date is December 31, 2002.  
 Sheets covered by this seal: Individual

List Corners to be Indexed

Corners	Section	Twp.	Range
W 1/4	7	94N	11W

X:\Section Corners\Sec. 07\7-94-11k.dwg