

UNITED STATES PUBLIC LAND SURVEY CORNER CERTIFICATE

OF

Land Survey Monuments situated in Section 7, Township 94 North, Range 11 West, of the Fifth Principal Meridian, CHICKASAW County, Iowa. Previously recorded in NONE in County Recorder's Office.

(book, page, document number, etc.)

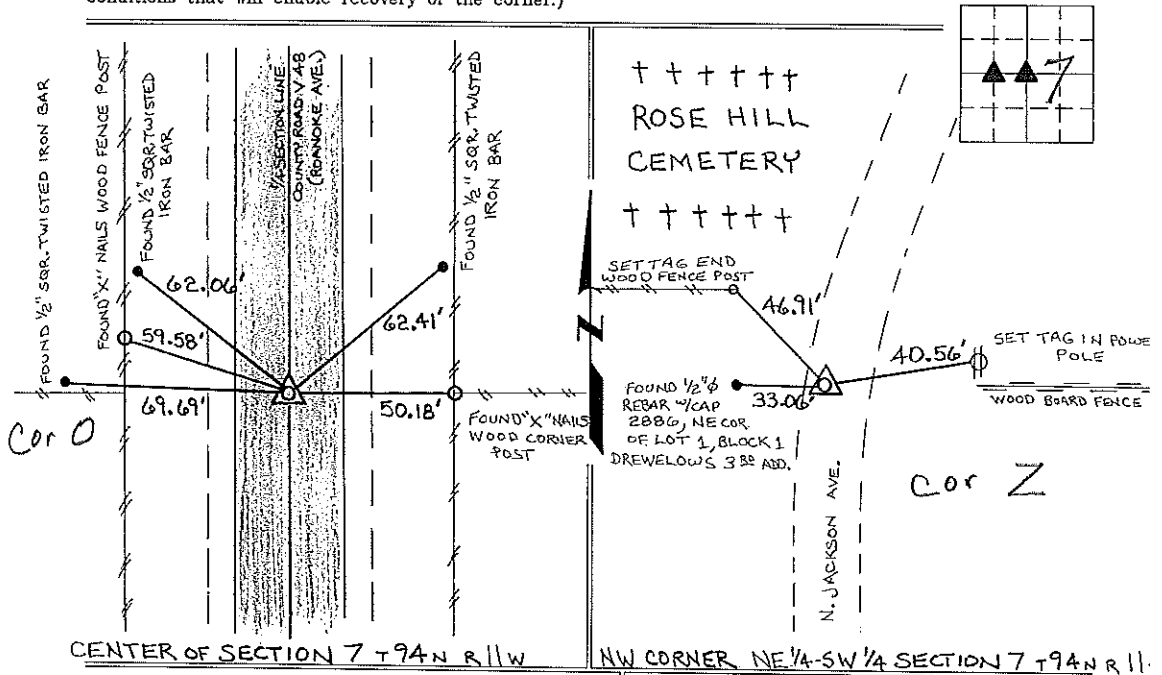
(Show reason for preparing this certificate, the evidence and detailed procedures used in establishing the corner positions and monumentation found or placed.)

Monument Description and Remarks: CENTER OF SECTION 7 T94N R11W: FOUND PK NAIL MATCHING TIES AND DESCRIPTION OBTAINED FROM THE COUNTY ENGINEERS OFFICE, IN FIELD BOOK "FREDERICKSBURG TWP. CORNERTIES".

NW CORNER NE 1/4-SW 1/4 SECTION 7 T94N R11W: FOUND A 3/4" Ø IRON PIN AS SHOWN ON A SURVEY AND PLAT MADE BY L.P. ERDMAN, RECORDED JUNE 29, 1993, IN BOOK 152, PAGE 232-239, ON FILE IN THE CHICKASAW COUNTY RECORDERS OFFICE.

PLAN - VIEW

(Show a minimum of three reference ties to durable physical objects, relevant monuments and physical conditions that will enable recovery of the corner.)



I hereby certify that the survey work was completed and this certificate was prepared by me or under my direct personal supervision and that I am a duly registered land surveyor under the laws of the state of Iowa.

Signature: Lyle G. TeKippe
Lyle G. TeKippe

Date: 4-5-96 Reg. No. 7080
My Registration Renewal Date is December 31, 1996

Seal



Corners	Section	Twp.	Range
CENTER	7	94N	11W
Cor 0	7-94-11		
NW-NE-SW	7	94N	11W
Cor 2	7-94-11		

*Placed in the Book
4/29/96*