

Prepared by & Return to: Herold - Reicks Surveying, 10 East Main Street, New Hampton, IA 50659, Ph. 641-394-2725

UNITED STATES PUBLIC LAND SURVEY CORNER CERTIFICATE

Land Survey Monuments situated in Section **7**, Township **94** North, Range **11** West of the Fifth Principal Meridian, **Chickasaw** County, Iowa. **1.)** Previously recorded in Bk. 149, Pg. 462 in the County Recorder's office. **2.)** Previously recorded in Bk. 160, Pg. 386 in the County Recorder's office.

This certificate is being prepared in compliance with Iowa Code Chapter 355.11 because:

- There is no certificate on file for this corner.
- There are no longer three valid ties of record.
- There are changes to reference ties of record.
- 1 & 2** There is change of monumentation of record.
- To clarify description of record monument (ties).

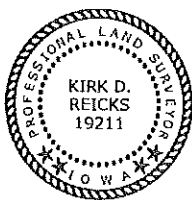
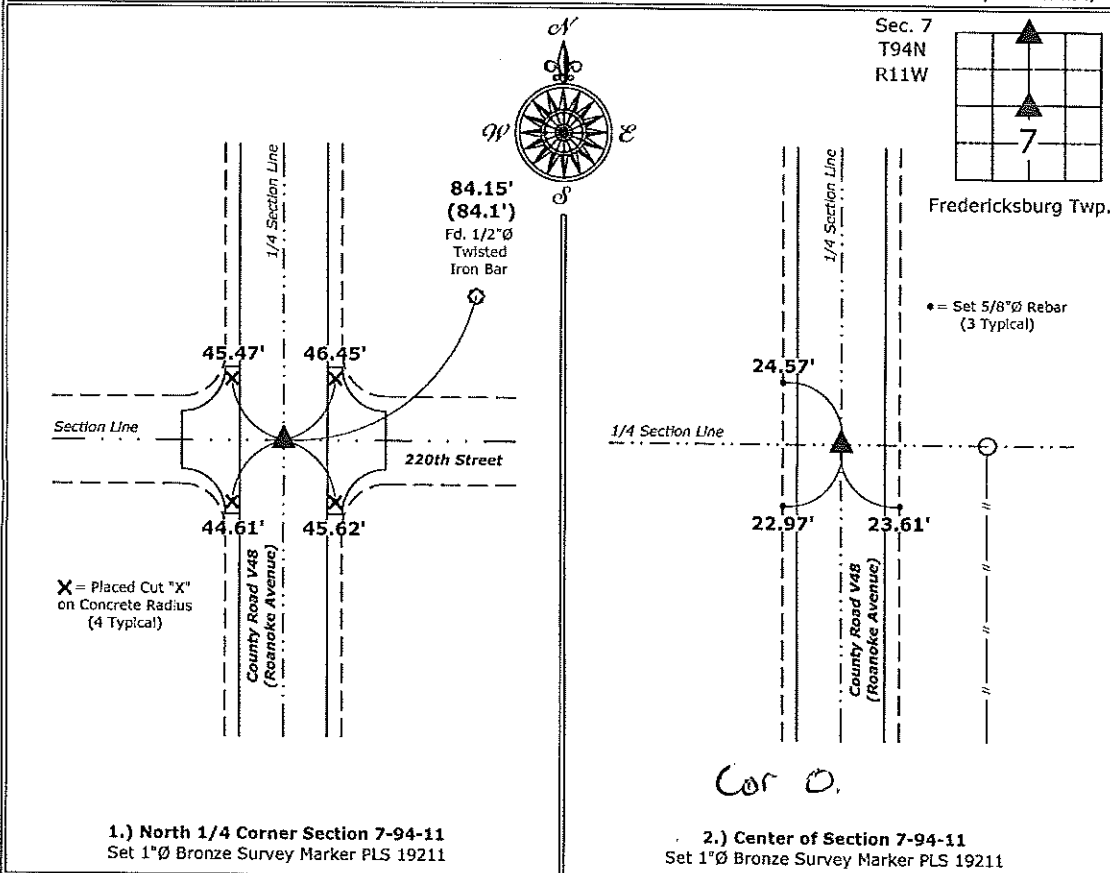
Monument Description and Remarks:

1.) North 1/4 Corner: Set 1"Ø Bronze Survey Marker PLS 19211 at previous location (Found PK Nail) with coordinates obtained prior to highway reconstruction, Project #STP-S-CO19(94)--5E-19.

2.) Center: Set 1"Ø Bronze Survey Marker PLS 19211 at previous location (Found PK Nail) with coordinates obtained prior to highway reconstruction, Project #STP-S-CO19(94)--5E-19.

PLAN - VIEW

(Show a minimum of three reference ties to durable physical objects, relevant monuments and physical conditions that will enable recovery of the corner.)



I hereby certify that this land surveying document was prepared and the related survey work was performed by me or under my direct personal supervision and that I am a duly licensed Land Surveyor under the laws of the State of Iowa.

Kirk D. Reicks 7-29-15
 Kirk D. Reicks Date:

License number 19211
 My license renewal date is December 31, 2016.
 Sheets covered by this seal: Individual sheet only

List Corners to be Indexed			
Corners	Section	Twp.	Range
N 1/4	7	94	11
CTR	7	94	11

Project Number: 2015-001
 FB: Chickasaw County 7, Pg. 24

DOCUMENT No. **02534** FILED FOR RECORD THE 19th DAY OF June 1992 AT 8:51 P.M. BY Mary C. Murray Recorder
 RECORDING FEE \$ 5.00 O'CLOCK A.M. BOOK 149 DEED PAGE 462 BY MARY C. MURRAY Deputy
 TRANSFER FEE \$ _____ SLSI 9-90

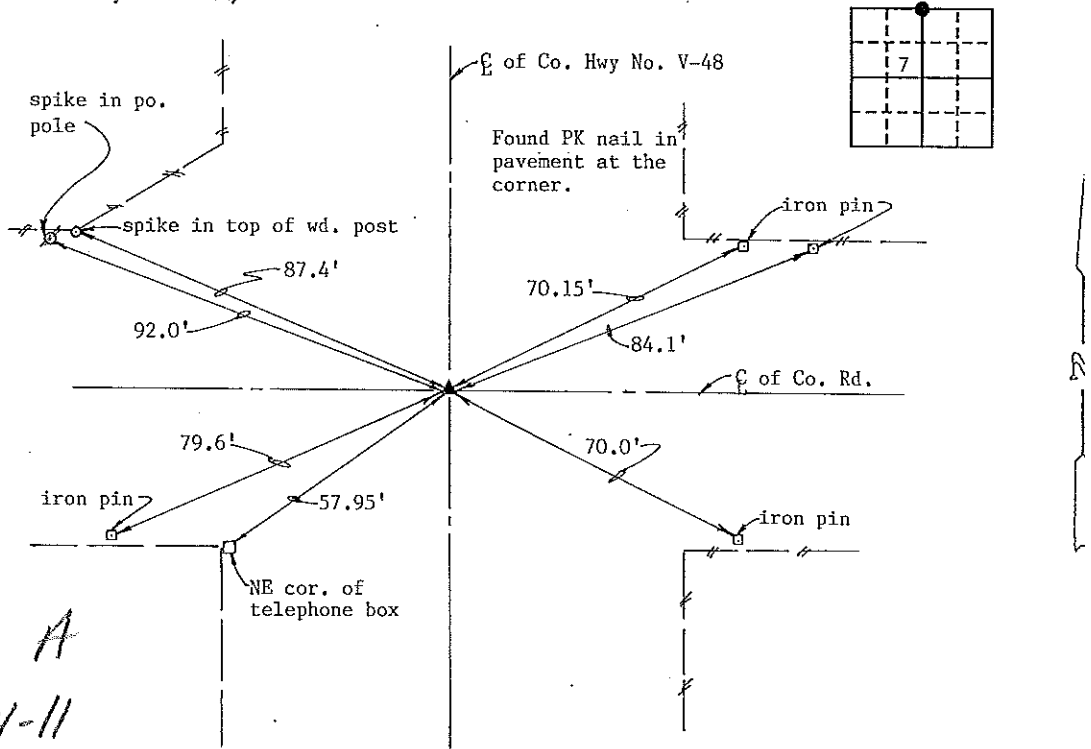
UNITED STATES PUBLIC LAND SURVEY CORNER CERTIFICATE

Section 6-94-11
 As referred to in
 Engg. Tie Book

OF 6
 Land Survey Monuments situated in Section 7, Township 94 North, Range 11 West, of the Fifth Principal Meridian, Chickasaw County, Iowa.
 Previously recorded in no corner certificate on file in County Recorder's Office.
 (Show reason for preparing this certificate, the evidence and detailed procedures used in establishing the corner positions and monumentation found or placed.)
 Monument Description and Remarks: Found PK nail in pavement at the corner.

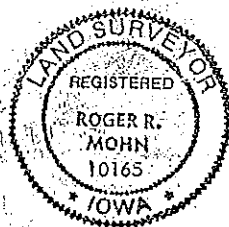
PLAN - VIEW

(Show a minimum of three reference ties to durable physical objects, relevant monuments and physical conditions that will enable recovery of the corner.)



I hereby certify that the survey work was completed and this certificate was prepared by me or under my direct personal supervision and that I am a duly registered land surveyor under the laws of the state of Iowa.

Signature: Roger R. Mohn
 Name typed or printed: Roger R. Mohn
 Date: June 15, 1992 Reg. No. 10165



SEAL 21

Corners	List Corners to be Indexed		
	Section	Twp	Range
North 1/4 Cor.	7	94N	11W

Corner A
 6-94-11
 Placed in Tie Book
 6/15/92