



Prepared by: Erdman Engineering, P.C., 708 Commerce Drive, P.O. Box 246, Decorah, Iowa, (563)382-4194

UNITED STATES PUBLIC LAND SURVEY CORNER CERTIFICATE  
 OF

Land Survey Monuments situated in Section 9, Township 94 North, Range 11 West, of the Fifth Principal Meridian, Chickasaw County, Iowa, Previously recorded in does not apply in the County Recorder's Office.

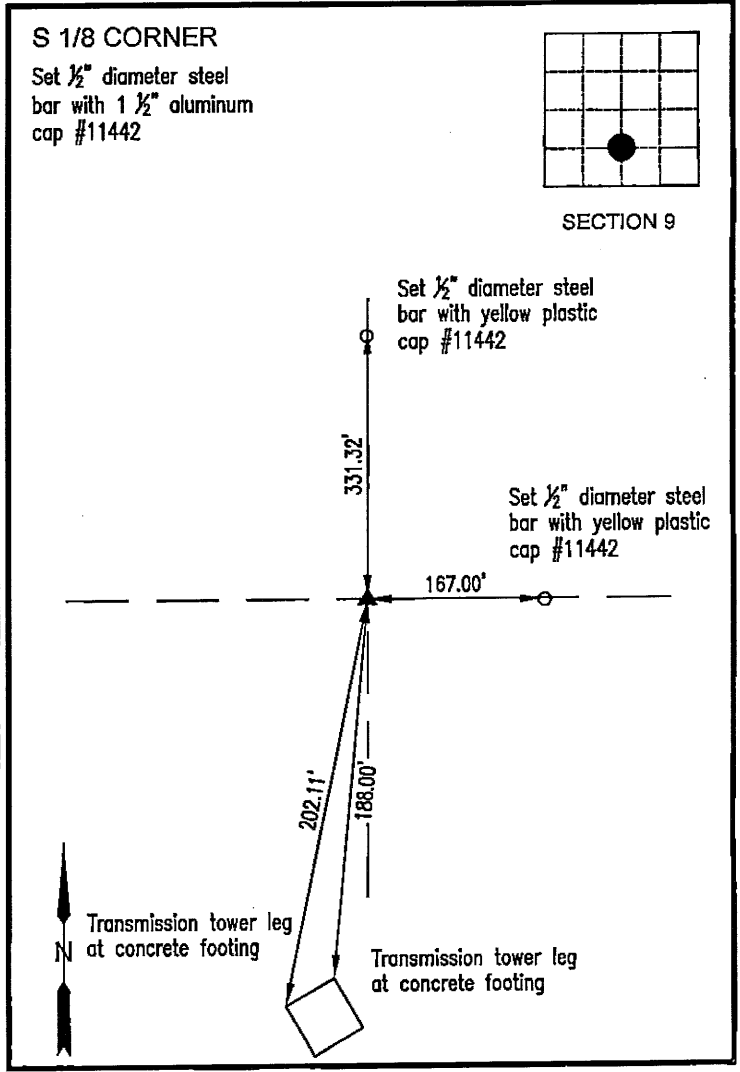
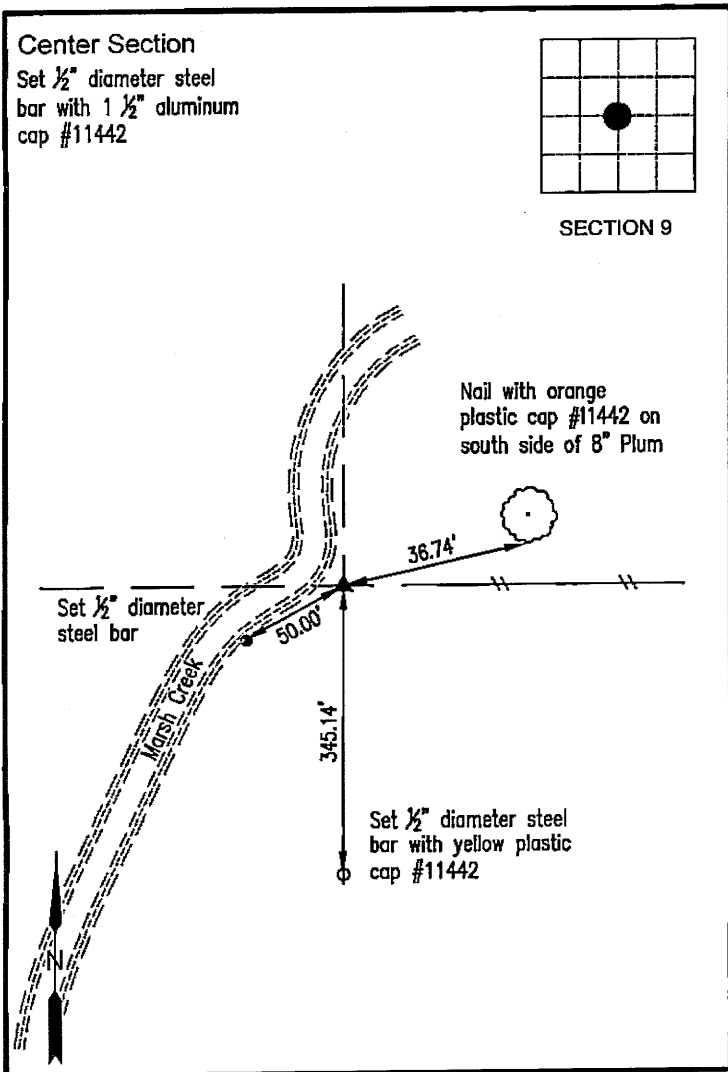
Monument Description and Remarks:

This certificate is prepared in accordance with Section 355.11 of the Code of Iowa. No previous certificates have been filed for these corner locations.

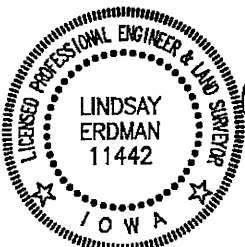
**Center Section:** We found no record of the Center Section being set. We found no evidence of a monument in the field other than an existing fence line running east and west. We found the N 1/4 Corner, S 1/4 Corner and W 1/4 Corner. We reset the E 1/4 Corner. We computed the location of the Center Section at the intersection of the lines from the opposite quarter corners. This location was ±8' south of the existing fence line running east and west. We set a 1/2" diameter steel bar with 1 1/2" aluminum cap #11442 on line between the N 1/4 Corner and the S 1/4 Corner and in line with the fence line running east and west as the Center of Section 9. Township 94 North, Range 11 West.

**S 1/8 Corner:** We found no record of the S 1/8 Corner being set. We found no evidence of a monument in the field. We found the S 1/4 Corner and set the Center Section. We set a 1/2" diameter steel bar with 1 1/2" aluminum cap #11442 on line and midway between the S 1/4 Corner and the Center Section as the S 1/8 Corner of Section 9. Township 94 North, Range 11 West.

PLAN-VIEW  
 (NOT TO SCALE)



I hereby certify that this land surveying document was prepared and the related survey work was performed by me or under my direct personal supervision and that I am a duly licensed Land Surveyor under the laws of the State of Iowa.



*Lindsay Erdman* 1/23/23  
 Date

Lindsay Erdman, P.E. & P.L.S.  
 Licensed Professional Land Surveyor  
 Iowa License Number 11442  
 My License renewal date is December 31, 2024  
 Pages or sheets covered by this seal: THIS SHEET ONLY

List Corner(s) to be Indexed

Corner(s)	Section	Township	Range
C.S.	9	94N	11W
S 1/8	9	94N	11W

**ERDMAN ENGINEERING, P.C.**

CIVIL ENGINEERING & LAND SURVEYING  
 Decorah, Iowa

Prepared by: Erdman Engineering, P.C., 708 Commerce Drive, P.O. Box 246, Decorah, Iowa, (563)382-4194

UNITED STATES PUBLIC LAND SURVEY CORNER CERTIFICATE  
 OF

Land Survey Monuments situated in Section 9, Township 94 North, Range 11 West, of the Fifth Principal Meridian, Chickasaw County, Iowa, Previously recorded in does not apply in the County Recorder's Office.

Monument Description and Remarks:

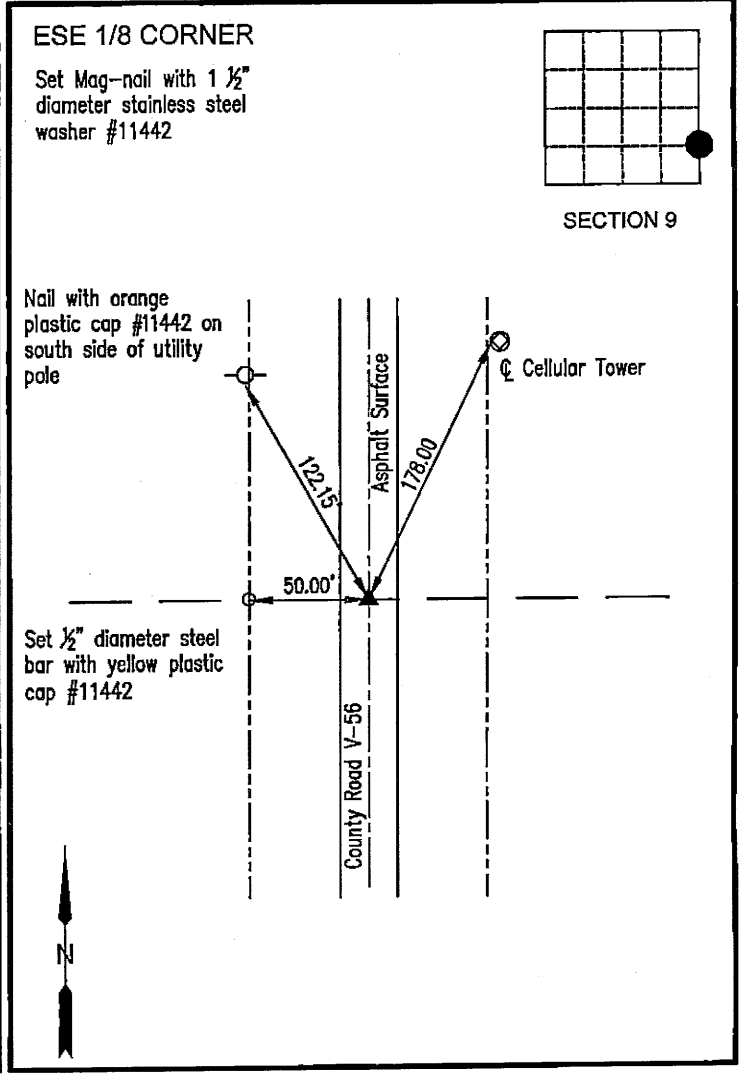
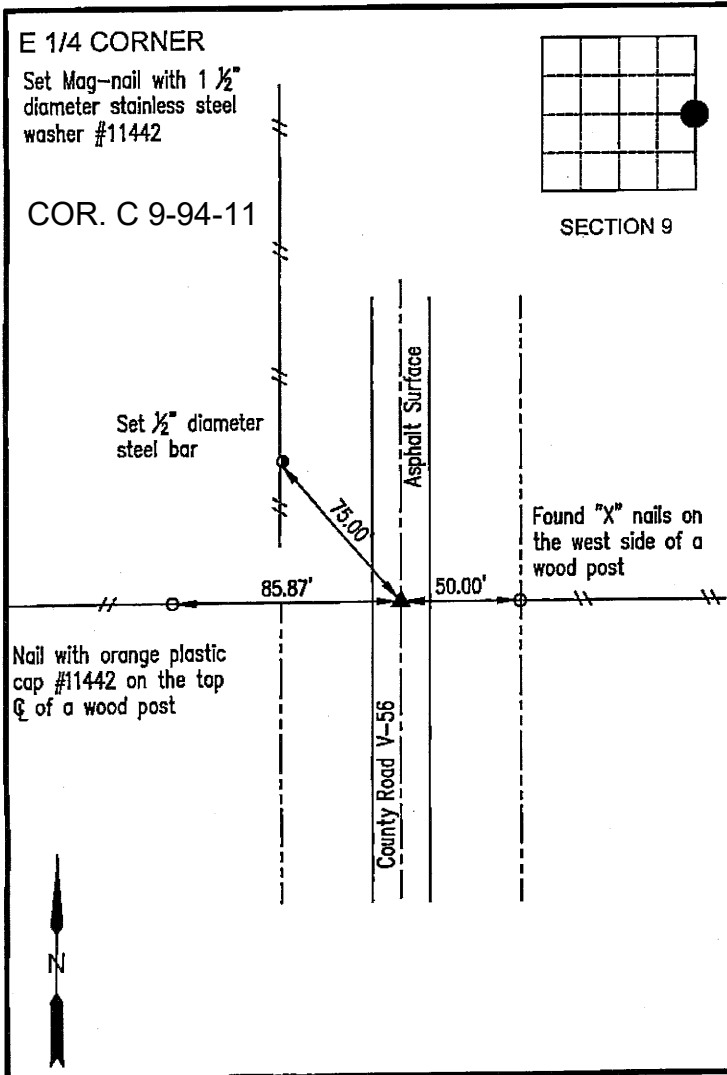
This certificate is prepared in accordance with Section 355.11 of the Code of Iowa. No previous certificates have been filed for these corner locations.

**E 1/4 Corner:** Chickasaw County Engineer's Reference Ties show that a P.K. nail was set and retied in 1983 to replace the nail that was found in 1979. We searched for the tie markers previously set. We did not find any as they appear to have been removed. We made a magnetic locator search of a ± 10' diameter area at the centerline of the county road and in line with the fence line running east and west. We did not find the monument as it appears to have been removed. We set a Mag-nail with 1 1/2" diameter stainless steel washer #11442 at the center of the 100' wide county road right-of-way and in line with the fence lines running east and west as the E 1/4 Corner of Section 9, Township 94 North, Range 11 West.

**ESE 1/8 Corner:** We found no record of the ESE 1/8 Corner being set. We found no evidence of a monument in the field other than the county road. We found the SE Corner and reset the E 1/4 Corner. We set a Mag-nail with 1 1/2" diameter stainless steel washer #11442 on line and midway between the SE corner and the E 1/4 Corner as the ESE 1/8 Corner of Section 9, Township 94 North, Range 11 West.

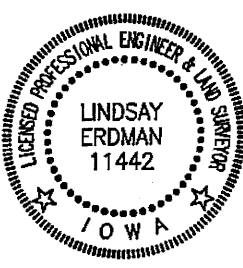
PLAN-VIEW

(NOT TO SCALE)



I hereby certify that this land surveying document was prepared and the related survey work was performed by me or under my direct personal supervision and that I am a duly licensed Land Surveyor under the laws of the State of Iowa.

*Lindsay Erdman* 1/23/23  
 Date  
 Lindsay Erdman, P.E. & P.L.S.  
 Licensed Professional Land Surveyor  
 Iowa License Number 11442  
 My License renewal date is December 31, 2024  
 Pages or sheets covered by this seal: THIS SHEET ONLY



List Corner(s) to be Indexed			
Corner(s)	Section	Township	Range
E 1/4	9	94N	11W
ESE 1/8	9	94N	11W

**ERDMAN ENGINEERING, P.C.**  
 CIVIL ENGINEERING & LAND SURVEYING  
 Decorah, Iowa