

UNITED STATES PUBLIC LAND SURVEY CORNER CERTIFICATE

OF

Land Survey Monuments situated in Section 4, Township 94 North, Range 11 West, of the Fifth Principal Meridian, CHICKASAW County, Iowa.
 Previously recorded in NONE in County Recorder's Office.
(book, page, document number, etc.)

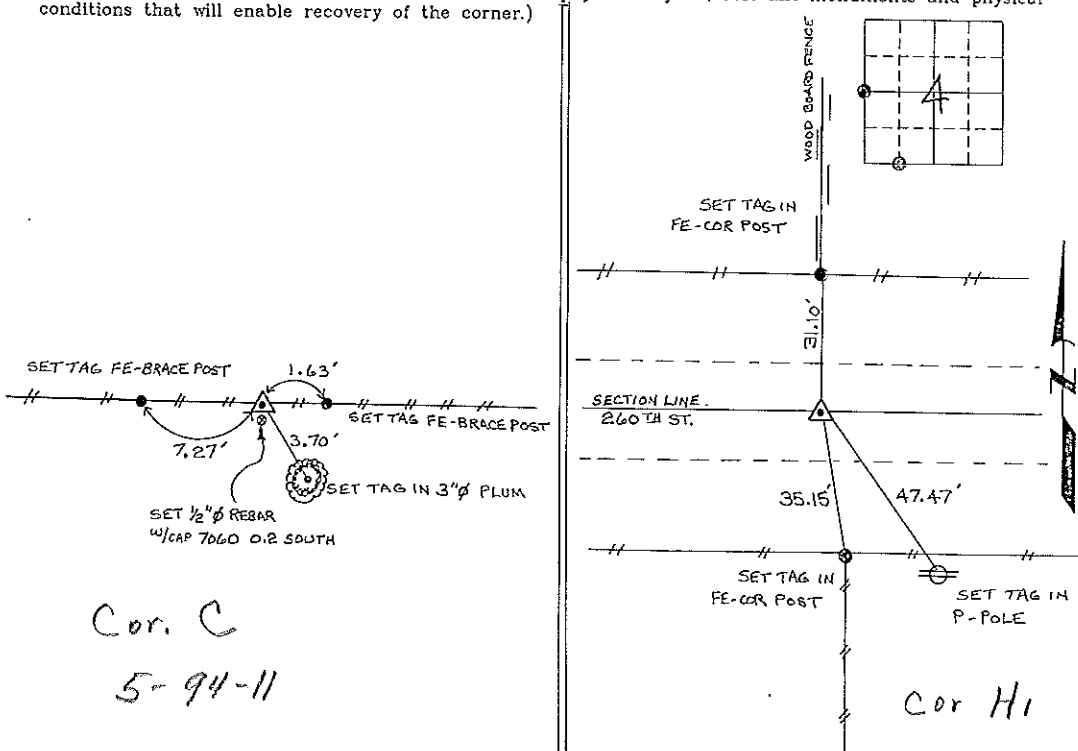
(Show reason for preparing this certificate, the evidence and detailed procedures used in establishing the corner positions and monumentation found or placed.)

Monument Description and Remarks: W 1/4 CORNER SECTION 4 T 94N R 11W:
FOUND 12" APPROX. Ø x 3" THICK GRANITE STONE STANDING ON END 10" DEEP AND 1.6 FEET
WEST OF A FENCE BRACE POST ON A E-W FENCE LINE, SET 1/2" Ø REBAR 1/4 CAP 7060 0.2 SOUTH.

SW CORNER SE 1/4 - SW 1/4 SECTION 4 T 94N R 11W: SET 1/2" Ø REBAR 1/4 CAP 7060, EQUADISTANT
AND ON LINE BETWEEN THE SW CORNER AND THE S 1/4 CORNER.

PLAN - VIEW

(Show a minimum of three reference ties to durable physical objects, relevant monuments and physical conditions that will enable recovery of the corner.)



Cor. C
5-94-11

Cor H1

W 1/4 CORNER SECTION 4 T 94N R 11W

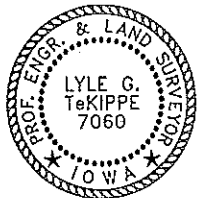
SW COR SE 1/4 - SW 1/4 SECTION 4 T 94N R 11W

I hereby certify that the survey work was completed and this certificate was prepared by me or under my direct personal supervision and that I am a duly registered land surveyor under the laws of the state of Iowa.

Signature: Lyle G. TeKippe
 Lyle G. TeKippe

Date: 8-22-95 Reg. No. 7080
 My Registration Renewal Date is December 31, 1998

Seal



List Corners to be Indexed

Corners	Section	Twp.	Range
W 1/4	4	94N	11W
Cor C	5-94-11		
SW COR SE-SW A	A	94N	11W
Cor H1	4-94-11		

Placed in Tie Box 9/1/95

"County Engineer's Copy"