

UNITED STATES PUBLIC LAND SURVEY CORNER CERTIFICATE

OF

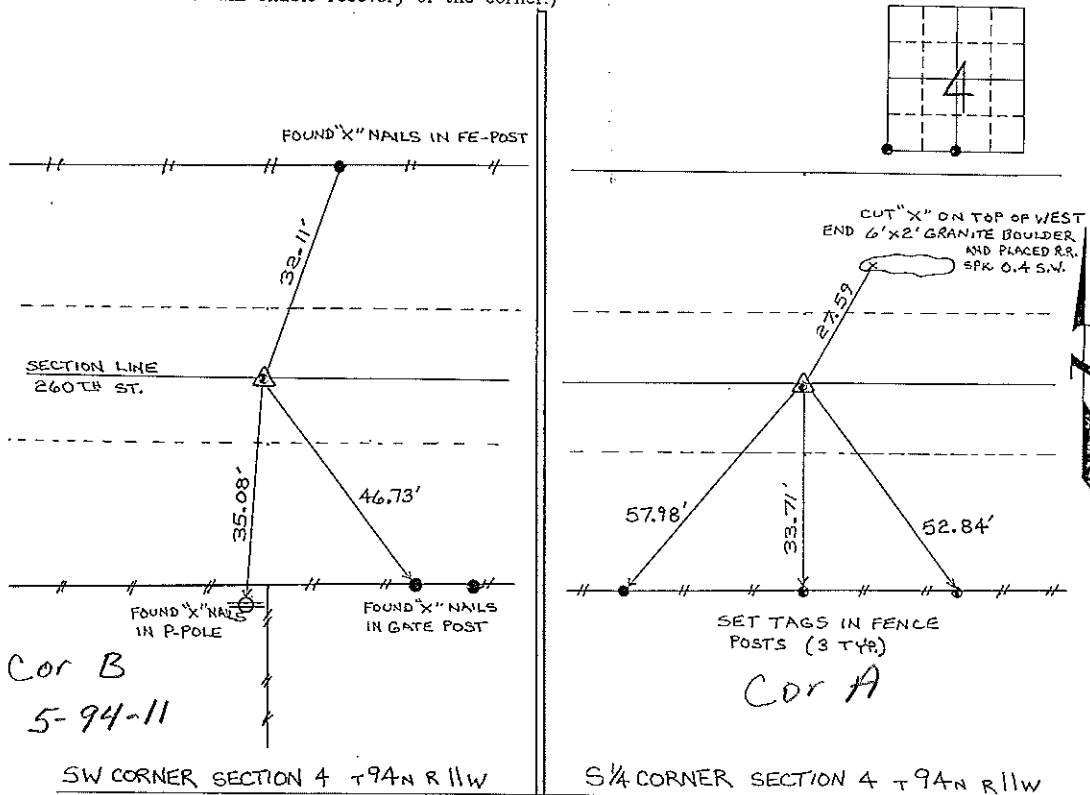
Land Survey Monuments situated in Section 4, Township 94 North, Range 11 West, of the Fifth Principal Meridian, CHICKASAW County, Iowa.
 Previously recorded in NONE in County Recorder's Office.
(book, page, document number, etc.)

(Show reason for preparing this certificate, the evidence and detailed procedures used in establishing the corner positions and monumentation found or placed.)

Monument Description and Remarks: SW CORNER SECTION 4 T94N R11W: FOUND 1/2" SQUARE TWISTED IRON BAR @ C. OF 260TH ST. ON LINE WITH A SOUTH FENCE LINE, BAR WAS FOUND APPROX. 0.3 DEEP
S 1/4 CORNER SECTION 4 T94N R11W: FOUND 5/8" SQUARE TWISTED IRON BAR @ C. OF 260TH ST. BAR WAS FOUND APPROX. 0.5 DEEP

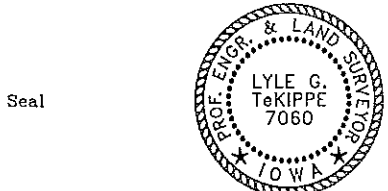
PLAN - VIEW

(Show a minimum of three reference ties to durable physical objects, relevant monuments and physical conditions that will enable recovery of the corner.)



I hereby certify that the survey work was completed and this certificate was prepared by me or under my direct personal supervision and that I am a duly registered land surveyor under the laws of the state of Iowa.

Signature: Lyle G. TeKippe
 Lyle G. TeKippe
 Date: 8-22-95 Reg. No. 7060
 My Registration Renewal Date is December 31, 1996



List Corners to be Indexed			
Corners	Section	Twp.	Range
SW COR.	4	94N	11W
Cor. B 5-94-11			
S 1/4 COR.	4	94N	11W
Cor. A 4-94-11			

*Placed in file
 book 9/1/95*

"County Engineer's Copy"