

# UNITED STATES PUBLIC LAND SURVEY CORNER CERTIFICATE

OF

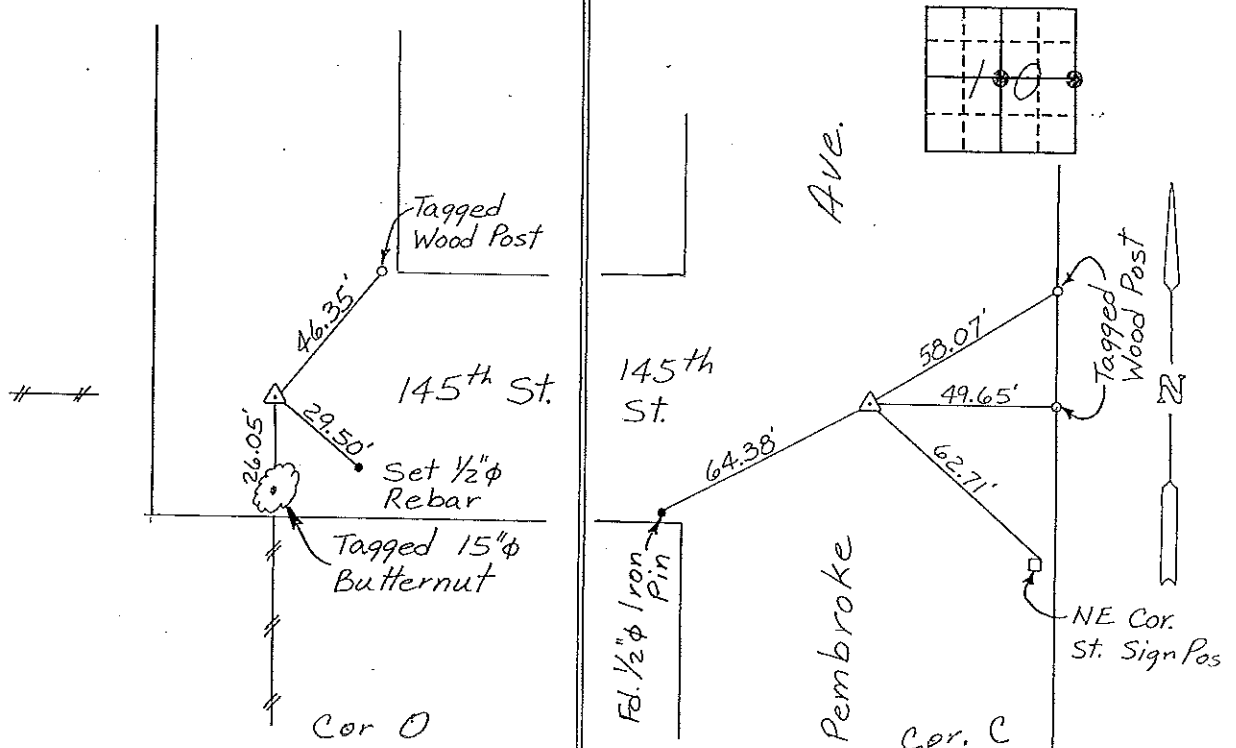
Land Survey Monuments situated in Section 10, Township 96 NORTH, Range 12 WEST, of the Fifth Principal Meridian, CHICKASAW County, Iowa. Previously recorded in NONE in County Recorder's Office.

(book, page, document number, etc.)  
(Show reason for preparing this certificate, the evidence and detailed procedures used in establishing the corner positions and monumentation found or placed.)

Monument Description and Remarks: Center of Section 10-T96N-R12W:  
Set 1/2" Rebar w/cap between W 1/4 Cor. & E 1/4 Cor., record distance from W 1/4 Cor. & in Line with 1/4 Sec. Line Fence South & E County Road North.  
E 1/4 Corner, Section 10-T96N-R12W: Found 1" Iron Pipe.

### PLAN - VIEW

(Show a minimum of three reference ties to durable physical objects, relevant monuments and physical conditions that will enable recovery of the corner.)



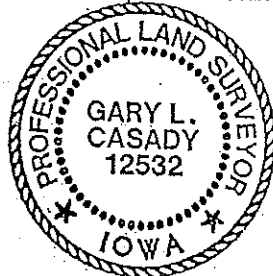
Center of Section 10-T96N-R12W E 1/4 Corner, Section 10-T96N-R12W

I hereby certify that the survey work was completed and this certificate was prepared by me or under my direct personal supervision and that I am a duly registered land surveyor under the laws of the state of Iowa.

Signature: Gary L. Casady  
Name typed or printed: Gary L. Casady

Date: 1-20-94 Reg. No. 12532  
My Registration Expires December 31, 1994

SEAL



Corners	List Corners to be Indexed		
	Section	Twp	Range
Center	10	96N	12W
W 1/4	10	96-96-12	
E 1/4	10	96N	12W
Cor C		96-12	

*Placed in file  
Book 2/94*