

UNITED STATES PUBLIC LAND SURVEY CORNER CERTIFICATE

OF

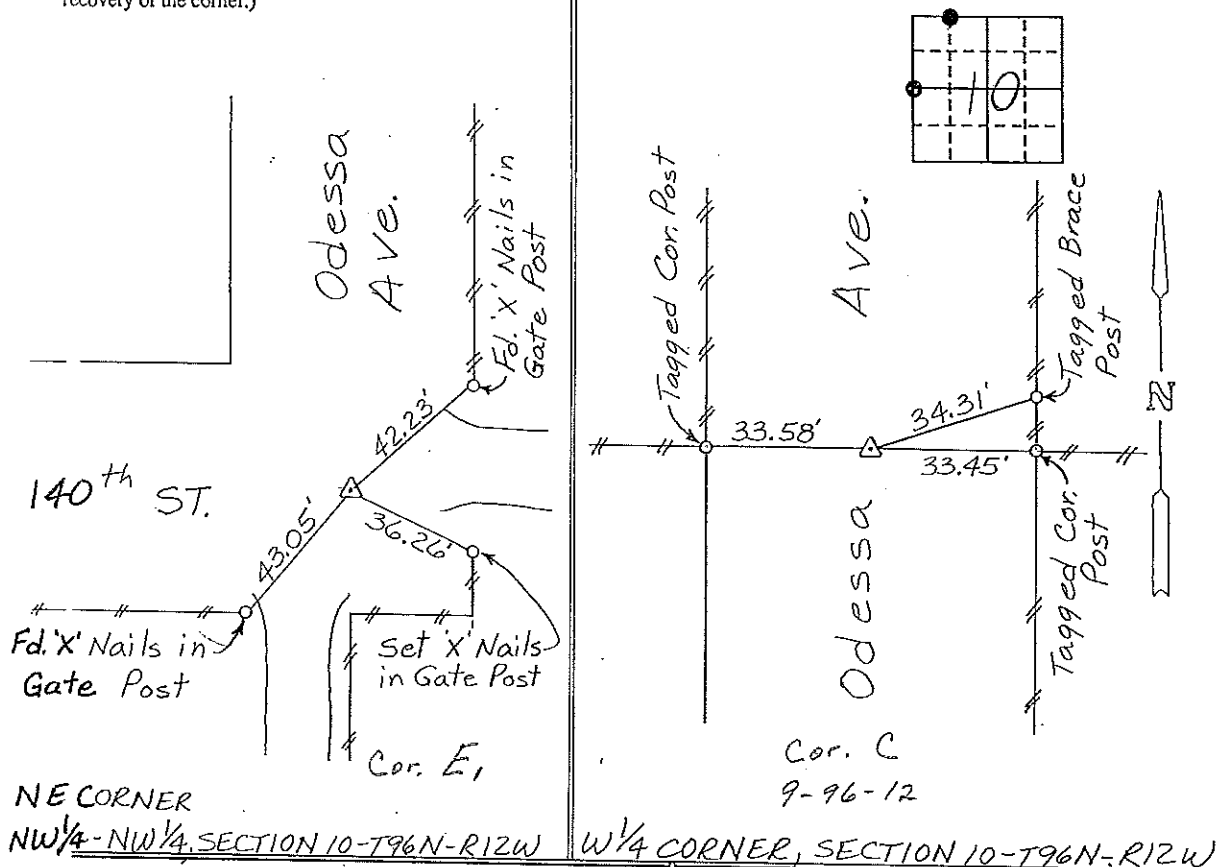
Land and Survey Monuments situated in Section 10, Township 96 NORTH, Range 12 WEST, of the Fifth Principal Meridian, CHICKASAW County, Iowa. Previously recorded in Deed Bk. 147, Pg. 475 - NONE in County Recorder's Office.

(Show reason for preparing this certificate, the evidence and detailed procedures used in establishing the corner positions and monumentation found or placed.)

Monument Description and Remarks: NE COR., NW 1/4 - NW 1/4, SECTION 10 - T96N - R12W: set 1/2" dia Rebar with cap from Ties & Record dist. from NW Corner of Section 10. No Mon. Found, reset. W 1/4 CORNER, SECTION 10 - T96N - R12W: Found 1/2" Twisted Iron Pin.

PLAN - VIEW

(Show a minimum of three reference ties to durable physical objects, relevant monuments and physical conditions that will enable recovery of the corner.)

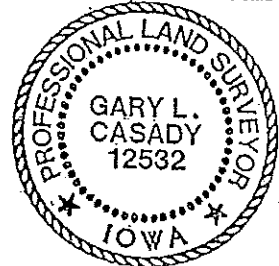


NE CORNER NW 1/4 - NW 1/4, SECTION 10 - T96N - R12W W 1/4 CORNER, SECTION 10 - T96N - R12W

I hereby certify that the survey work was completed and this certificate was prepared by me or under my direct personal supervision and that I am a duly registered land surveyor under the laws of the state of Iowa.

Signature: Gary L. Casady Name typed or printed: Gary L. Casady Date: 1-20-94 Reg. No. 12532 My Registration Expires December 31, 1994

Table with 4 columns: Corners, List Corners to be Indexed Section, Twp, Range. Rows include NE COR., NW 1/4 - NW 1/4, W 1/4, and Cor C.



SEAL

Placed in tie Book 2/93

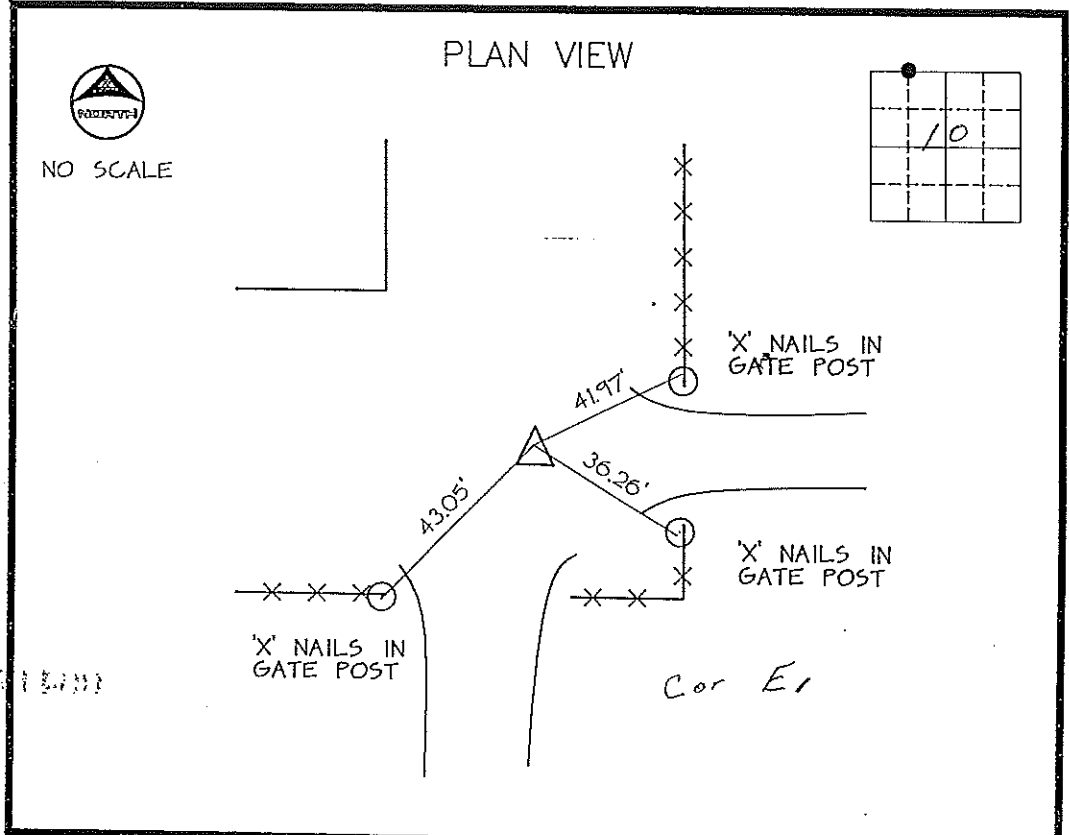
DOCUMENT No. **00417** FILED FOR RECORD THE **30th** DAY OF **August** 19**91** AT **9:46** O'CLOCK **A.** M. BOOK **147** Deed PAGE **475** STATE OF IOWA, CHICKASAW COUNTY
 RECORDING FEE \$ **5.00** By **Mary C. Murray** Recorder
 TRANSFER FEE \$ **---** MARY C. MURRAY Deputy

UNITED STATES PUBLIC LAND SURVEY CORNER CERTIFICATE

SECTION **10** , TOWNSHIP **96** , RANGE **12** OF THE 5TH. P.M.
 IN **CHICKASAW** COUNTY, IOWA
 CORNER: **NE COR NW1/4 NW1/4**
 DESCRIPTION AND REMARKS:

**FOUND BENT IRON PIN
 REPLACED W/ #5 REBAR W/ CAP**

PREVIOUSLY RECORDED IN BOOK _____, PAGE _____



CERTIFICATION:
 I HEREBY CERTIFY THAT THIS MAP, PLAT, OR SURVEY WAS MADE BY
 ME OR UNDER MY DIRECT PERSONAL SUPERVISION AND THAT I AM A
 DULY REGISTERED LAND SURVEYOR UNDER THE LAWS OF THE STATE
 OF IOWA.
Thomas V. Craft DATE: **07/05/91**
 THOMAS V. CRAFT REG. L.S. NO. 7549

MCN/214150



INDEXING ALTERNATIVES			
CORNER	SECTION	TWP	RANGE
SE COR	SW1/4	SW1/4	03-96-12
SW COR	SE1/4	SW1/4	03-96-12
NW COR	NE1/4	NW1/4	10-96-12