

UNITED STATES PUBLIC LAND SURVEY CORNER CERTIFICATE

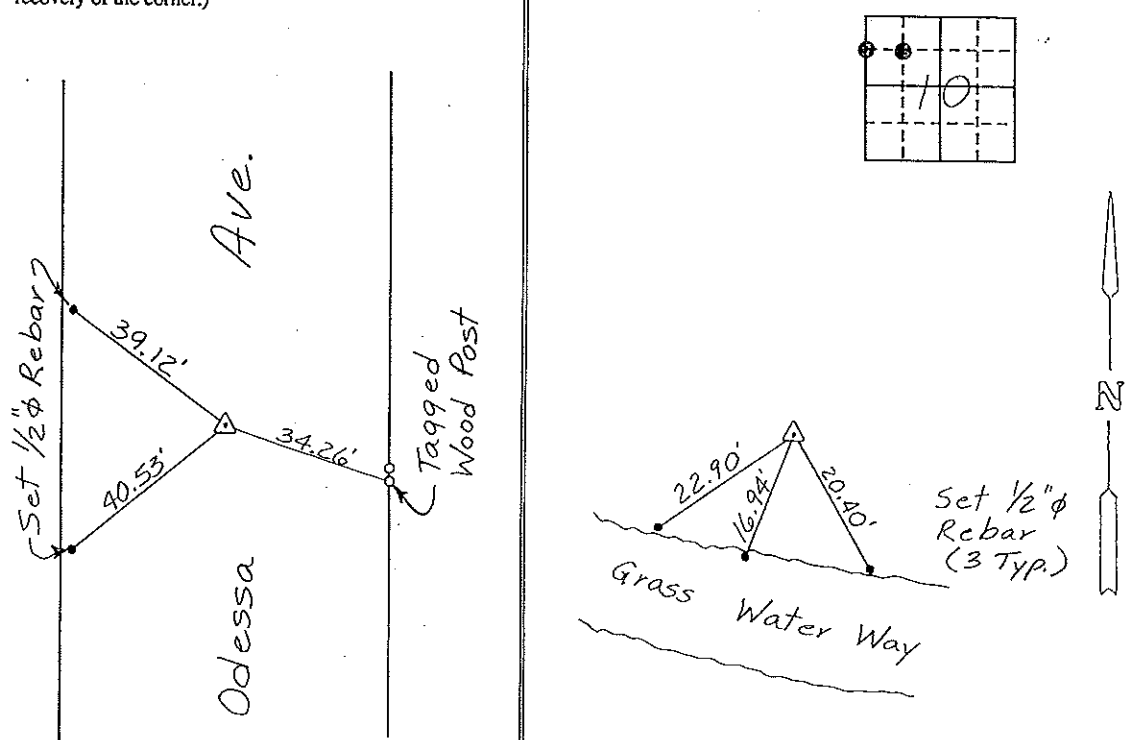
OF

Land Survey Monuments situated in Section 10, Township 96 NORTH, Range 12 WEST, of the Fifth Principal Meridian, CHICKASAW County, Iowa. Previously recorded in NONE in County Recorder's Office.

(Show reason for preparing this certificate, the evidence and detailed procedures used in establishing the corner positions and monumentation found or placed.)
Monument Description and Remarks: SW Cor., NW 1/4-NW 1/4, SECTION 10-T96N-R12W:
Set 1/2" Rebar w/cap @ Midpoint between W 1/4 Cor. & NW Cor.
SE Cor., NW 1/4-NW 1/4, Section 10-T96N-R12W: Set 1/2" Rebar w/cap @ intersections of 1/4-1/4 Section Lines.

PLAN - VIEW

(Show a minimum of three reference ties to durable physical objects, relevant monuments and physical conditions that will enable recovery of the corner.)



SW Corner Cor. C1 SE Corner Cor. X
NW 1/4-NW 1/4, Section 10-T96N-R12W NW 1/4-NW 1/4, Section 10-T96N-R12W

I hereby certify that the survey work was completed and this certificate was prepared by me or under my direct personal supervision and that I am a duly registered land surveyor under the laws of the state of Iowa.

Signature: Gary L. Casady
Name typed or printed: Gary L. Casady
Date: 1-20-94 Reg. No. 12532
My Registration Expires December 31, 1994

List Corners to be Indexed

Corners	Section	Twp	Range
SW Cor.			
NW 1/4-NW 1/4	10	96N	12W
	6-1	96-12	
SE Cor.			
NW 1/4-NW 1/4	10	96N	12W
Cor X		10-96-12	



SEAL

Placed in the Book
2/3/94