

2006-1070
5/19/2006

Section 11-96-12
As referred to in
Engr. Tie Book

TeKIPPE ENGINEERING, P.C., 128 South Vine Street, West Union, Iowa 52176 Phone (563) 422-5131

UNITED STATES PUBLIC LAND SURVEY CORNER CERTIFICATE

OF 12
Land Survey Monuments situated in Section 12, Township 96 North, Range 12 West of the Fifth Principal Meridian, CHICKASAW County, Iowa.
Previously recorded in none in County Recorder's Office.
(book, page, document number, etc.)

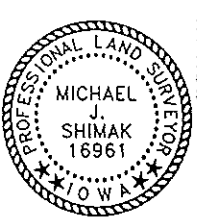
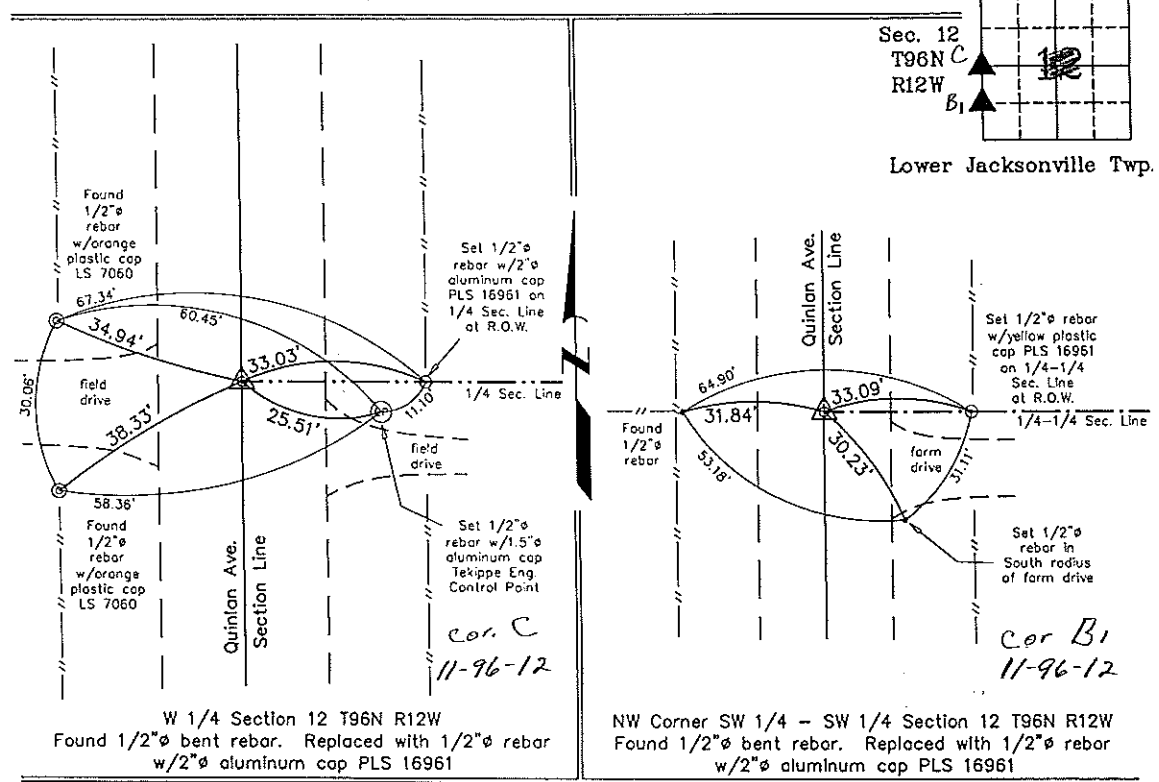
(Show reason for preparing this certificate, the evidence and detailed procedures used in establishing the corner positions and monumentation found or placed.)

Monument Description and Remarks: W 1/4 CORNER SECTION 12 T96N R12W: Found 1/2" bent rebar. Replaced with 1/2" bent rebar w/2" aluminum cap PLS 16961.
NW CORNER SW 1/4 - SW 1/4 SECTION 12 T96N R12W: Found 1/2" bent rebar. Replaced with 1/2" bent rebar w/2" aluminum cap PLS 16961.

NOTE: Both Corners were found using information from a Survey and Plat made by Lyle G. TeKippe recorded in the Chickasaw County Recorder's Office December 1, 1989 in Deeds Book 144, Pages 17-18.

PLAN - VIEW

(Show a minimum of three reference ties to durable physical objects, relevant monuments and physical conditions that will enable recovery of the corner.)



I hereby certify that this land surveying document was prepared and the related survey work was performed by me or under my direct personal supervision and that I am a duly licensed Land Surveyor under the laws of the State of Iowa.
Michael J. Shimak May 16, 2006
Michael J. Shimak Date
License number 16961
My license renewal date is December 31, 2007.
Sheets covered by this seal: Individual

List Corners to be Indexed			
Corners	Section	Twp.	Range
W 1/4	12	96N	12W
NW-SW-SW	12	96N	12W

Project Number 06137.LS
FB 46W PG. 16-21
X:\Section Corners\Sec. 12\12-96-12kp.dwg