

Section 2-96-12
As referred to in
Engr. Tie Book

TEKIPPE ENGINEERING, P.C., 128 South Vine Street, West Union, Iowa 52176 Phone (319) 422-6131

UNITED STATES PUBLIC LAND SURVEY CORNER CERTIFICATE

OF

Land Survey Monuments situated in Section # 2, Township 96 North, Range 12 West, of the Fifth Principal Meridian, CHICKASAW County, Iowa. Previously recorded in BOOK 149, PAGE 32 in County Recorder's Office.

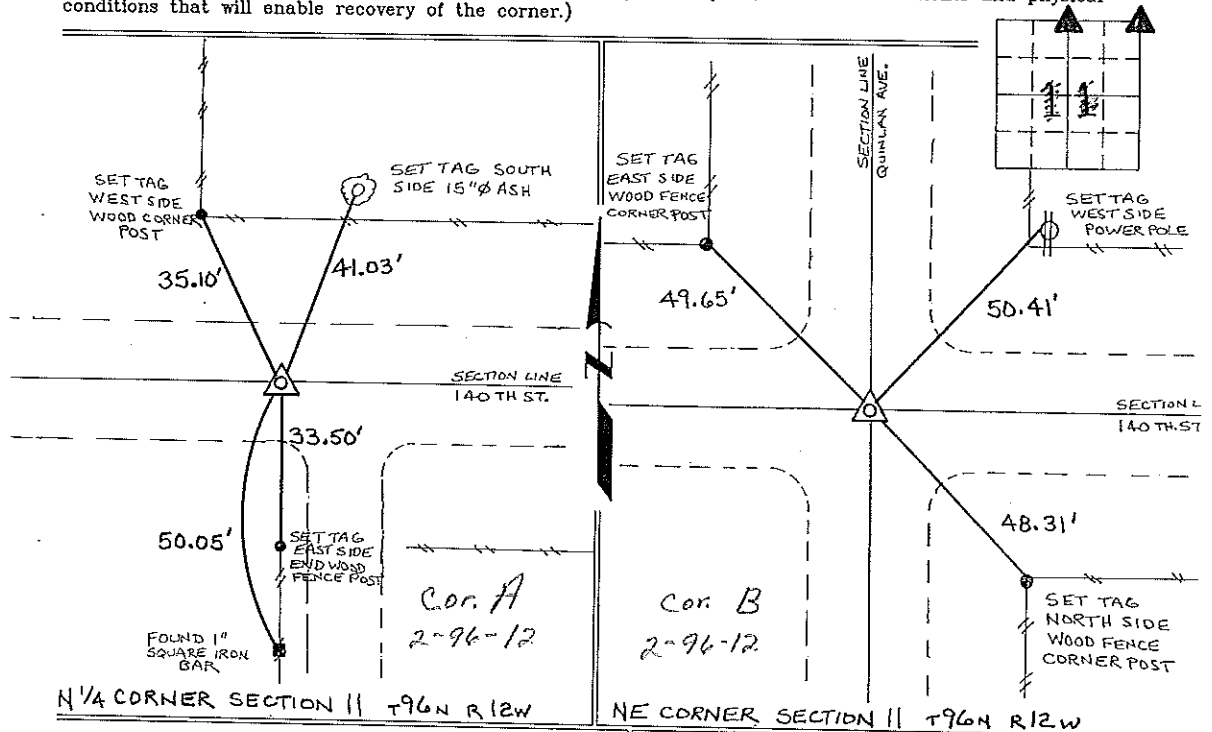
(Show reason for preparing this certificate, the evidence and detailed procedures used in establishing the corner positions and monumentation found or placed.)

Monument Description and Remarks: N 1/4 CORNER SECTION 11 T96N R12W: FOUND 1" SQUARE IRON BAR 18" DEEP - RAISED w/ 1/2" Ø REBAR w/CAP 7060, ORIGINAL TIES GONE.

NE CORNER SECTION 11 T96N R12W: FOUND 1/2" Ø REBAR, ORIGINAL TIES GONE.

PLAN - VIEW

(Show a minimum of three reference ties to durable physical objects, relevant monuments and physical conditions that will enable recovery of the corner.)



I hereby certify that the survey work was completed and this certificate was prepared by me or under my direct personal supervision and that I am a duly registered land surveyor under the laws of the state of Iowa.

Signature: Lyle G. Tekippe
Lyle G. Tekippe

Date: 5-24-96 Reg. No. 7060
My Registration Renewal Date is December 31, 1996

Seal



List Corners to be Indexed			
Corners	Section	Twp.	Range
N 1/4	11	96N	12W
	Corner A	2-96-12	
NE	11	96N	12W

Corner B 2-96-12

Placed in tie book
6/18/96

UNITED STATES PUBLIC LAND SURVEY CORNER CERTIFICATE

OF

Land Survey Monuments situated in Section H 2, Township 96, Range 12W, of the Fifth Principal Meridian, Chickasaw County, Iowa. Previously recorded in _____ in County Recorder's Office.

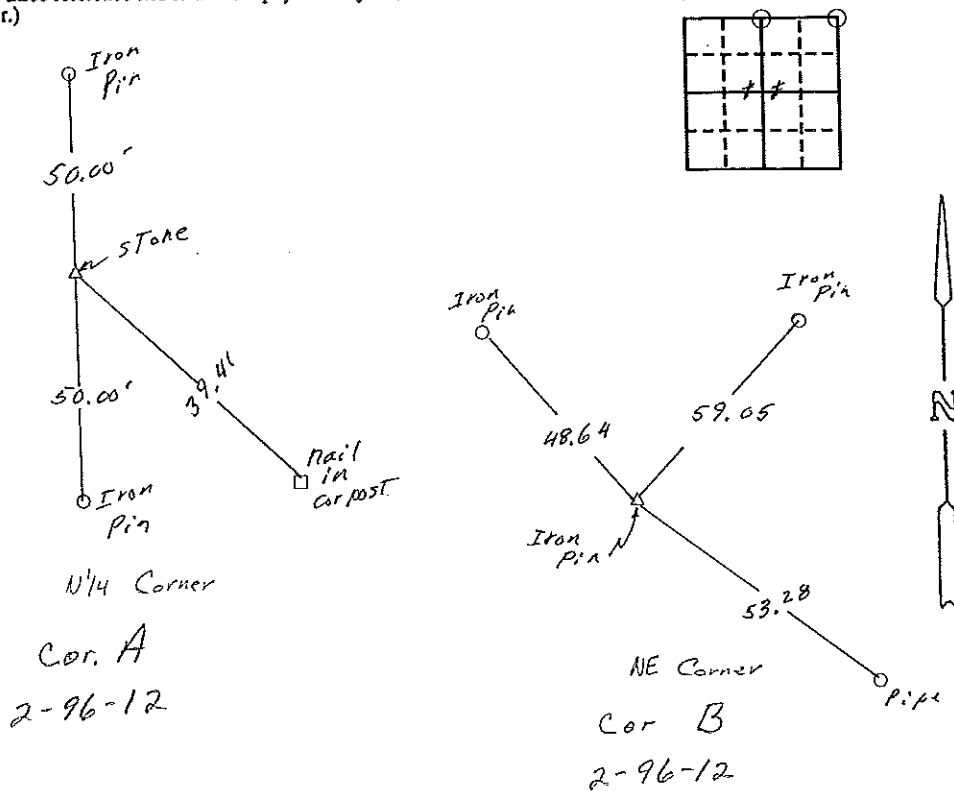
Section 2-96-12
As referred to in
Engr Tit Book

(Show reason for preparing this certificate, the evidence and detailed procedures used in establishing the corner positions and monumentation found or placed.)

Monument Description and Remarks: N 1/4 cor Stone 1' deep
NE cor Iron pin 6" deep

PLAN - VIEW

(Show a minimum of three reference ties to durable physical objects, relevant monuments and physical conditions that will enable recovery of the corner.)



I hereby certify that the survey work was completed and this certificate was prepared by me or under my direct personal supervision and that I am a duly registered land surveyor under the laws of the state of Iowa.

Signature: Robert L. Haylock
Name typed or printed: Robert L. Haylock
Date: 3-7-92 Reg. No. 5680

Corners	List Corners to be Indexed Section	Twp	Range
N 1/4	11	96	12
NE cor	11	96	12

Placed in the Books

SEAL