

TeKIPPE ENGINEERING, P.C., 128 South Vine Street, West Union, Iowa 52175 Phone (563) 422-5131

UNITED STATES PUBLIC LAND SURVEY CORNER CERTIFICATE

OF

Land Survey Monuments situated in Section 12, Township 96 North, Range 12 West of the Fifth Principal Meridian, CHICKASAW County, Iowa. Previously recorded in none in County Recorder's Office. (book, page, document number, etc.)

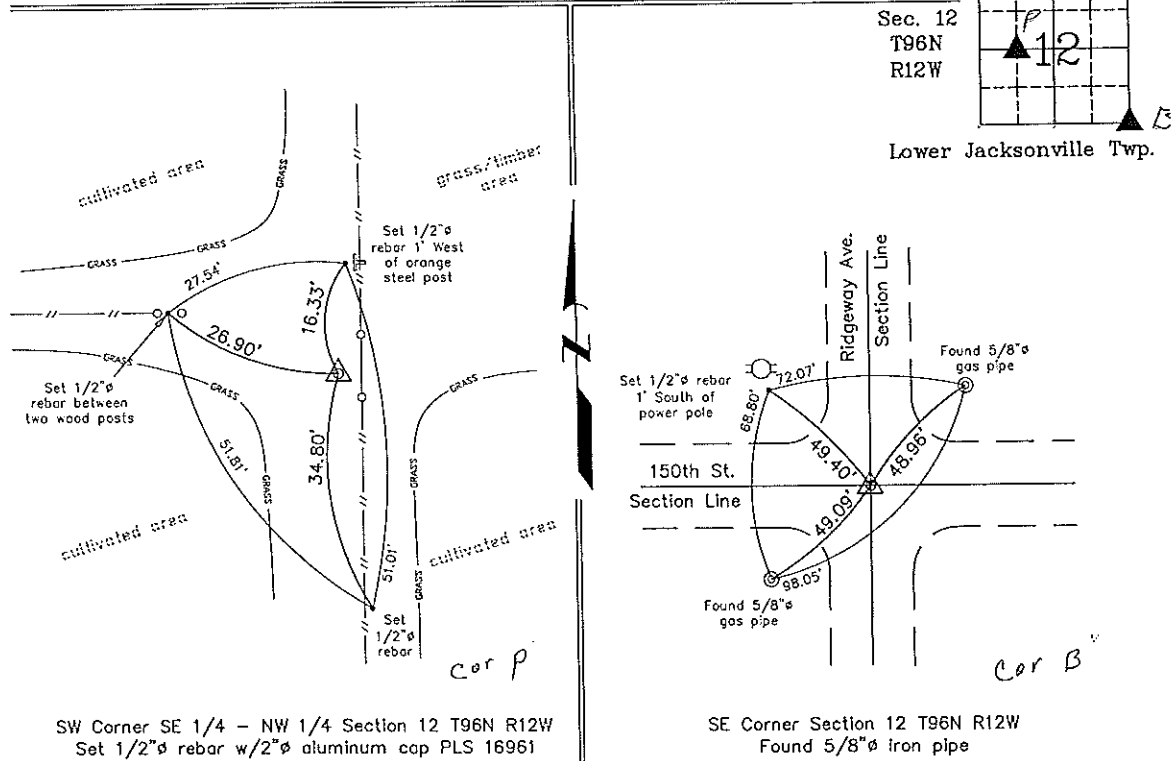
(Show reason for preparing this certificate, the evidence and detailed procedures used in establishing the corner positions and monumentation found or placed.)

Monument Description and Remarks: SW CORNER SE 1/4 - NW 1/4 SECTION 12 T96N R12W: Set 1/2"Ø rebar w/2"Ø aluminum cap PLS 16961 equidistant and on line between the W 1/4 Corner and the calculated Center of the Section.

SE CORNER SECTION 12 T96N R12W: Found 5/8"Ø iron pipe using information from the Chickasaw County Engineer's Office in Field Book Jacksonville Twp. Corner Ties, Section 12, Corner 'B'.

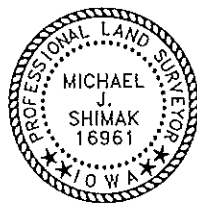
PLAN - VIEW

(Show a minimum of three reference ties to durable physical objects, relevant monuments and physical conditions that will enable recovery of the corner.)



SW Corner SE 1/4 - NW 1/4 Section 12 T96N R12W  
 Set 1/2"Ø rebar w/2"Ø aluminum cap PLS 16961

SE Corner Section 12 T96N R12W  
 Found 5/8"Ø iron pipe



I hereby certify that this land surveying document was prepared and the related survey work was performed by me or under my direct personal supervision and that I am a duly licensed Land Surveyor under the laws of the State of Iowa.  
*Michael J. Shimak* May 16, 2006  
 Michael J. Shimak Date  
 License number 16961  
 My license renewal date is December 31, 2007.  
 Sheets covered by this seal: Individual

List Corners to be Indexed			
Corners	Section	Twp.	Range
SW-SE-NW	12	96N	12W
SE	12	96N	12W