

UNITED STATES PUBLIC LAND SURVEY CORNER CERTIFICATE

Land Survey Monuments situated in Section 12, Township 96 North, Range 12 West, of the Fifth Principal Meridian, Chickasaw County, Iowa.

Previously recorded in N/A in County Recorder's Office.
 (book, page, document number, etc.)

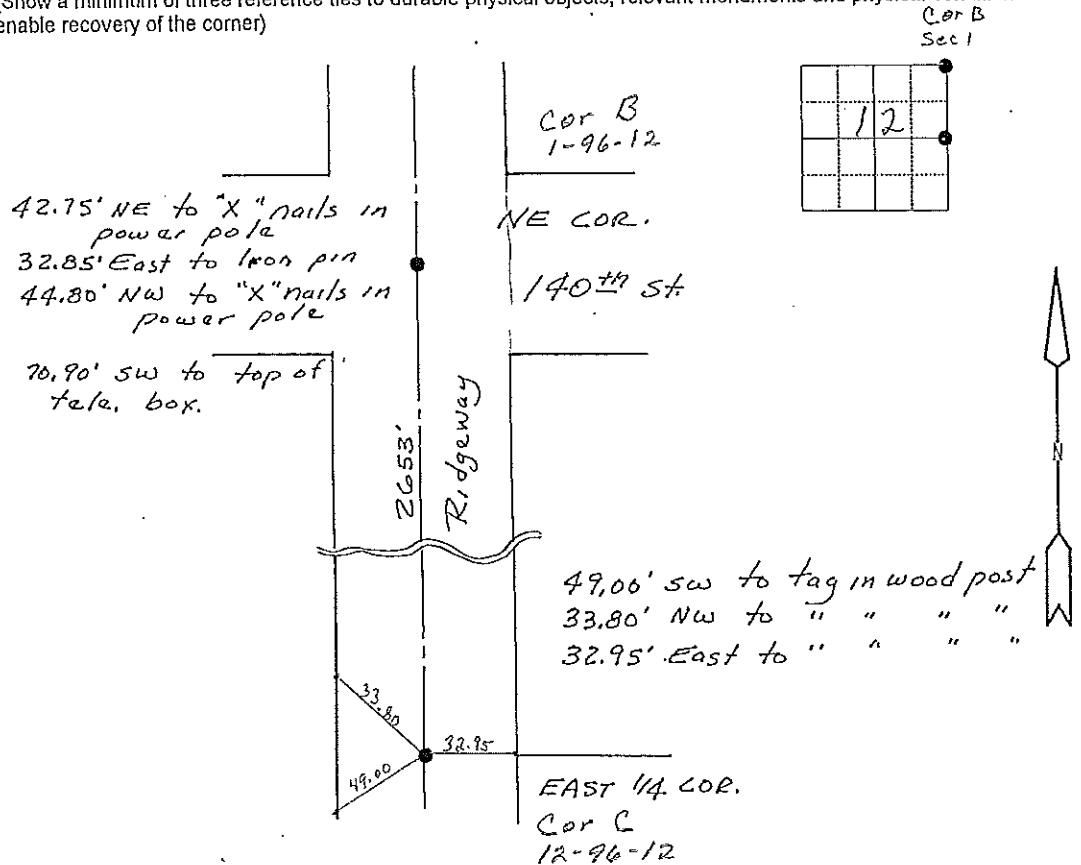
(Show reason for preparing this certificate, the evidence and detailed procedures used in establishing the corner positions and monumentation found or placed.)

Monument Description and Remarks: Found 1/2" pipe at NE corner of section. Fit existing ties found. Found short iron pin bent and on top of 1/2" rebar at East 1/4 cor. Replaced iron pin with 8" long 1/2" rebar set on top of rebar found.

Section 1-96-12
 As referred to in
 Engr. Tie Book

PLAN - VIEW

(Show a minimum of three reference ties to durable physical objects, relevant monuments and physical conditions that will enable recovery of the corner)



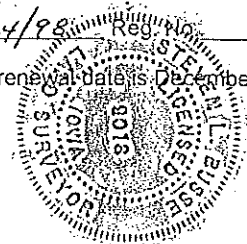
I hereby certify that the survey work was completed and this land surveying document was prepared by me or under my direct personal supervision and that I am a duly licensed land surveyor under the laws of the state of Iowa

Signature: Steve Busse
 Name typed or printed: STEVE BUSSE

Date: 8/24/98 Reg. No. 9018

My license renewal date is December 31, 1998

SEAL



| Corners | List Corners to be Indexed | | |
|---------------|----------------------------|-----|-------|
| | Section | Twp | Range |
| East 1/4 COR. | 12 | 96 | 12 |
| NE COR. | 12 | 96 | 12 |