

2006-1068  
5-19-2006

Section 1-96-12  
As referred to in  
Engr. Tie Book

TeKIPPE ENGINEERING, P.C., 128 South Vine Street, West Union, Iowa 52175 Phone (563) 422-5131

UNITED STATES PUBLIC LAND SURVEY CORNER CERTIFICATE

OF  
Land Survey Monuments situated in Section 12, Township 96 North, Range 12 West of the Fifth Principal Meridian, CHICKASAW County, Iowa.  
Previously recorded in none in County Recorder's Office.  
(book, page, document number, etc.)

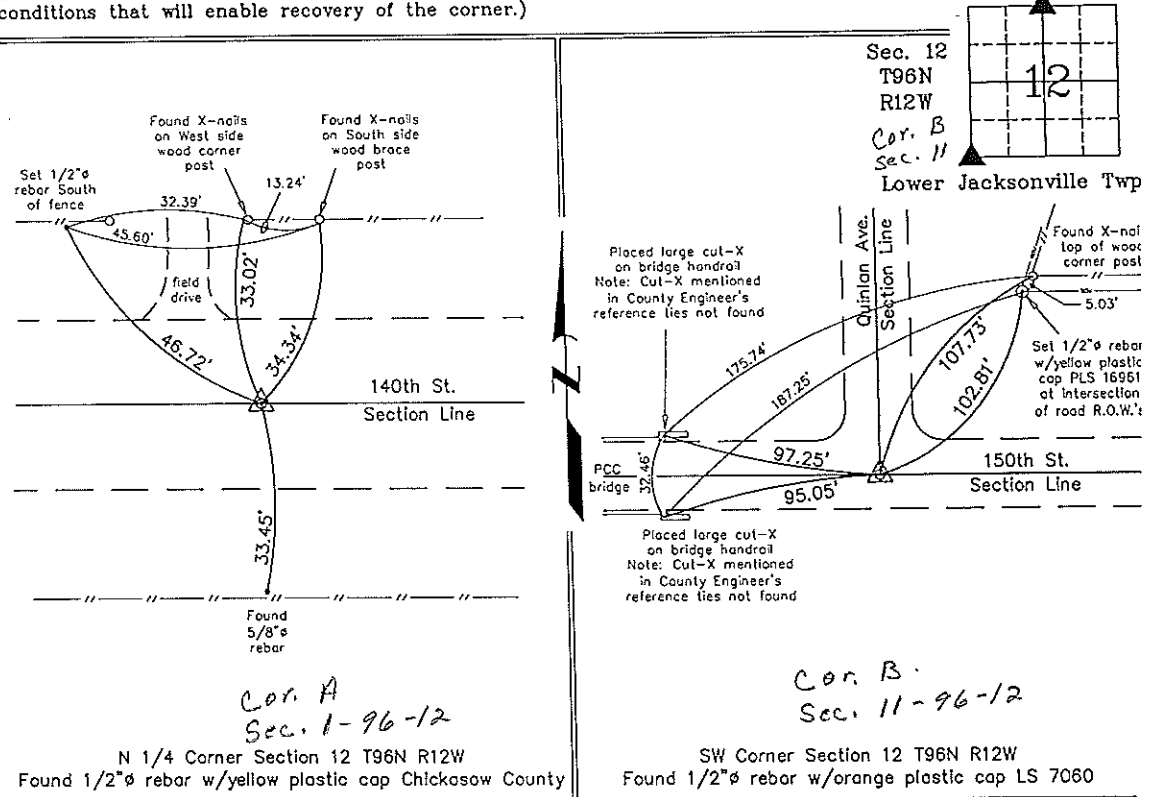
(Show reason for preparing this certificate, the evidence and detailed procedures used in establishing the corner positions and monumentation found or placed.)

Monument Description and Remarks: N 1/4 CORNER SECTION 12 T96N R12W: Found 1/2"Ø rebar w/yellow plastic cap Chickasaw County using information from the Chickasaw County Engineer's Office in Field Book Jacksonville Twp. Corner Ties, Section 1, Corner 'A'.

SW CORNER SECTION 12 T96N R12W: Found 1/2"Ø rebar w/orange plastic cap LS 7060 with information from a Survey and Plat made by Lyle G. TeKippe recorded in the Chickasaw County Recorder's Office December 1, 1989 in Deeds Book 144, Pages 17-18.

PLAN - VIEW

(Show a minimum of three reference ties to durable physical objects, relevant monuments and physical conditions that will enable recovery of the corner.)



I hereby certify that this land surveying document was prepared and the related survey work was performed by me or under my direct personal supervision and that I am a duly licensed Land Surveyor under the laws of the State of Iowa.

*Michael J. Shimak* May 16 2006  
Michael J. Shimak Date  
License number 16961  
My license renewal date is December 31, 2007.  
Sheets covered by this seal: Individual

List Corners to be Indexed			
Corners	Section	Twp.	Range
N 1/4	12	96N	12W
SW	12	96N	12W

Project Number 06137.1S  
FB. 46M PG. 15-21  
X:\Section Corners\Sec. 12\12-96-12cu.dwg