

Instrument #: 2020-2434
 10/26/2020 04:03:48 PM Total Pages: 1
 SCC SECTION CORNER CERTIFICATES
 Recording Fee: \$ 7.00
 Shirley Troyna, Recorder, Chickasaw County Iowa



Prepared by & Return to Herold - Reicks Surveying, 10 East Main Street, New Hampton, IA 50659, Ph. 641-394-2725

United States Public Land Survey Corner Certificate

Land Survey Monument situated in
 Section 14, Township 96 North, Range 12 West of the Fifth Principal Meridian, Chickasaw County, Iowa.
 On file in **Book 162, Page 58** in the County Recorder's office.

This certificate is being prepared in compliance with Iowa Code Chapter 355.11 because:

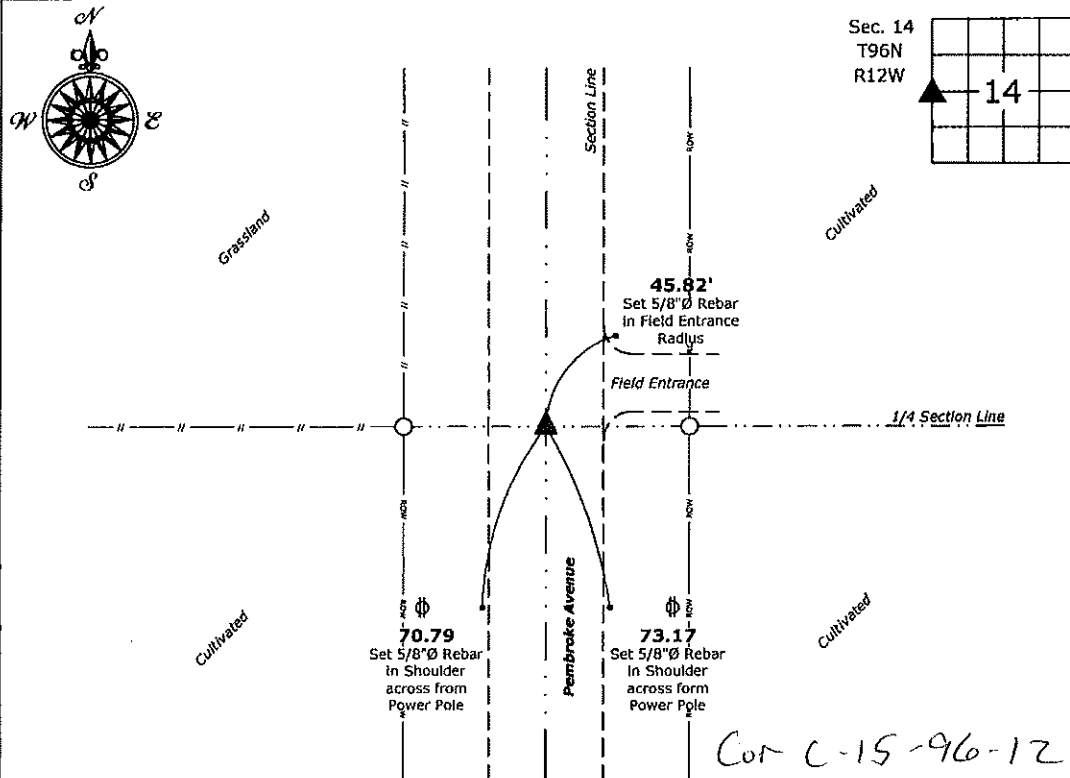
- There is no certificate on file for this corner.
- There are no longer three valid ties of record.
- There are changes to reference ties of record.
- There is change of monumentation of record.
- To clarify description of record monument (ties).

Monument Description and Remarks:

West 1/4 Corner: Found 1/2"Ø Rebar with information obtained from the previously recorded Section Corner Certificate.

Plan View

(Show a minimum of three reference ties to durable physical objects, relevant monuments and physical conditions that will enable recovery of the corner.)



West 1/4 Corner of Section 14-96-12
 Fd. 1/2"Ø Rebar



I hereby certify that this land surveying document was prepared and the related survey work was performed by me or under my direct personal supervision and that I am a duly licensed Land Surveyor under the laws of the State of Iowa.
Kirk D. Reicks 10-20-2020
 Kirk D. Reicks Date:
 License number 19211
 My license renewal date is December 31, 2020.
 Sheets covered by this seal: Individual sheet only

List Corner to be Indexed			
Corner	Section	Twp.	Range
W 1/4	14	96	12
Project Number: 2020-110			
FB: Chickasaw 10, Pgs. 35-37			

File: S:_ Projects - NHO\County Control Systems - NHO\CHICKASAW\CHICK-14\CHICK-14 - 2020.dwg, 10/22/2020 7:17:58 AM

DOCUMENT No. **00583** FILED FOR RECORD THE 13th DAY OF September, 1996 AT 9:04 P.M. Heather M. Goss Recorder
 RECORDING FEE \$ 6.00 O'CLOCK A.M. BOOK 162 Deeds PAGE 58 Chorin A. Gulligan Deputy

Prepared by: Erdman Engineering P.C. 708 Commerce Drive, P.O. Box 246, Decorah Iowa, 52101
 Phone (319)382-4194, Fax (319)382-3623

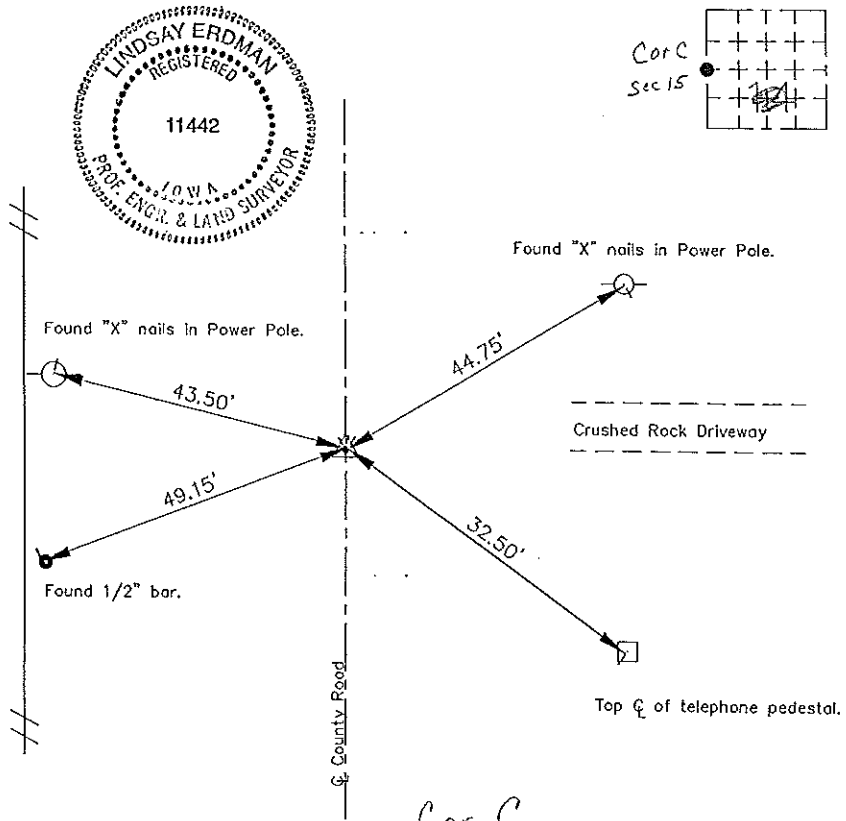
United States Public Land Survey Corner Certificate

Land Survey Monuments situated in Section, ¹⁵~~14~~ Township, 96 Range, 12 of the Fifth Principle Meridian,
 Chickasaw County, Iowa. Previously recorded in does not apply in County Recorders Office.

(Show reason for preparing this certificate, the evidence and detailed procedures used in establishing the corner positions and monumentation found or placed.)

Monument Description and Remarks: This certificate is prepared in accordance with Section 355.11
 of the 1995 Code of Iowa. No previous certificate has been filed for this corner location. Based on
 County Engineer's Reference Ties we found a 1" bar, two sets of "X" nails one 1/2" bar all used as
 the markers. From these ties we found a 1/2" bar at the surface of the crushed rock surface at the
 W 1/4 corner of Sec. 14-96-12.

Plan-View
 (Show a minimum of three reference ties to durable physical objects, relevant
 monuments and physical conditions that will enable recovery of the corner.)



Cor C
15-96-12

I hereby certify that the survey work was completed and this certificate was prepared by me or under my direct supervision and that I am a duly registered land surveyor under the laws of the State of Iowa.

Signature Lindsay Erdman
Lindsay Erdman, P.E. and L.S.

Date: 9/6/96 Reg. No. 11442

My license will be renewed January 1, 1997

Corners	Section	Twp.	Range
W 1/4	14	96	12