

Instrument #: 2022-1878  
 10/14/2022 03:34:21 PM Total Pages: 1  
 SCC SECTION CORNER CERTIFICATES  
 Recording Fee: \$ 7.00  
 Shirley Troyna, Recorder, Chickasaw County Iowa



Prepared by: Kyle A. Johnson Address: 1900 MEDICAL ARTS AVE S. SUITE 100 SARTELL, MN Phone: 1-888-937-5150

UNITED STATES PUBLIC LAND SURVEY CORNER CERTIFICATE FOR

Land survey monuments situated in Section 16, Township 96 NORTH  
12 WEST, of the Fifth Principal Meridian, CHICKASAW County, Iowa.

Previously Recorded in \_\_\_\_\_ in County Recorder's Office.

(Show reason for preparing this certificate, the evidence and detailed procedures used in establishing the corner positions and monumentation found or placed.)

MONUMENT DESCRIPTION AND REMARKS:

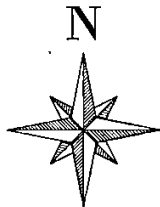
**EAST QUARTER:** Westwood Professional Services found a 1/2" rebar 0.2' deep and 2 ties of previous record. Record distances to adjacent corners also agree with monument location. Accepting corner location and set 1 tie. filing corner record as there are no longer 3 valid ties of record.

**SOUTH QUARTER:** Westwood Professional Services found a 1/2" rebar 0.5' deep equidistant and near centerline. Accepting corner location and set 3 ties. Filing corner record as there is no certificate on file for this corner.

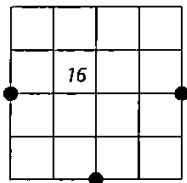
**WEST QUARTER:** Westwood Professional Services searched the area for stone called for in Chickasaw County engineer records and did not recover a monument. There is an old concrete post fence running north and south, which a 6-1/2"x7-1/2" concrete post that agrees with fence occupation to the west. All other concrete post north and south of this post are a smaller, less substantial post. This post lands on line with a fence line to the west and agrees with record GLO distances north and south. Did not recover any additional reliable evidence of the corner location. Holding the 6-1/2"x7-1/2" concrete post as the best available evidence of the corner position. Set a 1/2" rebar with orange LS 25725 cap on east side of post. Filing due to no previous official record.

PLAN - VIEW

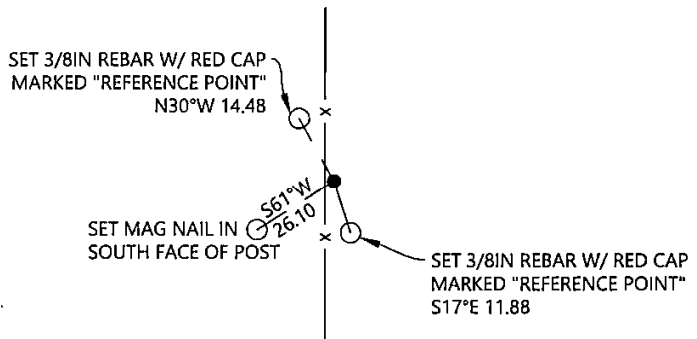
(Show a minimum of three reference ties to durable physical objects, relevant monuments and physical conditions that will enable recovery of the corner.)



N.T.S.

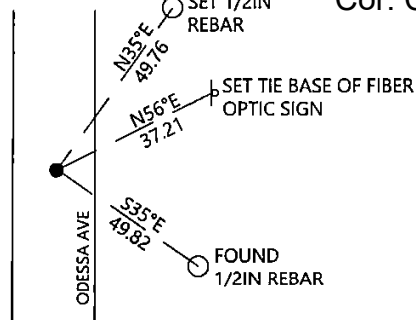
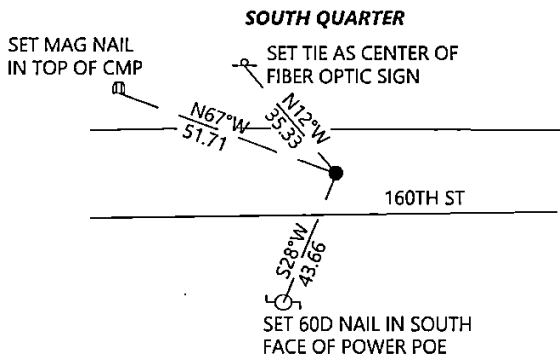


WEST QUARTER

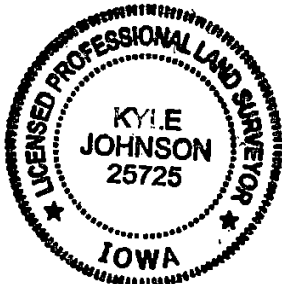


EAST QUARTER

Cor. C 16-96-12



SEAL



I hereby certify that this land surveying document was prepared and the related survey work was performed by me or under my direct personal supervision and that I am a duly licensed Land Surveyor under the laws of the state of Iowa.

Signature: Kyle Johnson Date: 10/14/2022

Typed/Printed Name: Kyle A. Johnson

License Number: 25725

My license renewal date is December 31, 2022

Pages or sheets covered by this seal: THIS SHEET

Corners to be Indexed

Corners	Section	Twp.	Range
EQ	16	96	12
SQ	16	96	12
WQ	16	96	12