

TeKIPPE ENGINEERING, P.C., 128 South Vine Street, West Union, Iowa 52175 Phone (563) 422-5131

UNITED STATES PUBLIC LAND SURVEY CORNER CERTIFICATE

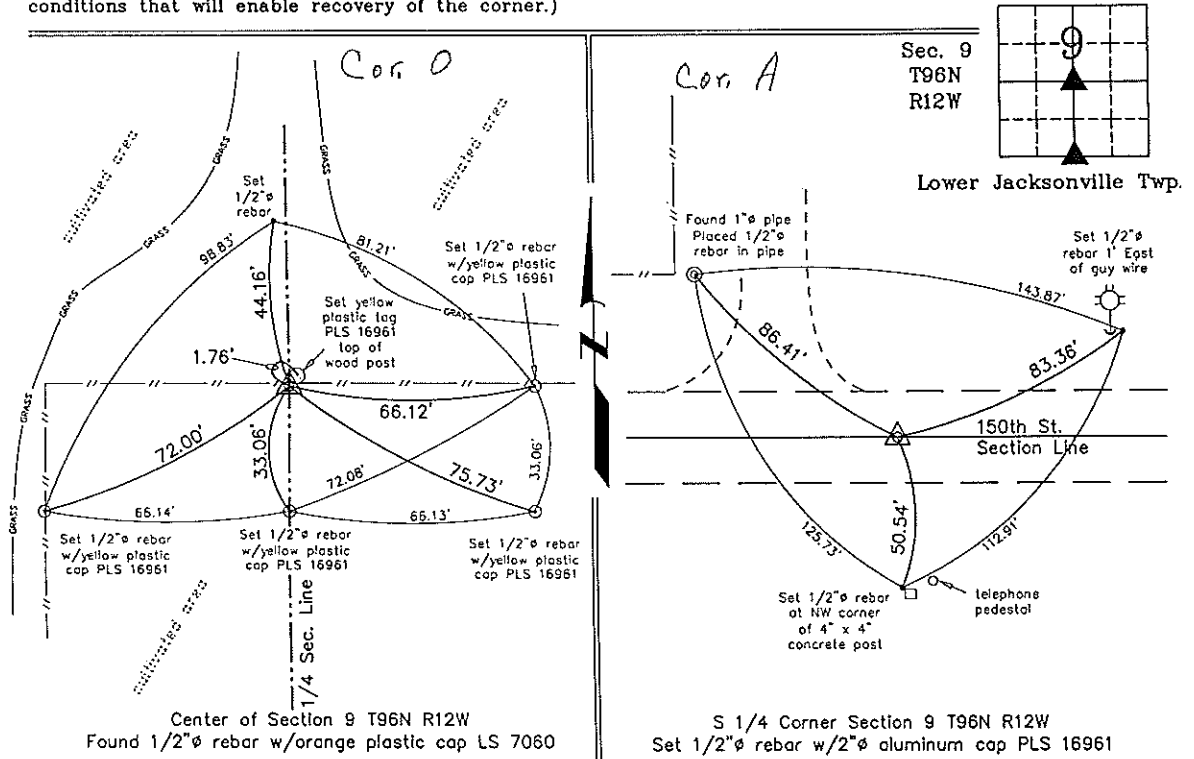
OF  
 Land Survey Monuments situated in Section 9, Township 96 North, Range  
12 West of the Fifth Principal Meridian, CHICKASAW County, Iowa.  
 Previously recorded in none in County Recorder's Office.  
 (book, page, document number, etc.)

(Show reason for preparing this certificate, the evidence and detailed procedures used in establishing the corner positions and monumentation found or placed.)

Monument Description and Remarks: CENTER OF SECTION 9 T96N R12W: Found 1/2"Ø rebar w/orange plastic cap LS 7060 using information obtained from a Survey and Plat made by Lyle G. TeKippe recorded in the Chickasaw County Recorder's Office April 19, 1988 in Book 140, Pages 330-331. S 1/4 CORNER SECTION 9 T96N R12W: Found nail using information obtained from above mentioned Survey and Plat. Said nail was laying sideways, 0.1'± West of a position found by doubling a line from the SW Corner to and across the SE Corner SW 1/4 - SW 1/4. Removed found nail and set 1/2"Ø rebar w/2"Ø aluminum cap PLS 16961 at doubled position.

PLAN - VIEW

(Show a minimum of three reference ties to durable physical objects, relevant monuments and physical conditions that will enable recovery of the corner.)



I hereby certify that this land surveying document was prepared and the related survey work was performed by me or under my direct personal supervision and that I am a duly licensed Land Surveyor under the laws of the State of Iowa.  
*Michael J. Shimak* April 21, 2006  
 Michael J. Shimak Date  
 License number 16961  
 My license renewal date is December 31, 2007.  
 Sheets covered by this seal: Individual

List Corners to be Indexed			
Corners	Section	Twp.	Range
Center	9	96N	12W
S 1/4	9	96N	12w

Project Number 08115.LS  
 PB 46M PG. 3-7  
 X:\Section Corners\Sec. 0919-96-12mw.dwg