

Fee #1600
2001 DEC 20 AM 9 39

PREPARED BY TERRY D. VAN LANINGHAM, PLS, INC. * 120 2ND STREET, SW.,
Waverly, Iowa 319-352-0801

GINDY MESSERSMITH
COUNTY RECORDER

UNITED STATES PUBLIC LAND SURVEY CORNER CERTIFICATE

OF 159

Land Survey Monuments situated in Section 15, Township 96 N, Range 12 W,
of the Fifth Principal Meridian, CHICKASAW County, Iowa. Previously recorded
in _____ in County Recorder's Office.

(book, page, document number, etc.)

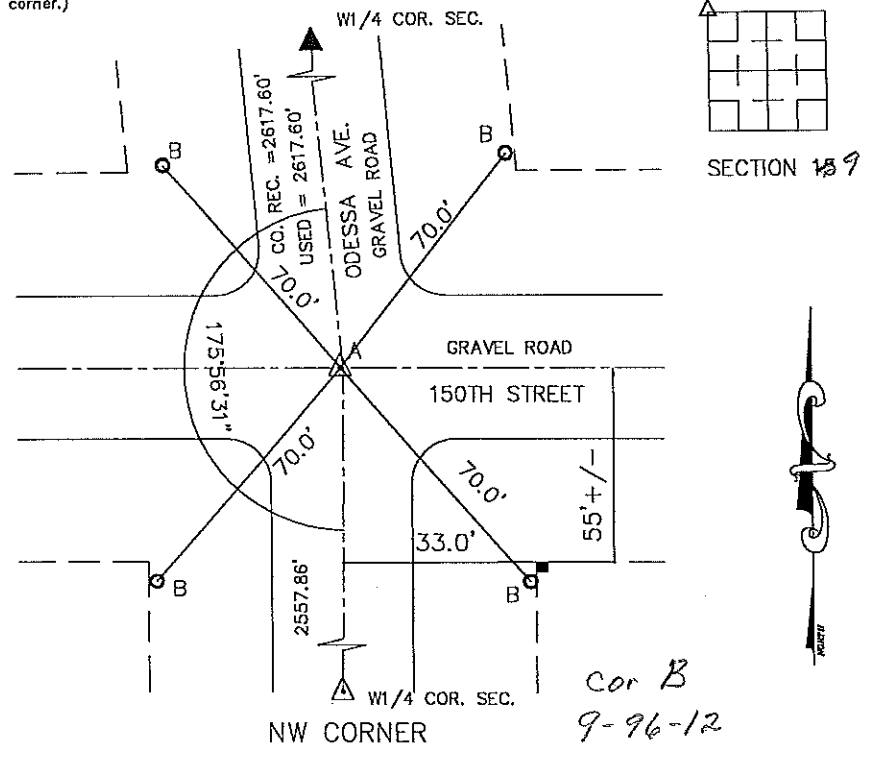
(Show reason for preparing this certificate, the evidence and detailed procedures used in establishing the corner positions and monumentation found or placed.)

Monument Description and Remarks:

- A - COULD NOT FIND STONE REFERED TO IN 1954 TIES - RESET REBAR w/RED CAP
BASED ON COUNTY SECTION LINE DISTANCES AND ROAD RIGHT OF WAY FENCES
- B - RESET 1/2" REBAR x 24" LONG WITHOUT CAPS AS REFERENCES

PLAN VIEW

(Show a minimum of three reference ties to durable physical objects, relevant monuments and physical conditions that will enable recovery of the corner.)



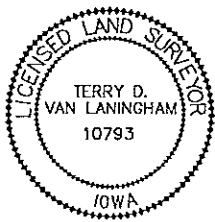
Cor B
9-96-12

I hereby certify that this land surveying document was prepared and the related survey work was performed by me or under my direct personal supervision and that I am a duly licensed Land Surveyor under the laws of the State of Iowa.

Terry D. Van Laningham Date: Dec 10, 2001
Terry D. Van Laningham, PLS
License number 10793

My registration renewal date is December 31, 2001.
Pages or sheets covered by this seal:
THIS SHEET ONLY

List Corners to be Indexed			
Corners	Section	Township	Range
NW CORNER	15	96 N	12 W



SEAL

Section 9-96-12
As referred to in
Engr. TIC Book

Filed 12-26-01