

Section 8-96-12  
As referred to in  
Engr. Tie Book

Chickasaw Co Recorder Cindy Messersmith  
 FEE BOOK 2006-0866 4/24/2006 @ 09:34AM  
 SEC SEC CCR CERT Book: Page: #: 1  
 Total Fees: \$7.00

TeKIPPE ENGINEERING, P.C., 128 South Vine Street, West Union, Iowa 52175 Phone (563) 422-5131

UNITED STATES PUBLIC LAND SURVEY CORNER CERTIFICATE

OF 8  
 Land Survey Monuments situated in Section 9, Township 96 North, Range 12 West of the Fifth Principal Meridian, CHICKASAW County, Iowa.  
 Previously recorded in none in County Recorder's Office.  
 (book, page, document number, etc.)

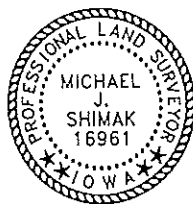
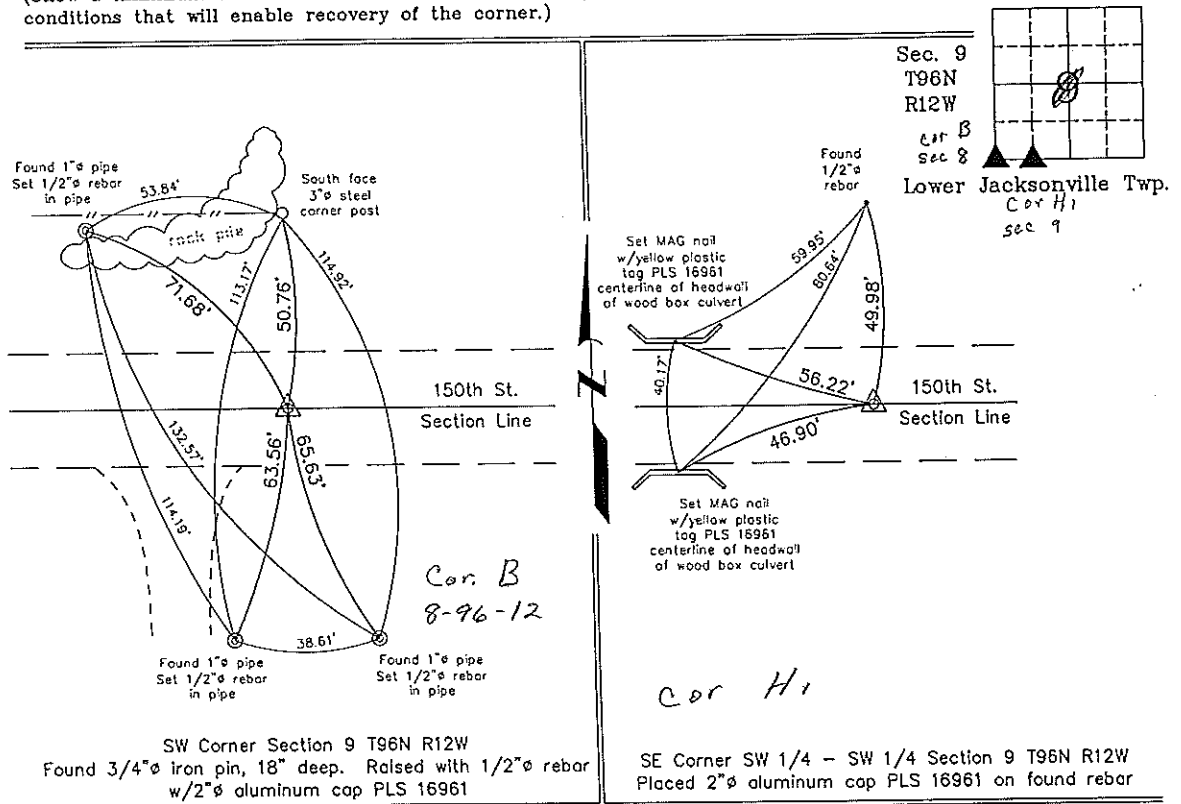
(Show reason for preparing this certificate, the evidence and detailed procedures used in establishing the corner positions and monumentation found or placed.)

Monument Description and Remarks: SW CORNER SECTION 9 T96N R12W: Found 3/4" iron pin, 18" deep. Raised with 1/2" rebar w/2" aluminum cap PLS 16961.  
 SE CORNER SW 1/4 - SW 1/4 SECTION 9 T96N R12W: Placed 2" aluminum cap PLS 16961 on found rebar.

NOTE: Both monuments were found using information from a Survey and Plat made by Lyle G. TeKippe recorded in the Chickasaw County Recorder's Office April 19, 1988 in Book 140, Pages 330-331.

PLAN - VIEW

(Show a minimum of three reference ties to durable physical objects, relevant monuments and physical conditions that will enable recovery of the corner.)



I hereby certify that this land surveying document was prepared by me or under my direct personal supervision and that I am a duly licensed Land Surveyor under the laws of the State of Iowa.

*Michael J. Shimak* April 21, 2006  
 Michael J. Shimak Date

License number 16961  
 My license renewal date is December 31, 2007.  
 Sheets covered by this seal: Individual

List Corners to be Indexed			
Corners	Section	Twp.	Range
SW	9	96N	12W
SE-SW-SW	9	96N	12W

Project Number 06115.LS  
 FB. 46M PG. 3-7  
 X:\Section Corners\Sec. 0919-96-12uv.dwg