

Instrument #: 2022-1880  
 10/14/2022 03:34:21 PM Total Pages: 1  
 SCC SECTION CORNER CERTIFICATES  
 Recording Fee: \$ 7.00  
 Shirley Troyna, Recorder, Chickasaw County Iowa



Prepared by: Kyle A. Johnson Address: 1900 MEDICAL ARTS AVE S. SUITE 100 SARTELL, MN Phone: 1-888-937-5150

UNITED STATES PUBLIC LAND SURVEY CORNER CERTIFICATE FOR

Land survey monuments situated in Section 19, Township 96 NORTH  
12 WEST, of the Fifth Principal Meridian, CHICKASAW County, Iowa.

Previously Recorded in \_\_\_\_\_ in County Recorder's Office.

(Show reason for preparing this certificate, the evidence and detailed procedures used in establishing the corner positions and monumentation found or placed.)

MONUMENT DESCRIPTION AND REMARKS:

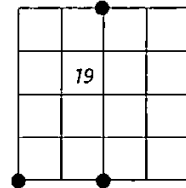
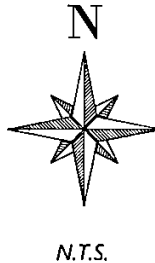
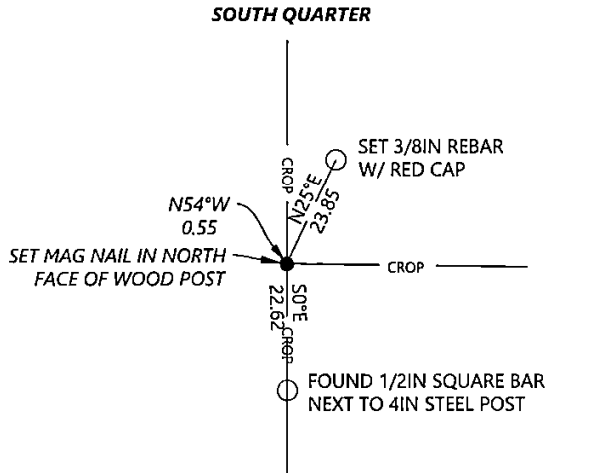
**SOUTHWEST CORNER:** Westwood Professional Services found a 1" square rod 0.2' deep and 3 ties per engineers book. Accepting corner location. Filing corner record as there is no certificate on file for this corner.

**SOUTH QUARTER:** Westwood Professional Services found a 1/2" rebar on the east side of a wood post and found 1 tie. Distances agree with previous records. Accepting corner location and set 2 ties. Filing corner record as there are no longer 3 valid ties of record.

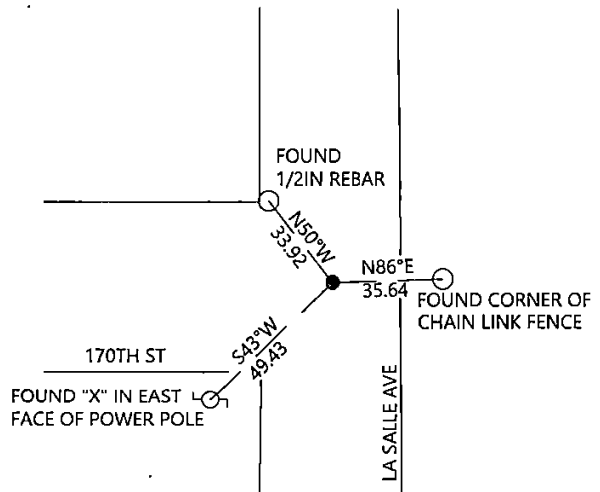
**NORTH QUARTER:** Westwood Professional Services searched and found nothing. The Chickasaw County engineer records and the 1987 Thomas V. Craft, LS7549, survey do not provide enough mathematical data to restore corner location. Hand excavated near the mid point position and near occupation intersection. The over all distance from the NE corner of Section 19 to the NW corner of Section 19 varies over 215 ft. from the GLO distance. Utilized fence line to the south to control the E/W position and the E/W gravel road centerline to control N/S. This agrees with a found monument +/-660 ft. east of here that appears to have been set 33 ft. south of the section line on the right of way. Filing due to no previous record.

PLAN - VIEW

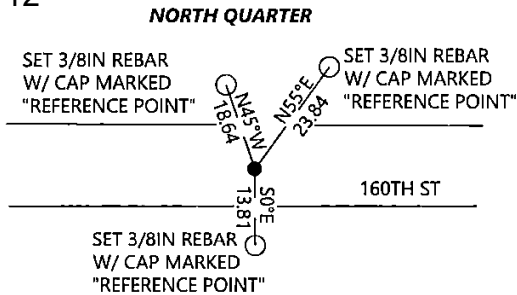
(Show a minimum of three reference ties to durable physical objects, relevant monuments and physical conditions that will enable recovery of the corner.)



SOUTHWEST CORNER:



Cor. A 18-96-12



I hereby certify that this land surveying document was prepared and the related survey work was performed by me or under my direct personal supervision and that I am a duly licensed Land Surveyor under the laws of the state of Iowa.

Signature: Kyle Johnson Date: 10/14/2022

Typed/Printed Name: Kyle A. Johnson

License Number: 25725

My license renewal date is December 31, 2022

Pages or sheets covered by this seal: THIS SHEET

Corners to be Indexed

Corners	Section	Twp.	Range
SW	19	96	12
SQ	19	96	12
NQ	19	96	12