

FILED 2001-0545

RECORDER'S OFFICE  
CHICKASAW COUNTY, IOWA

*See #600*  
2001 MAR 27 AM 8 37

CINDY MESSERSMITH  
COUNTY RECORDER

TeKIPPE ENGINEERING, P.C., 128 South Vine Street, West Union, Iowa 52175 Phone (319) 422-6181

### UNITED STATES PUBLIC LAND SURVEY CORNER CERTIFICATE

OF  
Land Survey Monuments situated in Section 19, Township 96 North, Range  
12 West of the Fifth Principal Meridian, CHICKASAW County, Iowa.  
Previously recorded in none in County Recorder's Office.  
(book, page, document number, etc.)

(Show reason for preparing this certificate, the evidence and detailed procedures used in establishing the corner positions and monumentation found or placed.)

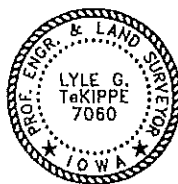
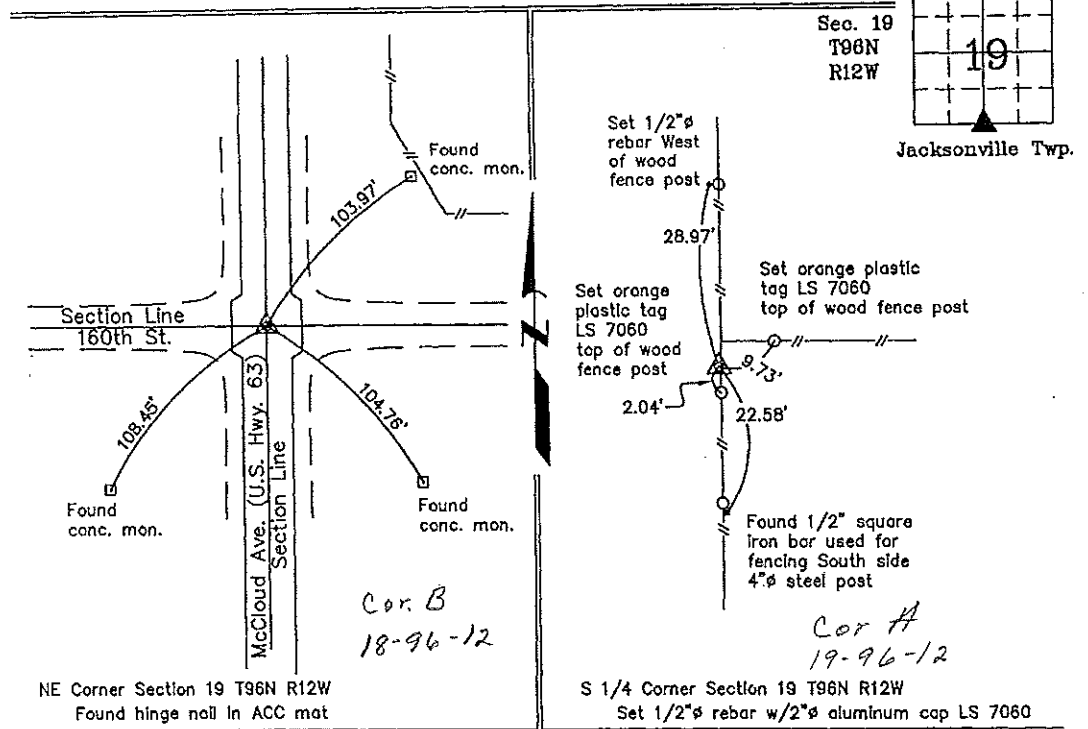
Monument Description and Remarks: NE Corner Section 19 T96N R12W: Found hinge nail in ACC mat with information obtained from the as-built plans for U. S. Highway 63 Project #FR-63-8(13)--2G-19.

S 1/4 Corner Section 19 T96N R12W: Set 1/2"Ø rebar w/2"Ø aluminum cap LS 7060 with County ties obtained from the Chickasaw County Engineer's Office in the Field Book for Jacksonville Twp. Corner Ties.

#### PLAN - VIEW

Project Number 01014.LB  
FH 461 PG. 13-18  
Cor B  
Sec 18

(Show a minimum of three reference ties to durable physical objects, relevant monuments and physical conditions that will enable recovery of the corner.)



I hereby certify that this land surveying document was prepared and the related survey work was performed by me or under my direct personal supervision and that I am a duly licensed Land Surveyor under the laws of the State of Iowa.

*Lyle G. TeKippe* 3-26-01  
Lyle G. TeKippe Date  
License number 7060  
My license renewal date is December 31, 2002.  
Sheets covered by this seal: Individual

List Corners to be Indexed			
Corners	Section	Twp.	Range
NE	19	96N	12W
S 1/4	19	96N	12W

2001-0545